

Eisenhower Expressway (I-290) Update and Discussion

- Noise Wall Update
- Conceptual Aesthetic Treatments
Discussion
- Next Steps

February 22, 2016



Village of Oak Park ~ "Eye on the Ike"



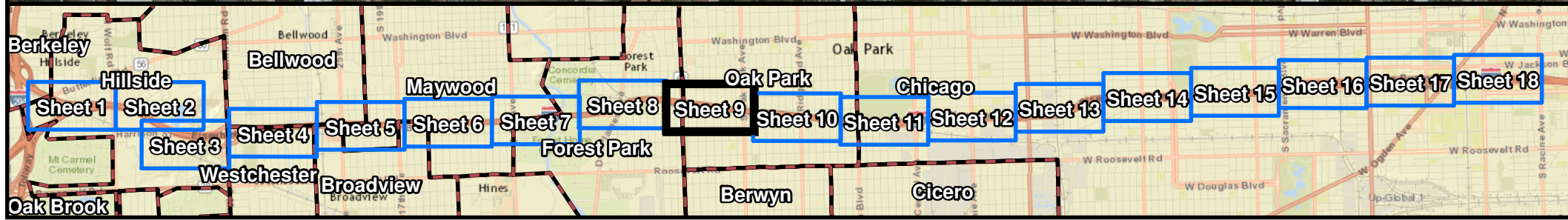
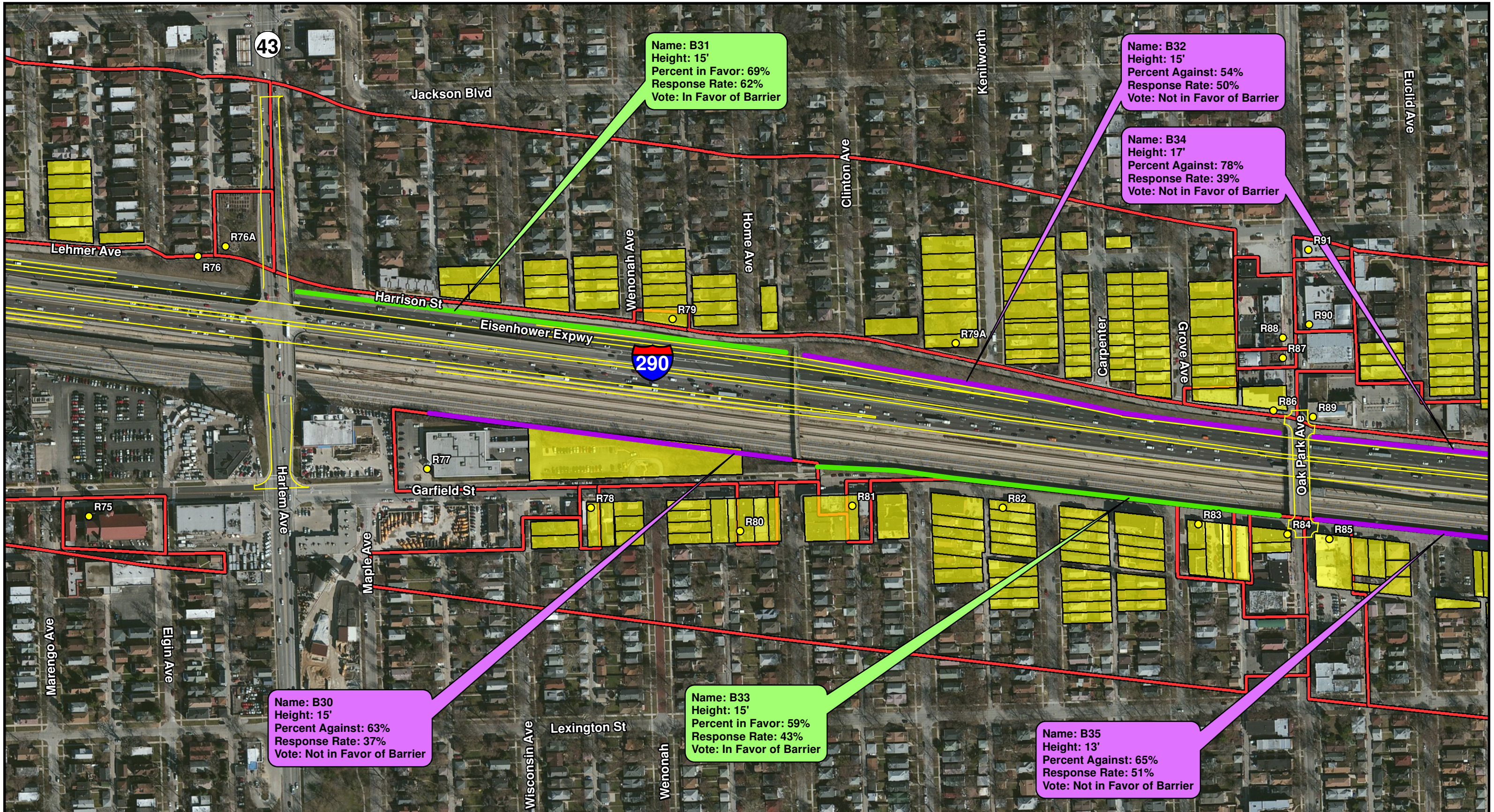
Noise Wall Update

- Benefitted receptors sent ballots in 2015
- Response goal of 1/3
- 2nd round of ballots send in 2016
- Final ballots due end of February
- Current status of voting and location of walls



Village of Oak Park ~ "Eye on the Ike"





Aerial Source: USDA-FSA-APFO NAIP MrSID Mosaic, 2012

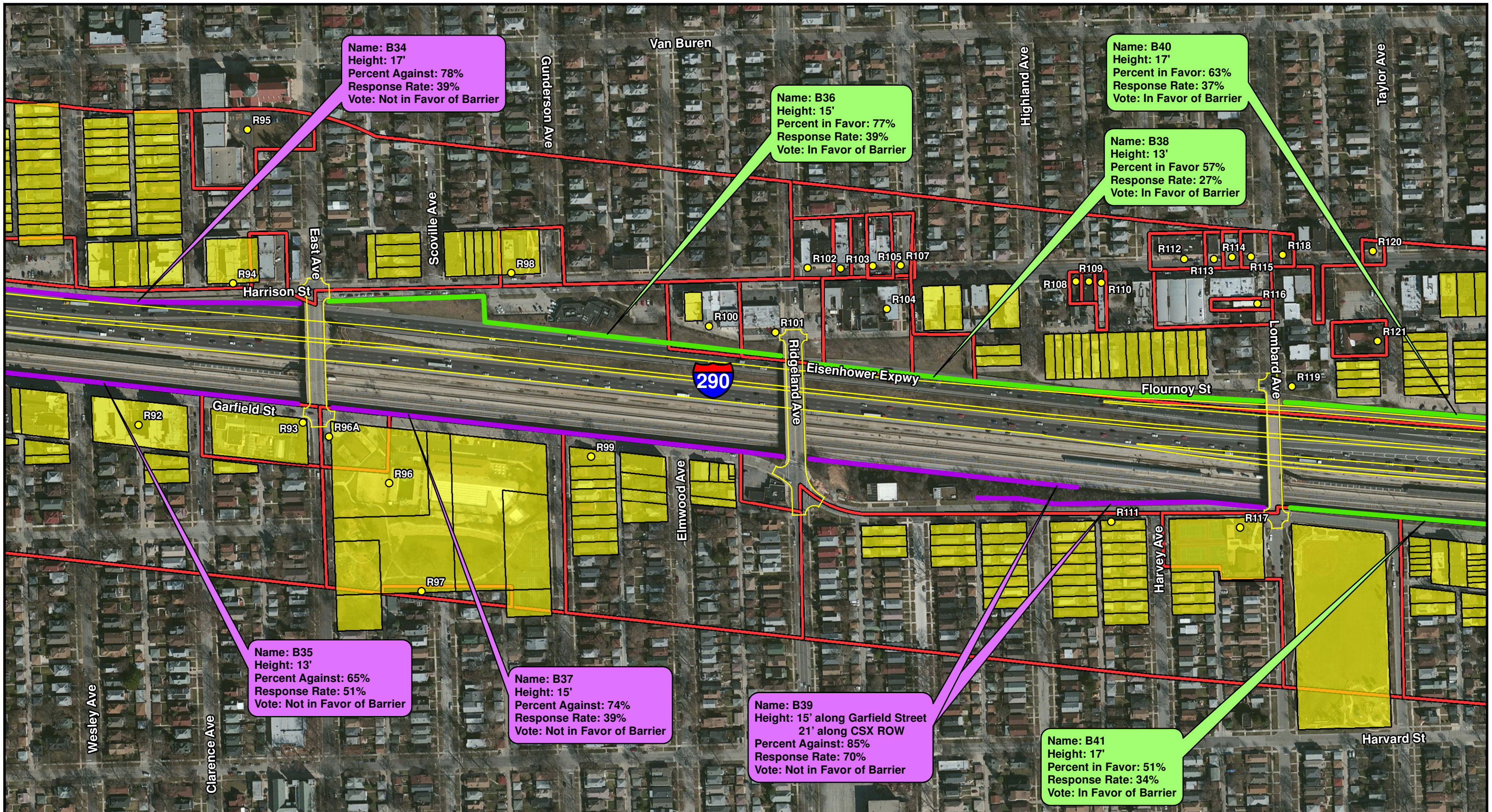
0 250 500
Feet

Legend

- Noise Receptor
- Benefitted by Noise Wall
- Common Noise Environment
- Municipal Boundary
- Trending Vote Not in Favor of Barrier
- Trending Vote in Favor of Barrier
- Proposed Edge of Pavement

Huff & Huff, Inc.
Noise Wall Location Map and Benefitted Receptors
I-290 (IL56/Butterfield Rd to Racine Ave)
Cook County, Illinois
Sheet 9 of 18
NRDG: Noise Reduction Design Plan

* Callout Colored to Match Trending Results of Vote



Name: B34
 Height: 17'
 Percent Against: 78%
 Response Rate: 39%
 Vote: Not in Favor of Barrier

Name: B36
 Height: 15'
 Percent in Favor: 77%
 Response Rate: 39%
 Vote: In Favor of Barrier

Name: B40
 Height: 17'
 Percent in Favor: 63%
 Response Rate: 37%
 Vote: In Favor of Barrier

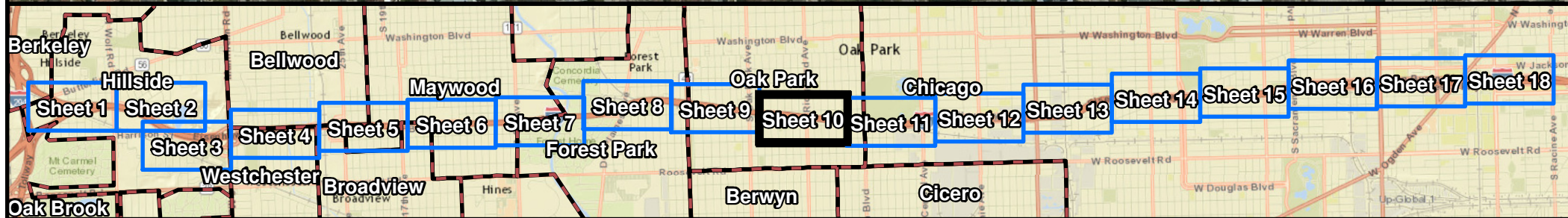
Name: B38
 Height: 13'
 Percent in Favor 57%
 Response Rate: 27%
 Vote: In Favor of Barrier

Name: B35
 Height: 13'
 Percent Against: 65%
 Response Rate: 51%
 Vote: Not in Favor of Barrier

Name: B37
 Height: 15'
 Percent Against: 74%
 Response Rate: 39%
 Vote: Not in Favor of Barrier

Name: B39
 Height: 15' along Garfield Street
 21' along CSX ROW
 Percent Against: 85%
 Response Rate: 70%
 Vote: Not in Favor of Barrier

Name: B41
 Height: 17'
 Percent in Favor: 51%
 Response Rate: 34%
 Vote: In Favor of Barrier



Aerial Source: USDA-FSA-APFO NAIP MrSID Mosaic, 2012

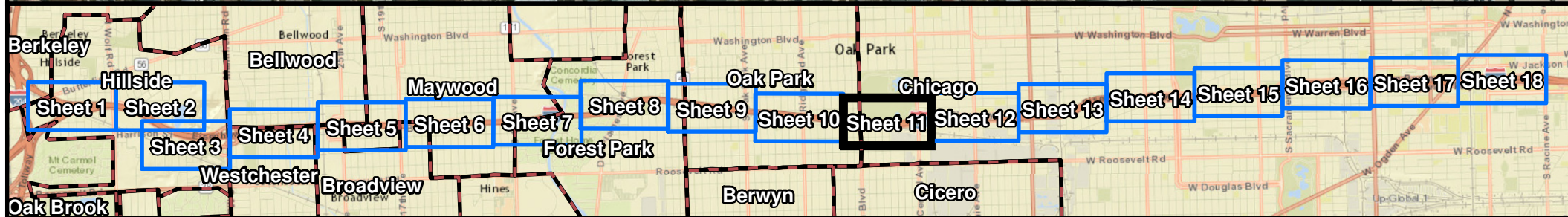
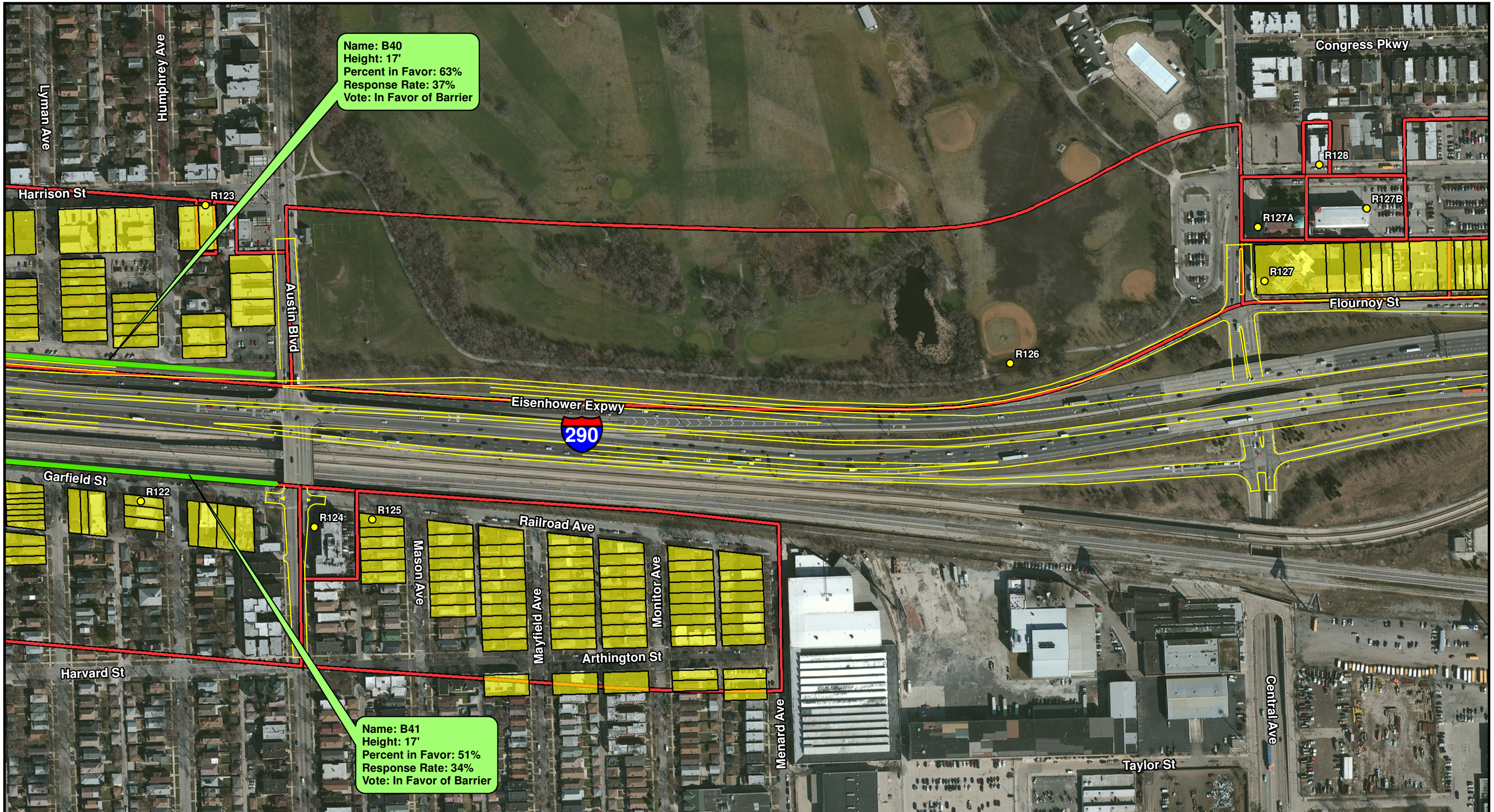
0 250 500
 Feet

Legend

- Noise Receptor
- Benefitted by Noise Wall
- Common Noise Environment
- Municipal Boundary
- Trending Vote Not in Favor of Barrier
- Trending Vote in Favor of Barrier
- Proposed Edge of Pavement

Huff & Huff, Inc.
 Noise Wall Location Map and Benefitted Receptors
 I-290 (IL56/Butterfield Rd to Racine Ave)
 Cook County, Illinois
 Sheet 10 of 18
 NRDG: Noise Reduction Design Plan

* Callout Colored to Match Trending Results of Vote



Aerial Source: USDA-FSA-APFO NAIP MrSID Mosaic, 2012

Legend

- Noise Receptor (Yellow dot)
- Benefitted by Noise Wall (Yellow area)
- Common Noise Environment (Red outline)
- Municipal Boundary (Black outline)
- Trending Vote Not in Favor of Barrier (Purple line)
- Trending Vote in Favor of Barrier (Green line)
- Proposed Edge of Pavement (Yellow line)

* Callout Colored to Match Trending Results of Vote

Huff & Huff, Inc.
 Noise Wall Location Map and Benefitted Receptors
 I-290 (IL56/Butterfield Rd to Racine Ave)
 Cook County, Illinois
 Sheet 11 of 18
 NRDG: Noise Reduction Design Plan

I-290 Crossroad Aesthetic Features

- Focus group of local design professionals
- Developed conceptual proposals for bridges
- Aesthetic treatments for noise walls included
- CTA station designs included



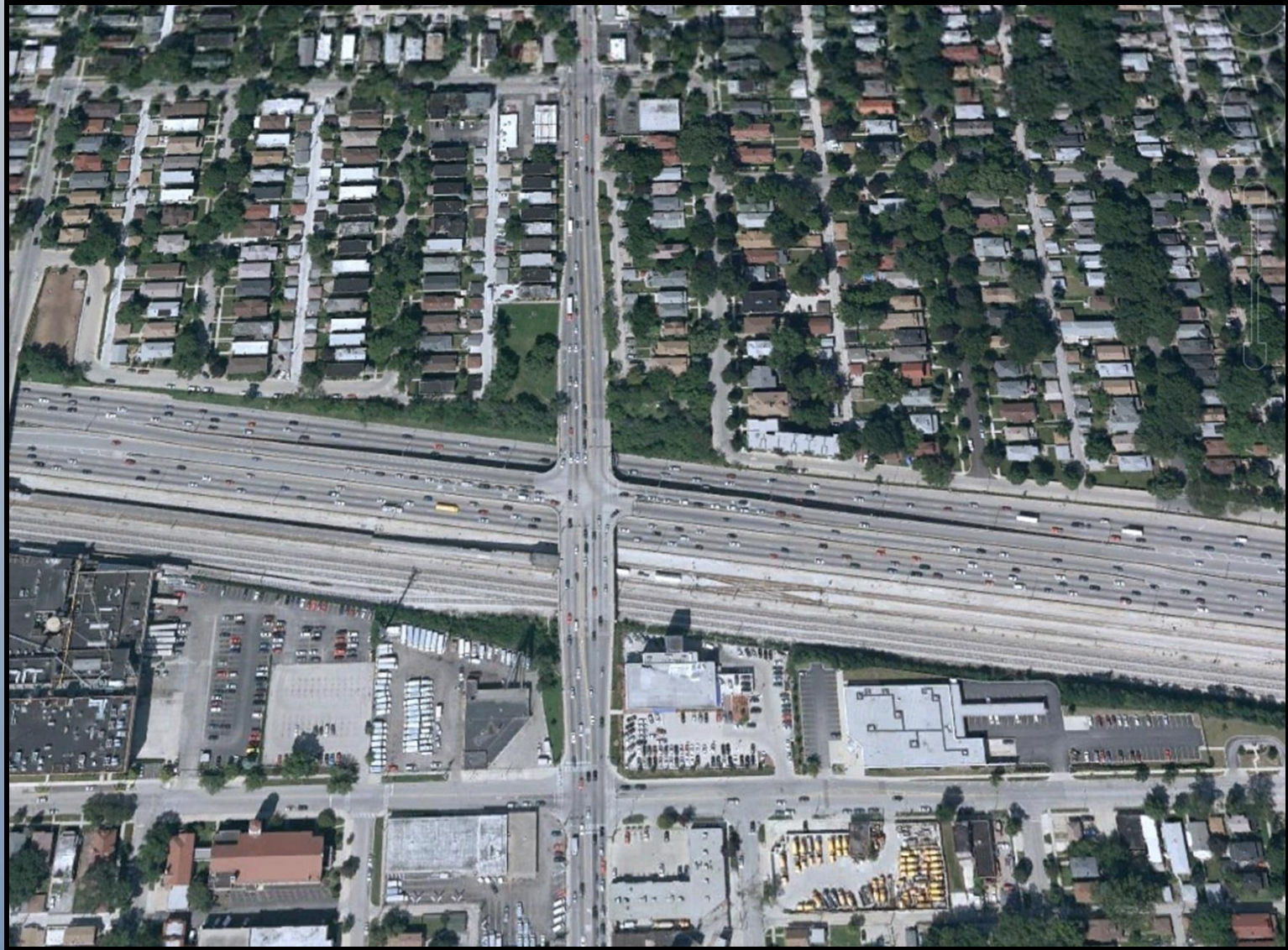
Village of Oak Park ~ "Eye on the Ike"



Aesthetic Treatment Costs

- Low, Med, & High cost scenarios for bridges
- VOP responsible for incremental cost increase
- Must meet IDOT requirements

Existing Conditions – Harlem Avenue



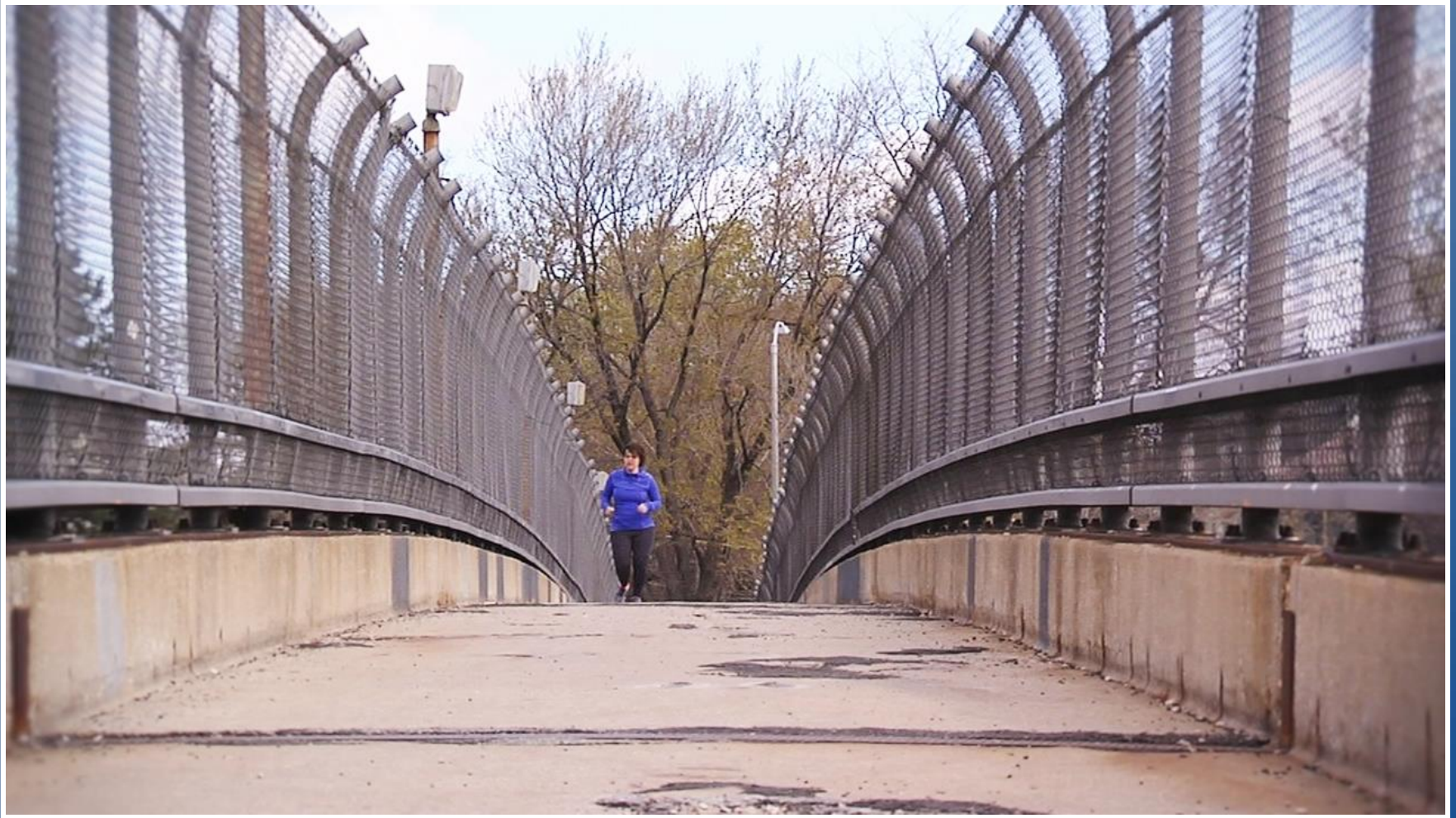
Existing Conditions - East Avenue



Existing Conditions – Home Avenue



Existing Conditions – Home Avenue



Existing Conditions - Lombard Avenue



Existing Conditions - Lombard Avenue



Existing Conditions - Harlem Avenue



Existing Conditions – Austin Boulevard



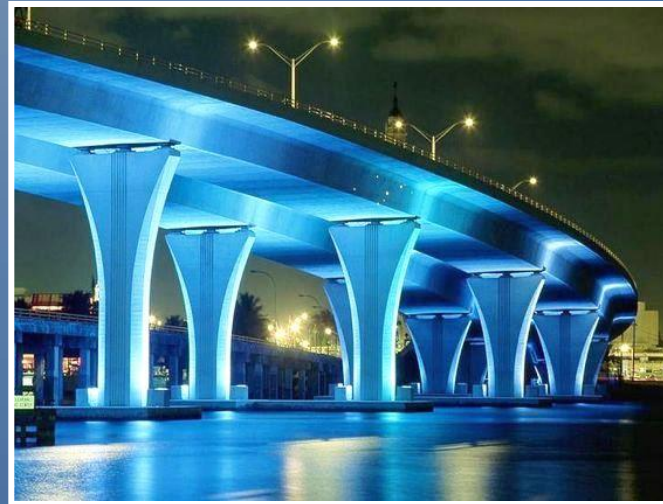
Existing Conditions – Austin Boulevard



Low Scenario – Vehicular Bridge



Low Scenario – Vehicular Bridge



Low Scenario – Pedestrian Bridge



Medium Scenario – Vehicular Bridge

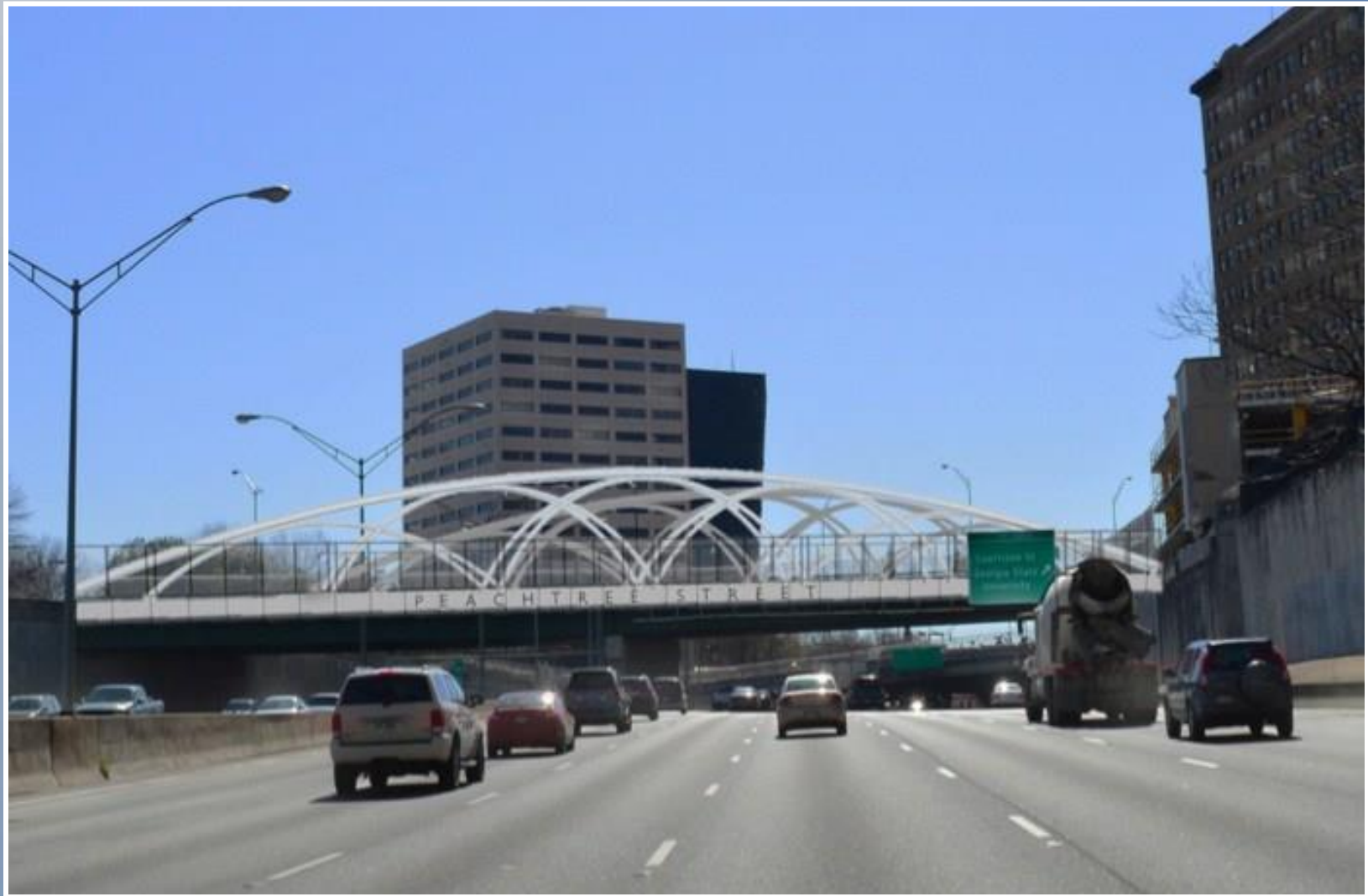


PEACHTREE STREET BRIDGE
bridge enhancement concept

Medium Scenario – Vehicular Bridge



Medium Scenario – Vehicular Bridge



Medium Scenario – Vehicular Bridge



PEACHTREE STREET BRIDGE
bridge enhancement concept

Medium Scenario – Vehicular Bridge



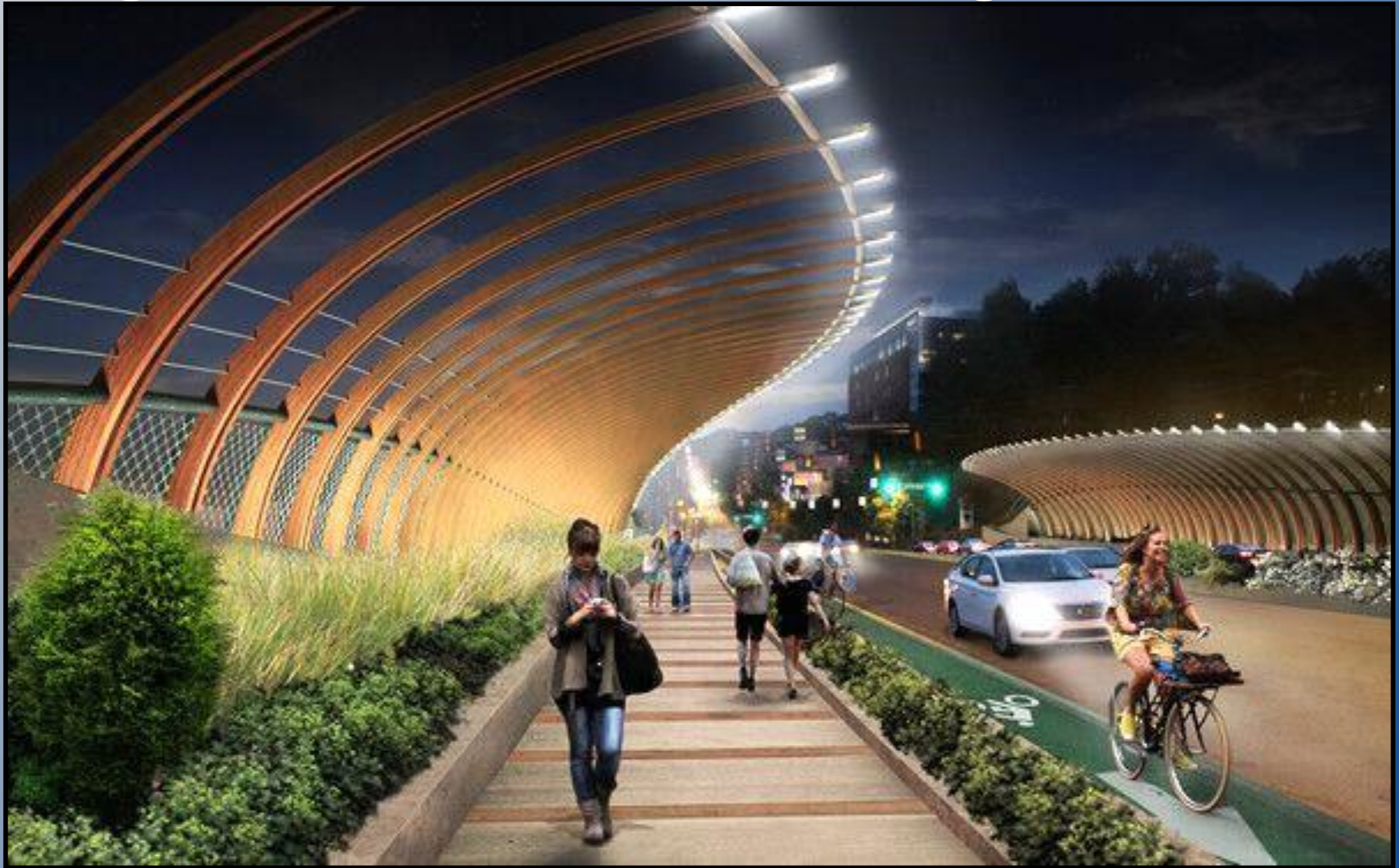
Medium Scenario – Vehicular Bridge



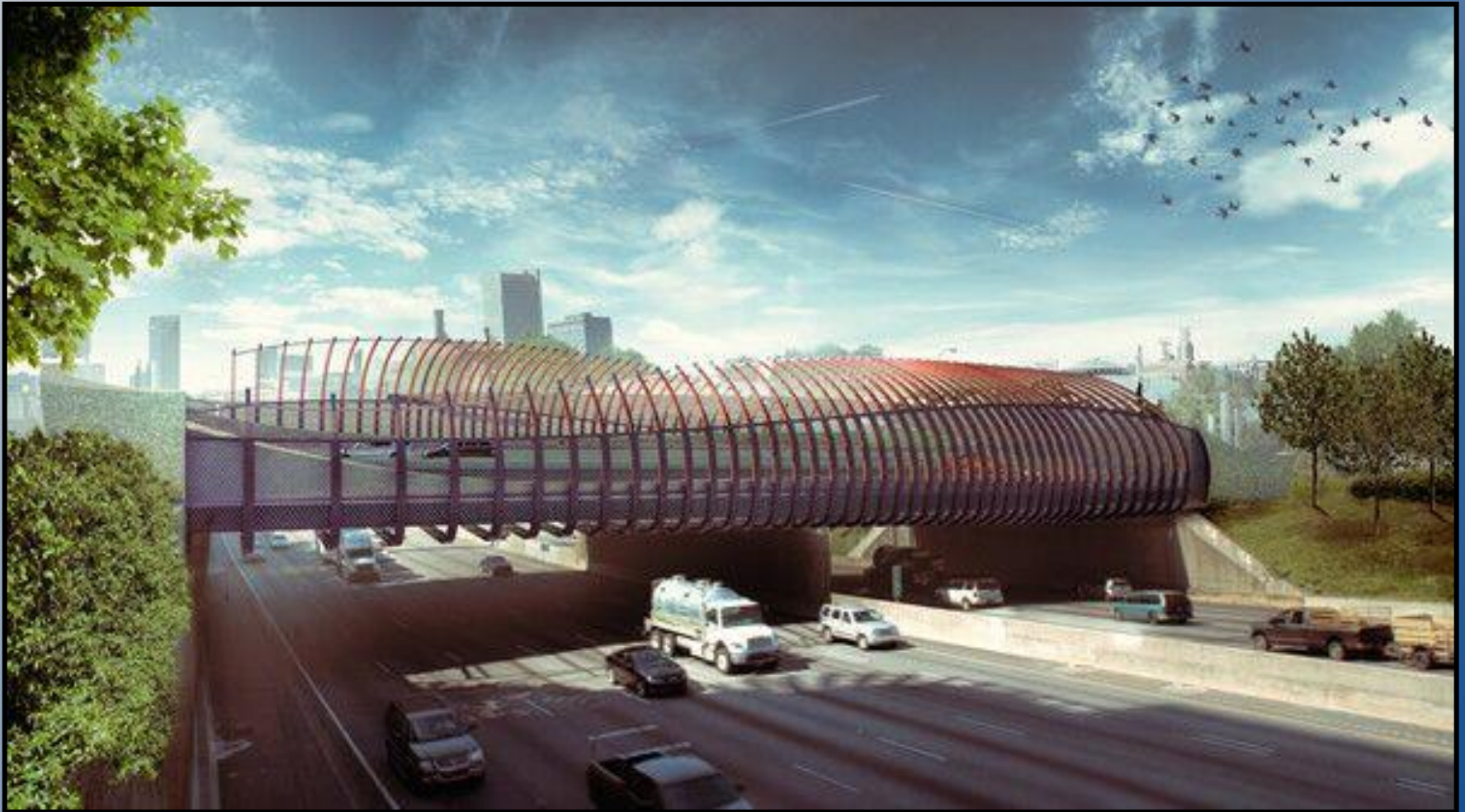
Medium Scenario – Pedestrian Bridge



High Scenario – Vehicular Bridge



High Scenario – Vehicular Bridge



High Scenario – Vehicular Bridge

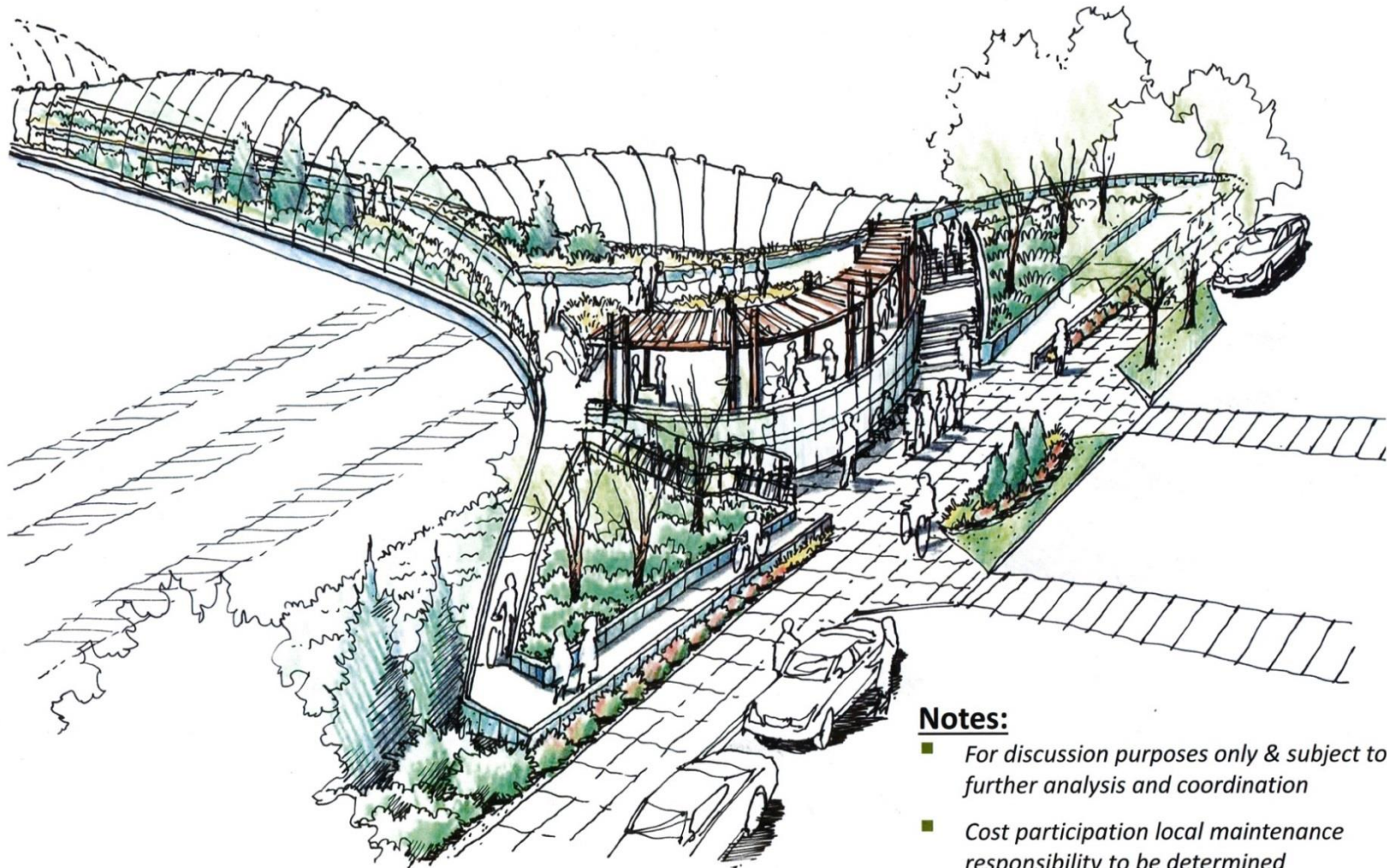


High Scenario – Pedestrian Bridge



Home Avenue Pedestrian Bridge Linear Park Concept

December 2015



Notes:

- For discussion purposes only & subject to further analysis and coordination
- Cost participation local maintenance responsibility to be determined



Village of Oak Park ~ "Eye on the Ike"

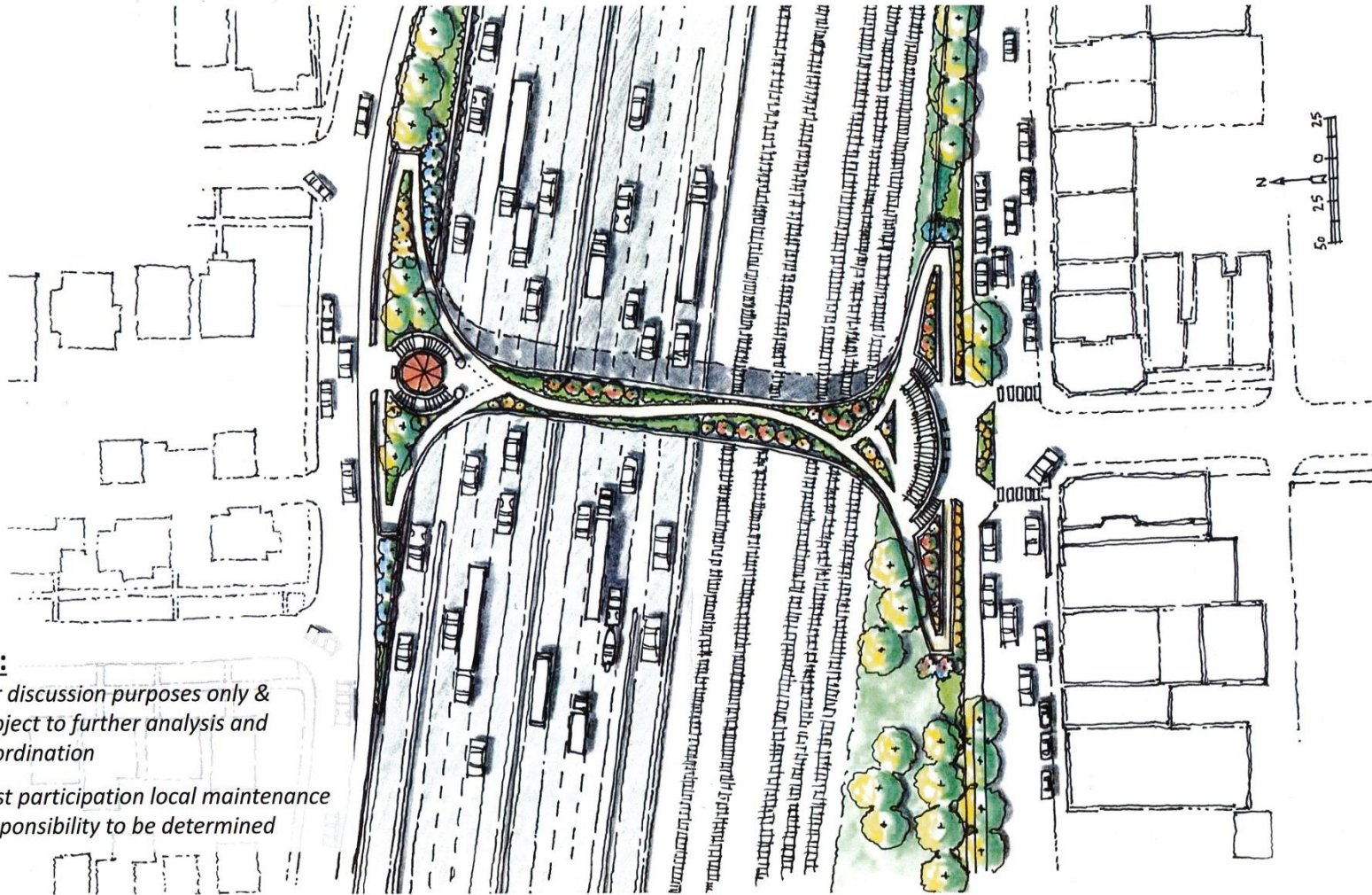


High Scenario – Pedestrian Bridge



Home Avenue Pedestrian Bridge Linear Park Concept

December 2015



Notes:

- For discussion purposes only & subject to further analysis and coordination
- Cost participation local maintenance responsibility to be determined



Village of Oak Park ~ "Eye on the Ike"



High Scenario – Pedestrian Bridge



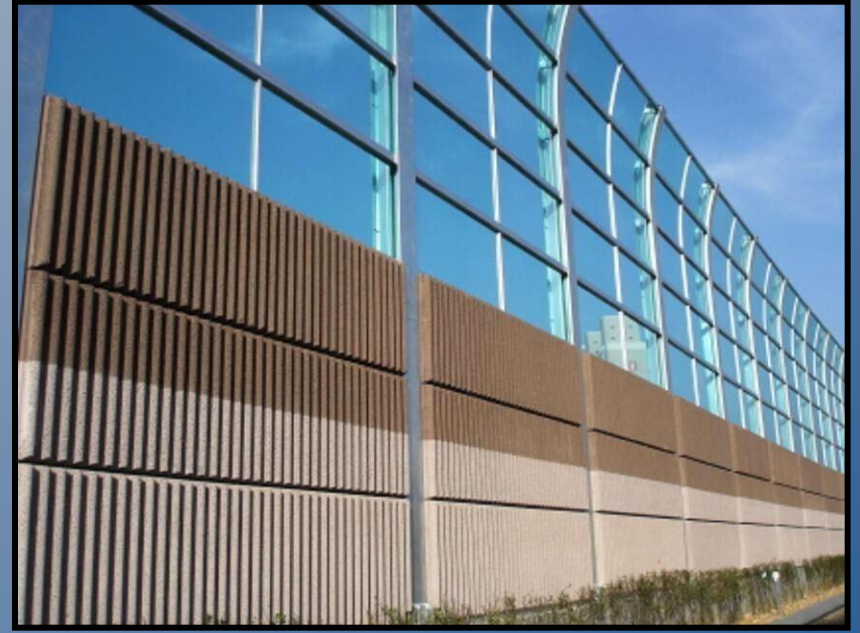
High Scenario – Pedestrian Bridge



High Scenario – Pedestrian Bridge



Noise Walls



Noise Walls



Street Furniture-Bike Racks

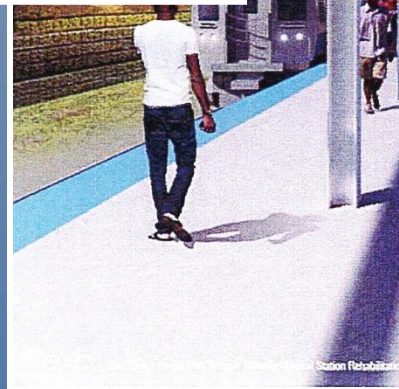
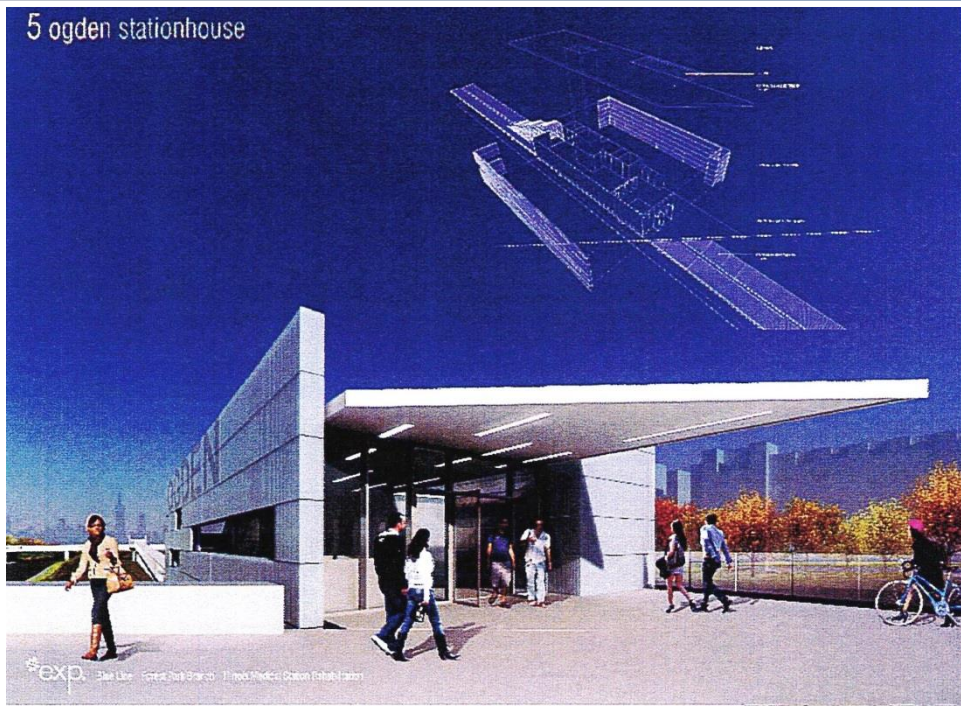


CTA Station Concepts

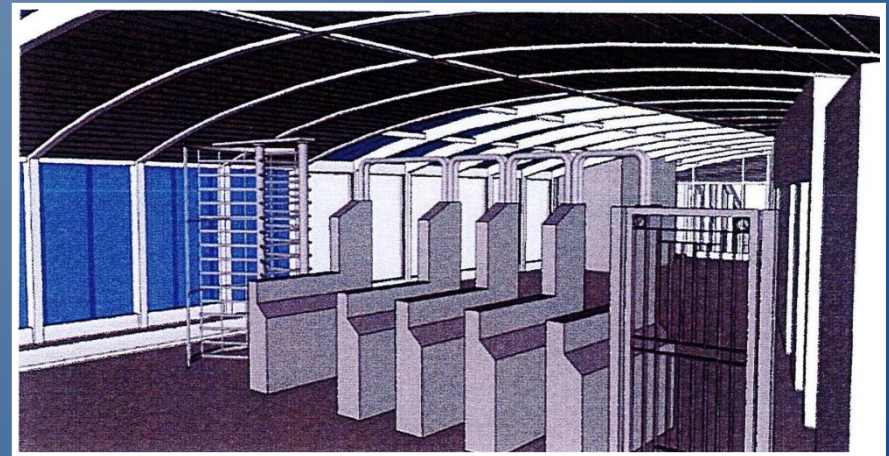
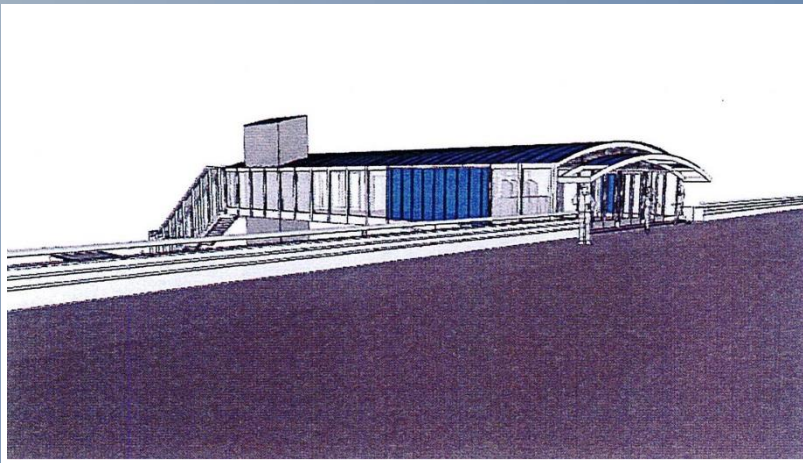
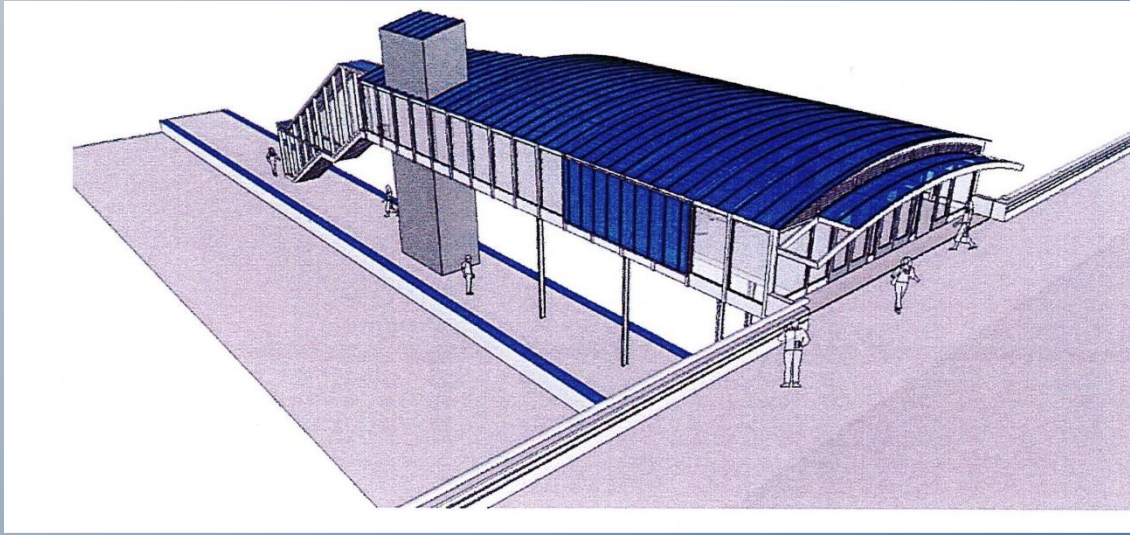


CTA Station Concepts

5 oden stationhouse



CTA Station Concepts (Peoria Street – Blue Line)



CTA Station Concepts (35th Street/IIT – Green Line)



Next Steps

- Final Noise Wall status
- Construction staging and effects
- Public Utility update
- Sustainability Features
- Letter of Intent

February 22, 2016



Village of Oak Park ~ "Eye on the Ike"

