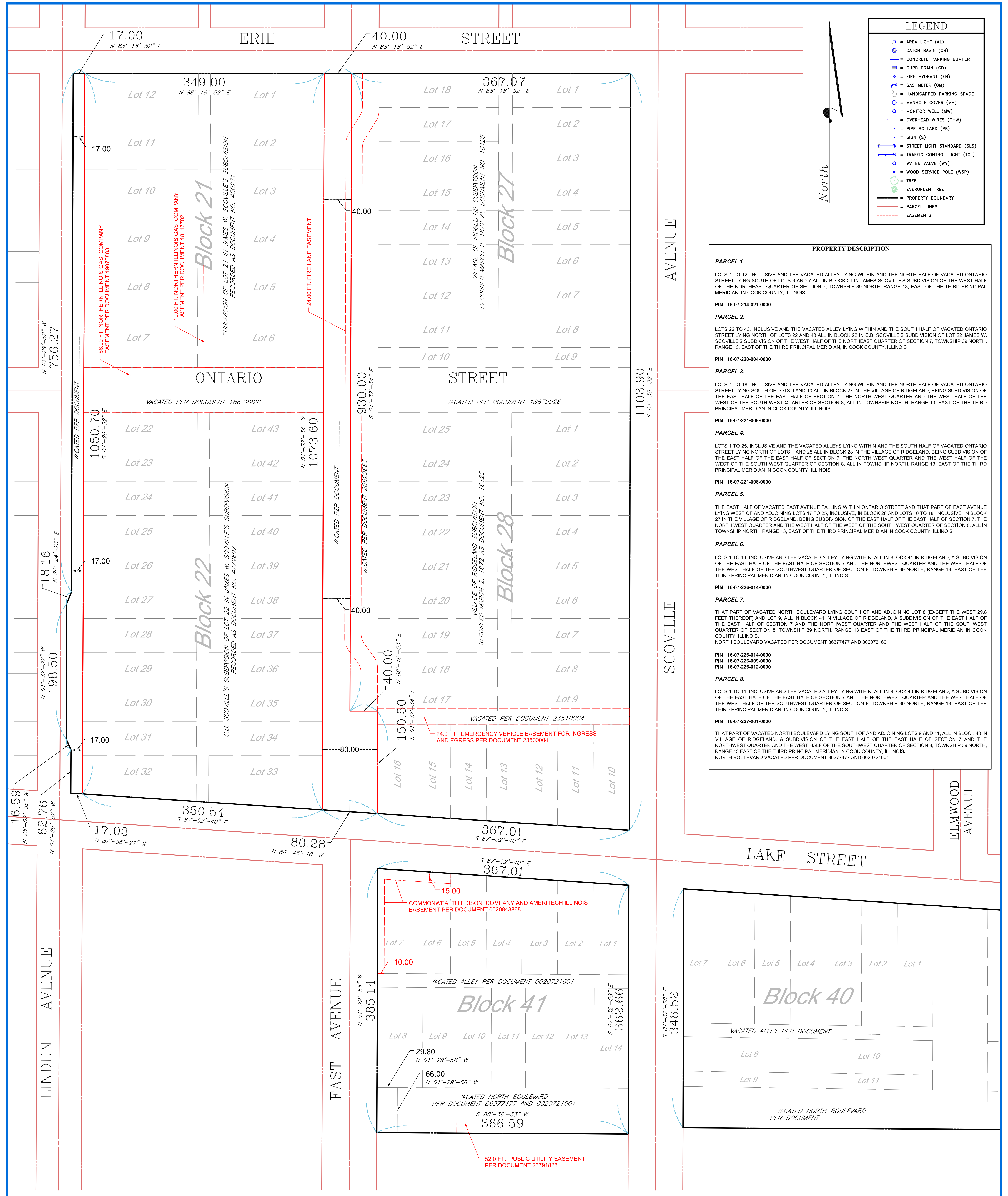


LEGEND

- ⊗ = AREA LIGHT (AL)
- ⊙ = CATCH BASIN (CB)
- ▭ = CONCRETE PARKING BUMPER
- ▭ = CURB DRAIN (CD)
- ⊙ = FIRE HYDRANT (FH)
- ⊙ = GAS METER (GM)
- ⊙ = HANDICAPPED PARKING SPACE
- ⊙ = MANHOLE COVER (MH)
- ⊙ = MONITOR WELL (MW)
- = OVERHEAD WIRES (OHW)
- ⊙ = PIPE BOLLARD (PB)
- ⊙ = SIGN (S)
- ⊙ = STREET LIGHT STANDARD (SLS)
- ⊙ = TRAFFIC CONTROL LIGHT (TCL)
- ⊙ = WATER VALVE (WV)
- ⊙ = WOOD SERVICE POLE (WSP)
- ⊙ = TREE
- ⊙ = EVERGREEN TREE
- = PROPERTY BOUNDARY
- = PARCEL LINES
- = EASEMENTS

North



PROPERTY DESCRIPTION

PARCEL 1:
 LOTS 1 TO 12, INCLUSIVE AND THE VACATED ALLEY LYING WITHIN AND THE NORTH HALF OF VACATED ONTARIO STREET LYING SOUTH OF LOTS 6 AND 7 ALL IN BLOCK 21 IN JAMES W. SCOVILLE'S SUBDIVISION OF THE WEST HALF OF THE NORTHEAST QUARTER OF SECTION 7, TOWNSHIP 39 NORTH, RANGE 13, EAST OF THE THIRD PRINCIPAL MERIDIAN, IN COOK COUNTY, ILLINOIS
 PIN: 16-07-214-021-0000

PARCEL 2:
 LOTS 22 TO 43, INCLUSIVE AND THE VACATED ALLEY LYING WITHIN AND THE SOUTH HALF OF VACATED ONTARIO STREET LYING NORTH OF LOTS 22 AND 43 ALL IN BLOCK 22 IN C.B. SCOVILLE'S SUBDIVISION OF LOT 22 JAMES W. SCOVILLE'S SUBDIVISION OF THE WEST HALF OF THE NORTHEAST QUARTER OF SECTION 7, TOWNSHIP 39 NORTH, RANGE 13, EAST OF THE THIRD PRINCIPAL MERIDIAN, IN COOK COUNTY, ILLINOIS
 PIN: 16-07-220-004-0000

PARCEL 3:
 LOTS 1 TO 18, INCLUSIVE AND THE VACATED ALLEY LYING WITHIN AND THE NORTH HALF OF VACATED ONTARIO STREET LYING SOUTH OF LOTS 9 AND 10 ALL IN BLOCK 27 IN THE VILLAGE OF RIDGELAND, BEING SUBDIVISION OF THE EAST HALF OF THE EAST HALF OF SECTION 7, THE NORTH WEST QUARTER AND THE WEST HALF OF THE WEST OF THE SOUTH WEST QUARTER OF SECTION 8, ALL IN TOWNSHIP NORTH, RANGE 13, EAST OF THE THIRD PRINCIPAL MERIDIAN IN COOK COUNTY, ILLINOIS.
 PIN: 16-07-221-008-0000

PARCEL 4:
 LOTS 1 TO 25, INCLUSIVE AND THE VACATED ALLEYS LYING WITHIN AND THE SOUTH HALF OF VACATED ONTARIO STREET LYING NORTH OF LOTS 1 AND 25 ALL IN BLOCK 28 IN THE VILLAGE OF RIDGELAND, BEING SUBDIVISION OF THE EAST HALF OF THE EAST HALF OF SECTION 7, THE NORTH WEST QUARTER AND THE WEST HALF OF THE WEST OF THE SOUTH WEST QUARTER OF SECTION 8, ALL IN TOWNSHIP NORTH, RANGE 13, EAST OF THE THIRD PRINCIPAL MERIDIAN IN COOK COUNTY, ILLINOIS
 PIN: 16-07-221-008-0000

PARCEL 5:
 THE EAST HALF OF VACATED EAST AVENUE FALLING WITHIN ONTARIO STREET AND THAT PART OF EAST AVENUE LYING WEST OF AND ADJOINING LOTS 17 TO 25, INCLUSIVE, IN BLOCK 28 AND LOTS 10 TO 18, INCLUSIVE, IN BLOCK 27 IN THE VILLAGE OF RIDGELAND, BEING SUBDIVISION OF THE EAST HALF OF THE EAST HALF OF SECTION 7, THE NORTH WEST QUARTER AND THE WEST HALF OF THE WEST OF THE SOUTH WEST QUARTER OF SECTION 8, ALL IN TOWNSHIP NORTH, RANGE 13, EAST OF THE THIRD PRINCIPAL MERIDIAN IN COOK COUNTY, ILLINOIS
 PIN: 16-07-226-014-0000

PARCEL 6:
 LOTS 1 TO 14, INCLUSIVE AND THE VACATED ALLEY LYING WITHIN, ALL IN BLOCK 41 IN RIDGELAND, A SUBDIVISION OF THE EAST HALF OF THE EAST HALF OF SECTION 7 AND THE NORTHWEST QUARTER AND THE WEST HALF OF THE WEST HALF OF THE SOUTH WEST QUARTER OF SECTION 8, TOWNSHIP 39 NORTH, RANGE 13, EAST OF THE THIRD PRINCIPAL MERIDIAN, IN COOK COUNTY, ILLINOIS.
 PIN: 16-07-226-014-0000

PARCEL 7:
 THAT PART OF VACATED NORTH BOULEVARD LYING SOUTH OF AND ADJOINING LOT 8 (EXCEPT THE WEST 29.8 FEET THEREOF) AND LOT 9, ALL IN BLOCK 41 IN VILLAGE OF RIDGELAND, A SUBDIVISION OF THE EAST HALF OF THE EAST HALF OF SECTION 7 AND THE NORTHWEST QUARTER AND THE WEST HALF OF THE SOUTH WEST QUARTER OF SECTION 8, TOWNSHIP 39 NORTH, RANGE 13 EAST OF THE THIRD PRINCIPAL MERIDIAN IN COOK COUNTY, ILLINOIS.
 NORTH BOULEVARD VACATED PER DOCUMENT 86377477 AND 0020721601
 PIN: 16-07-226-014-0000
 PIN: 16-07-226-009-0000
 PIN: 16-07-226-012-0000

PARCEL 8:
 LOTS 1 TO 11, INCLUSIVE AND THE VACATED ALLEY LYING WITHIN, ALL IN BLOCK 40 IN RIDGELAND, A SUBDIVISION OF THE EAST HALF OF THE EAST HALF OF SECTION 7 AND THE NORTHWEST QUARTER AND THE WEST HALF OF THE WEST HALF OF THE SOUTH WEST QUARTER OF SECTION 8, TOWNSHIP 39 NORTH, RANGE 13 EAST OF THE THIRD PRINCIPAL MERIDIAN, IN COOK COUNTY, ILLINOIS.
 NORTH BOULEVARD VACATED PER DOCUMENT 86377477 AND 0020721601
 PIN: 16-07-227-001-0000

THAT PART OF VACATED NORTH BOULEVARD LYING SOUTH OF AND ADJOINING LOTS 9 AND 11, ALL IN BLOCK 40 IN VILLAGE OF RIDGELAND, A SUBDIVISION OF THE EAST HALF OF THE EAST HALF OF SECTION 7 AND THE NORTHWEST QUARTER AND THE WEST HALF OF THE WEST HALF OF THE SOUTH WEST QUARTER OF SECTION 8, TOWNSHIP 39 NORTH, RANGE 13 EAST OF THE THIRD PRINCIPAL MERIDIAN IN COOK COUNTY, ILLINOIS.
 NORTH BOULEVARD VACATED PER DOCUMENT 86377477 AND 0020721601

VACATED STREETS AND ALLEYS

DOCUMENT NO. 17970058	- VACATED ALLEY LOTS 5, 6, 7 AND 8 BLOCK 21
DOCUMENT NO. 18679926	- VACATED ONTARIO STREET BETWEEN LINDEN AND EAST AVENUE RETAINED FOR EXISTING UTILITIES
DOCUMENT NO. 19207081	- VACATED ALLEY NORTH 163 FT. BLOCK 21 EASEMENT RETAINED FOR EXISTING UTILITIES
DOCUMENT NO. 0020721601	- VACATED NORTH BOULEVARD BLOCK 41
DOCUMENT NO. 23500004	- VACATED ALLEY LOTS 10 TO 16 BLOCK 28 EASEMENT RETAINED FOR NORTHERN ILLINOIS GAS AND INGRESS AND EGRESS FOR EMERGENCY VEHICLES
DOCUMENT NO. 25791828	- VACATED NORTH BOULEVARD LOTS 10 TO 14 BLOCK 41 52.0 FT. EASEMENT RETAINED FOR UTILITIES
DOCUMENT NO. 86377477	- VACATED NORTH BOULEVARD BETWEEN LOTS 8 AND 9 BLOCK 41 EASEMENT RETAINED FOR EXISTING UTILITIES
DOCUMENT NO. 86377478	- QUIT CLAIM DEED FOR STELLA BUICK

24.0 FT. FIRE LANE EASEMENT RESERVED IN VILLAGE ORDINANCE VACATING EAST AVENUE

NOTE: UNDERGROUND UTILITIES SHOWN HEREON, HAVE BEEN PLOTTED WITH THE AID OF AVAILABLE RECORDS. FOR LOCATIONS OF UNDERGROUND UTILITY MAINS, PLEASE CONTACT JULIE E. BY CALLING 811 OR 1-800-952-0123.

FIELD WORK COMPLETED ON JUNE 29, 2022
 STATE OF ILLINOIS S.S.
 COUNTY OF DUPAGE

I, PAUL N. MARCHESE, HEREBY CERTIFY THAT I HAVE SURVEYED THE ABOVE DESCRIBED PROPERTY AND THAT THE PLAT HEREON DRAWN IS A CORRECT REPRESENTATION OF SAID SURVEY.
 DATED AT ROSELLE, JULY 12, 2022

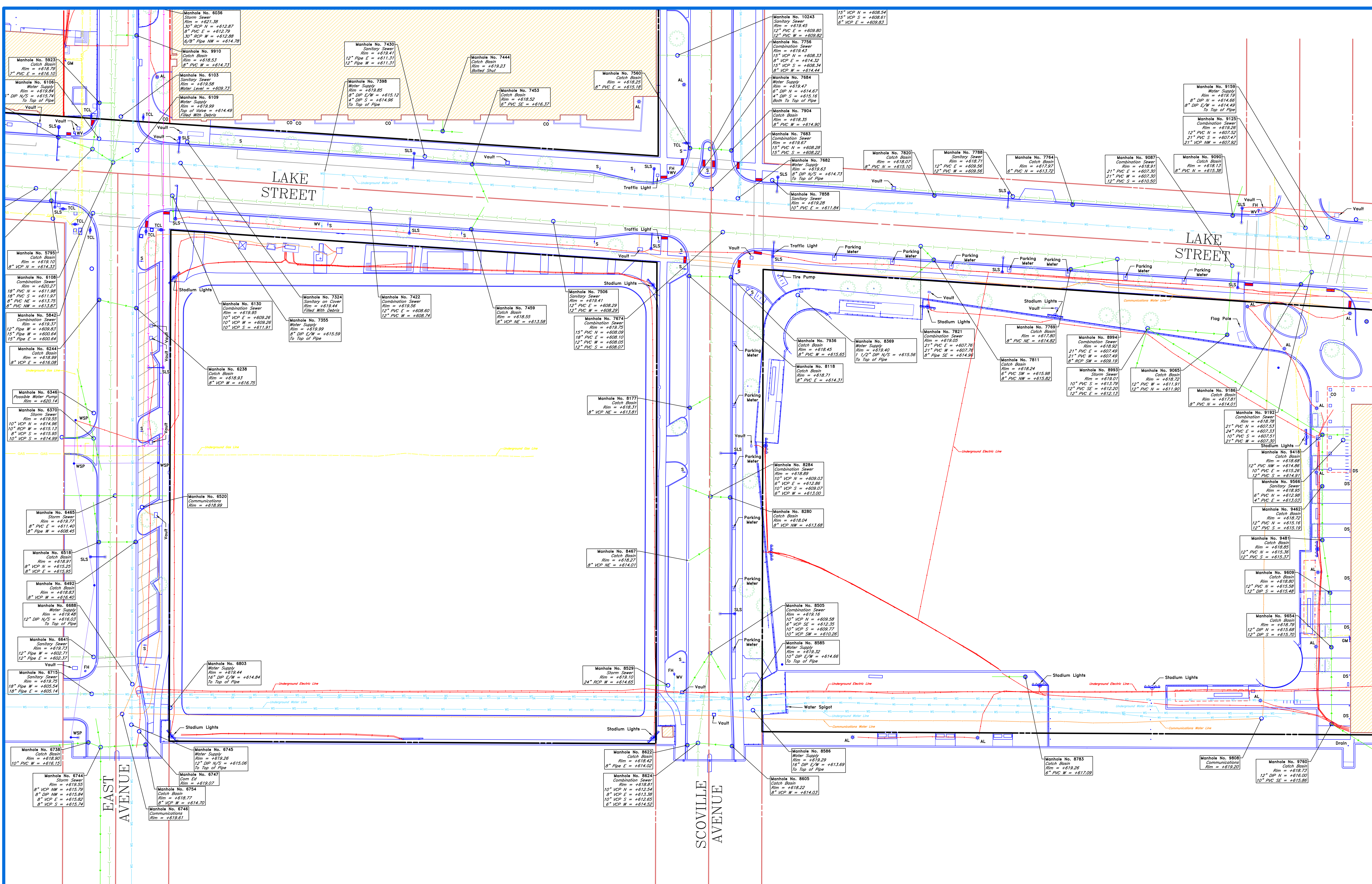
Paul N. Marchese
 ILLINOIS LICENSED PROFESSIONAL LAND SURVEYOR NO. 036-002461
 MY CURRENT LICENSE EXPIRES ON NOVEMBER 30, 2022

COMPARE ALL POINT BEFORE BUILDING BY SAME AND AT ONCE REPORT ANY DIFFERENCE FOR BUILDING LINE AND OTHER RESTRICTIONS NOT SHOWN HEREON REFER TO YOUR CONTRACT, DEED, TITLE INSURANCE POLICY AND ZONING ORDINANCE. BASIS OF BEARINGS SHOWN HEREON HAVE BEEN ASSUMED.

THIS PROFESSIONAL SERVICE CONFORMS TO THE CURRENT ILLINOIS MINIMUM STANDARDS FOR TOPOGRAPHIC SURVEYS.

SHEET: 1 of 7
 DATE: JULY 12, 2022
 SCALE: ONE INCH = FIFTY FEET
 ORDER NO.: 19-16630 "A"
 ORDERED BY: HIGH SCHOOL DISTRICT 200

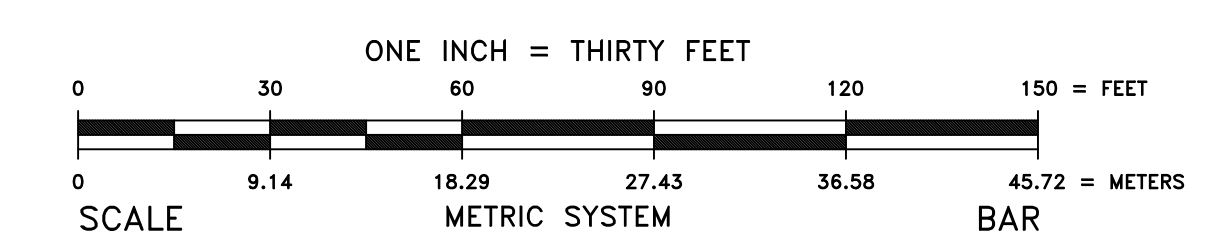
TOPOGRAPHIC SURVEY
 Prepared By
MARCHESE AND SONS, Inc.
 land - marine - construction surveys
 Design Firm No. 184-002762
 10 Monaco Drive Roselle, Illinois 60172 Phone: (630) 894-5680 FAX: (630) 894-8869



LEGEND

- AL = AREA LIGHT (AL)
- CB = CATCH BASIN (CB)
- CPB = CONCRETE PARKING BUMPER
- CD = CURB DRAIN (CD)
- FH = FIRE HYDRANT (FH)
- GM = GAS METER (GM)
- HPK = HANDICAPPED PARKING SPACE
- MW = MONITOR WELL (MW)
- MH = MANHOLE COVER (MH)
- OW = OVERHEAD WIRES (OWH)
- PB = PIPE BOLLARD (PB)
- S = SIGN (S)
- SLS = STREET LIGHT STANDARD (SLS)
- TCL = TRAFFIC CONTROL LIGHT (TCL)
- WV = WATER VALVE (WV)
- WSP = WOOD SERVICE POLE (WSP)
- T = TREE
- ET = EVERGREEN TREE
- PB = PROPERTY BOUNDARY
- PL = PARCEL LINES
- E = EASEMENTS

North



NOTE: UNDERGROUND UTILITIES SHOWN HEREON HAVE BEEN PLOTTED WITH THE AID OF AVAILABLE RECORDS. FOR LOCATIONS OF UNDERGROUND UTILITY MAINS, PLEASE CONTACT J.U.L.I.E. BY CALLING 811 OR 1-800-892-0123.

COMPARE ALL POINT BEFORE BUILDING BY SAME AND AT ONCE REPORT ANY DIFFERENCE FOR BUILDING LINE AND OTHER RESTRICTIONS NOT SHOWN HEREON REFER TO YOUR CONTRACT, DEED, TITLE INSURANCE POLICY AND ZONING ORDINANCE. BASIS OF BEARINGS SHOWN HEREON HAVE BEEN ASSUMED.

THIS PROFESSIONAL SERVICE CONFORMS TO THE CURRENT ILLINOIS MINIMUM STANDARDS FOR TOPOGRAPHIC SURVEYS.

DATE	REVISION	MARK

REVISION SCHEDULE

SHEET: 2 of 7

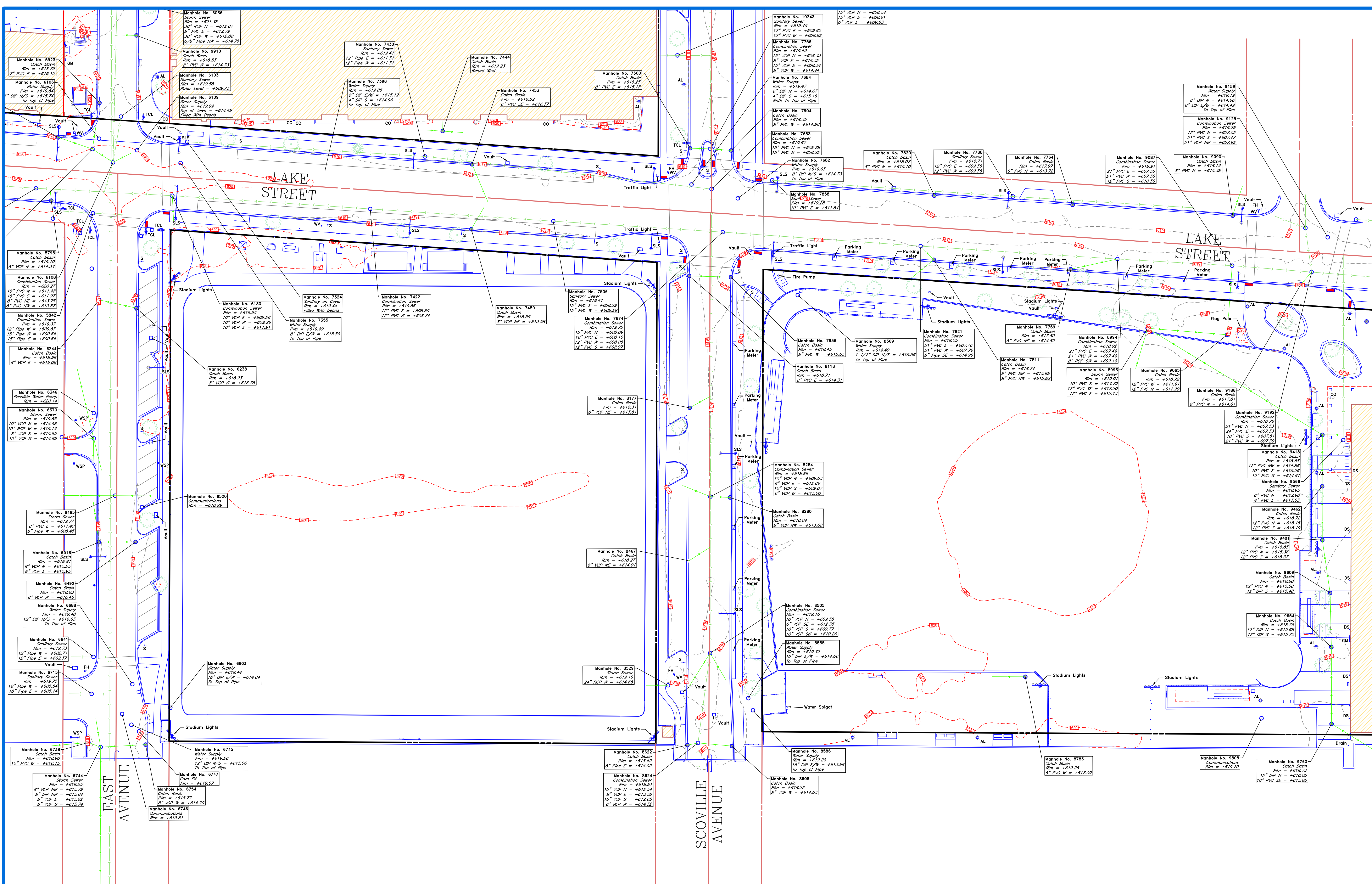
DATE: JULY 12, 2022

SCALE: ONE INCH = THIRTY FEET

ORDER NO.: 19-18630 "A"

ORDERED BY: HIGH SCHOOL DISTRICT 200

TOPOGRAPHIC SURVEY
 Prepared by
MARCHESE AND SONS, Inc.
land - marine - construction surveys
 Design Firm No. 184-022782
 10 Monaco Drive Roselle, Illinois 60172 Phone: (630) 894-5680 FAX: (630) 894-8869



LEGEND

- AL = AREA LIGHT (AL)
- CB = CATCH BASIN (CB)
- CP = CONCRETE PARKING BUMPER
- CD = CURB DRAIN (CD)
- FH = FIRE HYDRANT (FH)
- GM = GAS METER (GM)
- HP = HANDICAPPED PARKING SPACE
- MW = MONITOR WELL (MW)
- MH = MANHOLE COVER (MH)
- OW = OVERHEAD WIRES (OWH)
- PB = PIPE BOLLARD (PB)
- S = SIGN (S)
- SLS = STREET LIGHT STANDARD (SLS)
- TCL = TRAFFIC CONTROL LIGHT (TCL)
- WV = WATER VALVE (WV)
- WSP = WOOD SERVICE POLE (WSP)
- T = TREE
- ET = EVERGREEN TREE
- PB = PROPERTY BOUNDARY
- PL = PARCEL LINES
- E = EASEMENTS

North

COMPARE ALL POINT BEFORE BUILDING BY SAME AND AT ONCE REPORT ANY DIFFERENCE FOR BUILDING LINE AND OTHER RESTRICTIONS NOT SHOWN HEREON REFER TO YOUR CONTRACT, DEED, TITLE INSURANCE POLICY AND ZONING ORDINANCE. BASIS OF BEARINGS SHOWN HEREON HAVE BEEN ASSUMED.

"THIS PROFESSIONAL SERVICE CONFORMS TO THE CURRENT ILLINOIS MINIMUM STANDARDS FOR TOPOGRAPHIC SURVEYS."

DATE	REVISION	MARK

REVISION SCHEDULE

SHEET: 2 of 7

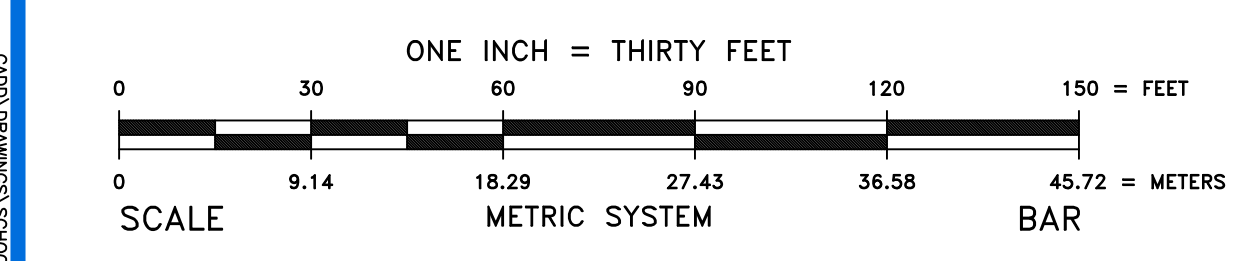
DATE: JULY 12, 2022

SCALE: ONE INCH = THIRTY FEET

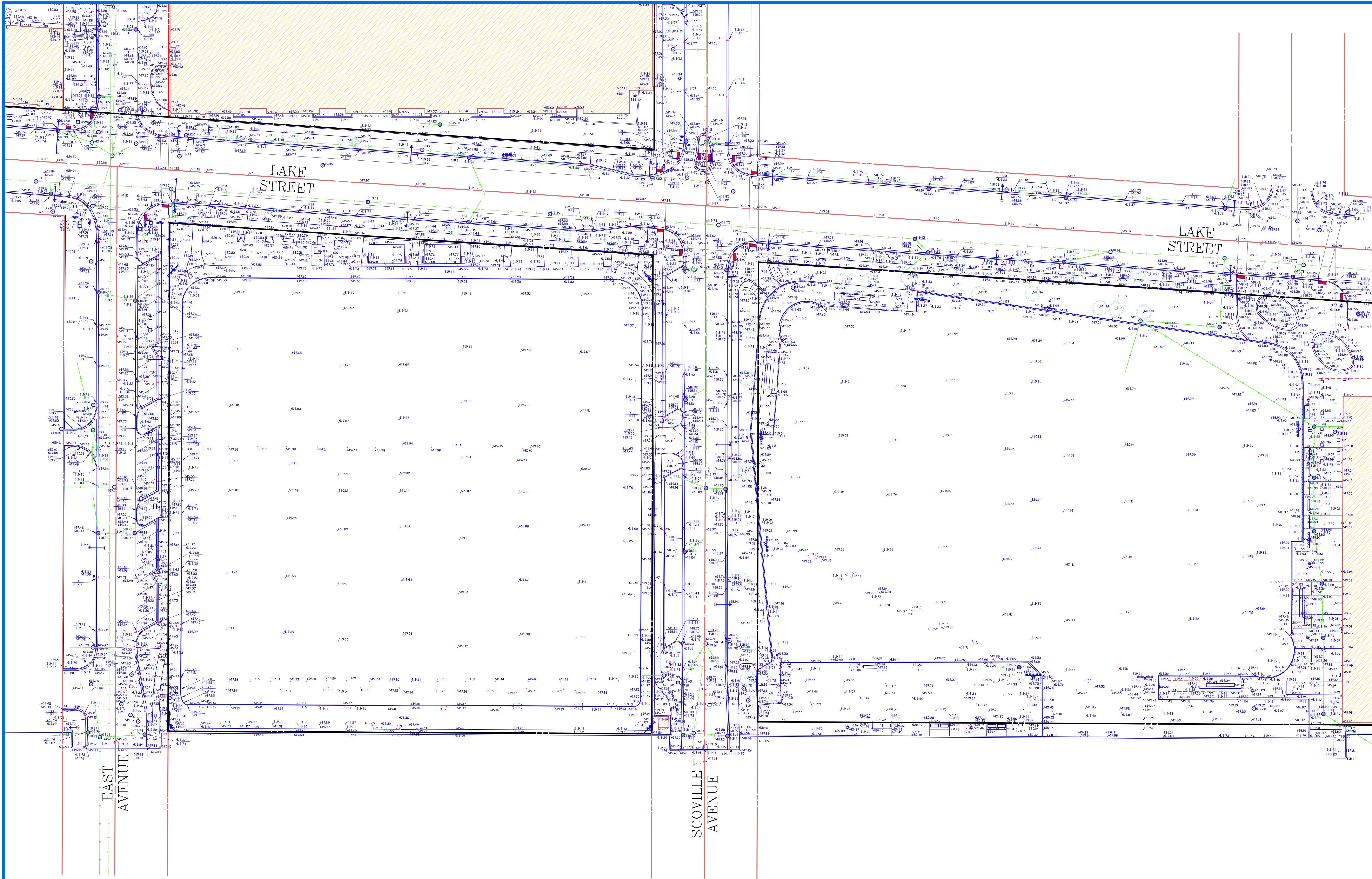
ORDER NO.: 19-16630 "A"

ORDERED BY: HIGH SCHOOL DISTRICT 200

TOPOGRAPHIC SURVEY
Prepared by
MARCHESE AND SONS, Inc.
land - marine - construction surveys
 Design Firm No. 184-022762
 10 Monaco Drive Roselle, Illinois 60172 Phone: (630) 894-5680 FAX: (630) 894-8869



NOTE: UNDERGROUND UTILITIES SHOWN HEREON HAVE BEEN PLOTTED WITH THE AID OF AVAILABLE RECORDS. FOR LOCATIONS OF UNDERGROUND UTILITY MAINS, PLEASE CONTACT J.U.L.I.E. BY CALLING 811 OR 1-800-892-0123.



- LEGEND**
- = AREA LIGHT (AL)
 - = CATCH BASIN (CB)
 - = CONCRETE PARKING BUMPER
 - = CURB DRAIN (CD)
 - ◆ = FIRE HYDRANT (FH)
 - ⊕ = GAS METER (GM)
 - ♿ = HANDICAPPED PARKING SPACE
 - = MANHOLE COVER (MH)
 - = MONITOR WELL (MW)
 - = OVERHEAD WIRES (OHW)
 - = PIPE BOLLARD (PB)
 - ⊕ = SIGN (S)
 - = STREET LIGHT STANDARD (SLS)
 - = TRAFFIC CONTROL LIGHT (TCL)
 - = WATER WELL (WW)
 - ⊕ = WOOD SERVICE POLE (WSP)
 - = TREE
 - = EVERGREEN TREE
 - = PARCEL BOUNDARY
 - = EASEMENTS

North

COMPARE ALL POINT BEFORE BUILDING BY SAME AND AT ONCE REPORT ANY DIFFERENCE FOR BUILDING LINE AND OTHER RESTRICTIONS NOT SHOWN HEREON REFER TO YOUR CONTRACT, DEED, TITLE INSURANCE POLICY AND ZONING ORDINANCE. BASIS OF BEARINGS SHOWN HEREON HAVE BEEN ASSUMED.

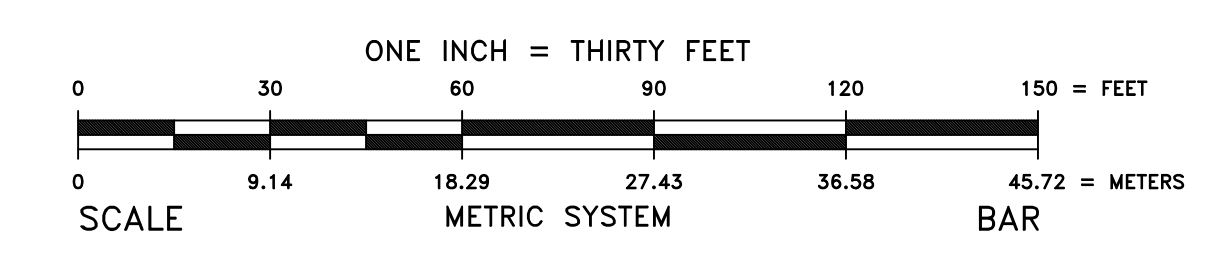
"THIS PROFESSIONAL SERVICE CONFORMS TO THE CURRENT ILLINOIS MINIMUM STANDARDS FOR TOPOGRAPHIC SURVEYS."

DATE	REVISION	MARK

REVISION SCHEDULE

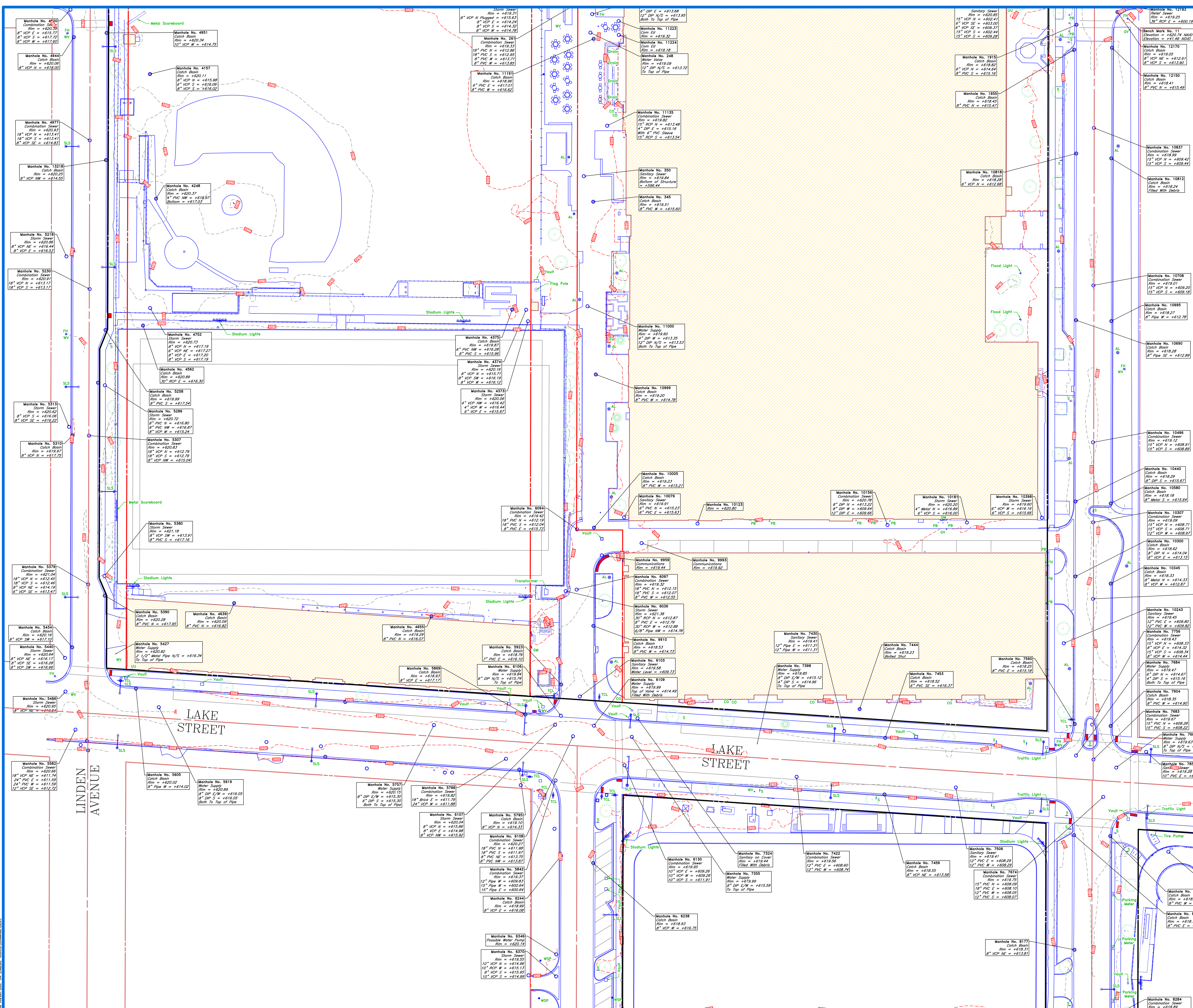
SHEET: 3 of 7
 DATE: JULY 12, 2022
 SCALE: ONE INCH = THIRTY FEET
 ORDER NO.: 19-16630 "A"
 ORDERED BY: HIGH SCHOOL DISTRICT 200

TOPOGRAPHIC SURVEY
Prepared by
MARCHESE AND SONS, Inc.
land - marine - construction surveys
 10 Monoco Drive Roselle, Illinois 60172 Phone : (630) 894-5680 FAX : (630) 894-8869



NOTE: UNDERGROUND UTILITIES SHOWN HEREON HAVE BEEN PLOTTED WITH THE AID OF AVAILABLE RECORDS. FOR LOCATIONS OF UNDERGROUND UTILITY MAINS, PLEASE CONTACT J.U.L.I.E. BY CALLING 811 OR 1-800-892-0123.

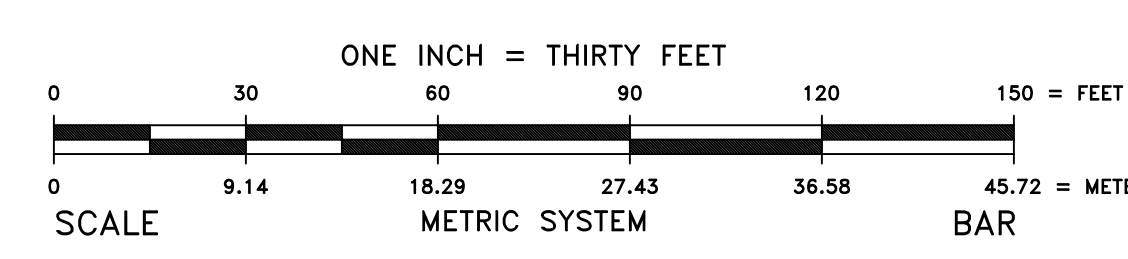




LEGEND

- = AREA LIGHT (AL)
- = CATCH BASIN (CB)
- ▭ = CONCRETE PARKING BUMPER
- ▭ = CURB DRAIN (CD)
- = FIRE HYDRANT (FH)
- = GAS METER (GM)
- = HANDICAPPED PARKING SPACE
- = MANHOLE COVER (MH)
- = MONITOR WELL (MW)
- = OVERHEAD WIRES (OHW)
- = PIPE BOLLARD (PB)
- = SIGN (S)
- = STREET LIGHT STANDARD (SLS)
- = TRAFFIC CONTROL LIGHT (TCL)
- = WATER VALVE (WV)
- = WOOD SERVICE POLE (WSP)
- = TREE
- = EVERGREEN TREE
- = PROPERTY BOUNDARY
- = PARCEL LINES
- = EASEMENTS

North



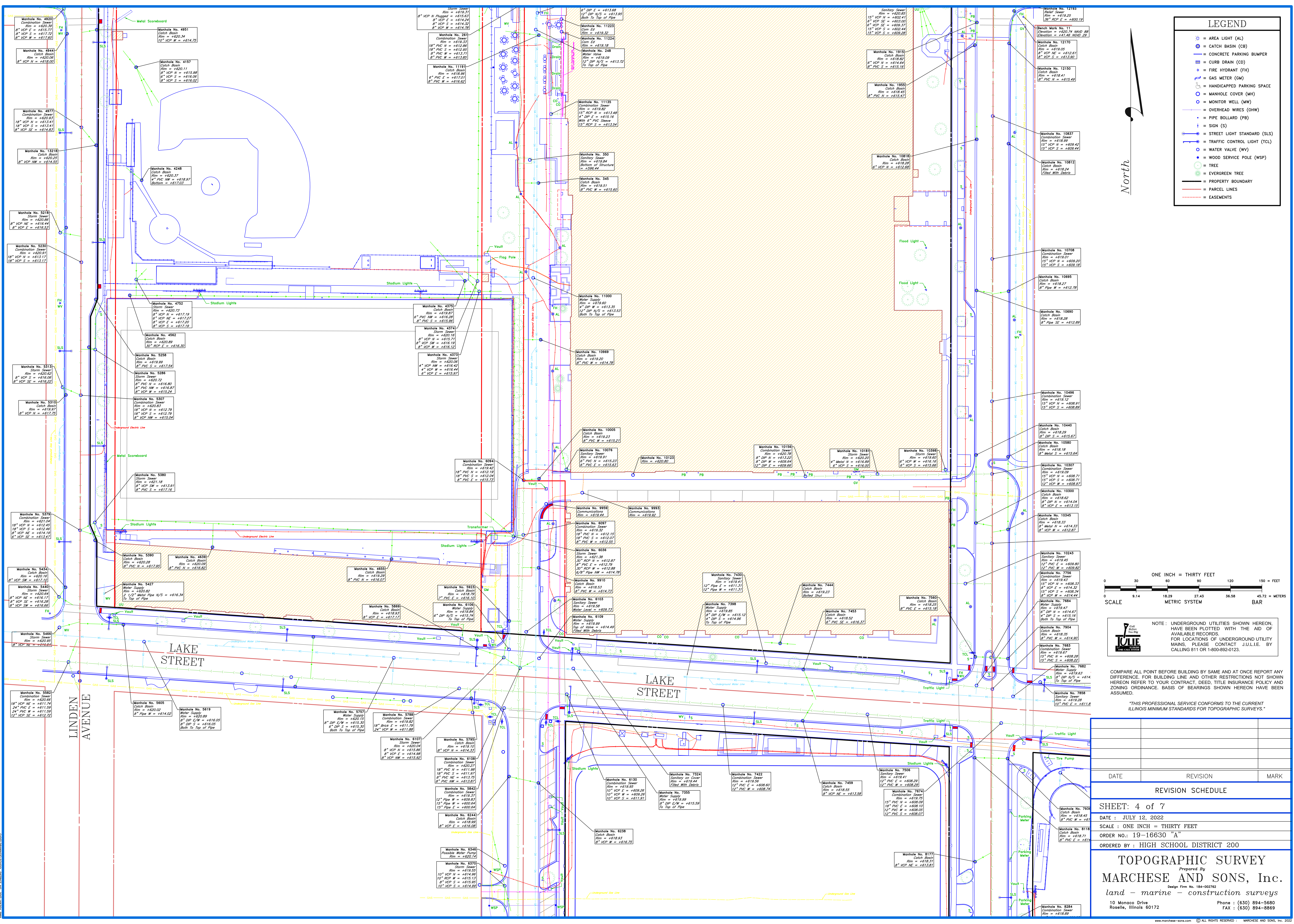
NOTE: UNDERGROUND UTILITIES SHOWN HEREON, HAVE BEEN PLOTTED WITH THE AID OF AVAILABLE RECORDS. FOR LOCATIONS OF UNDERGROUND UTILITY MAINS, PLEASE CONTACT J.U.L.I.E. BY CALLING 811 OR 1-800-892-0123.

COMPARE ALL POINT BEFORE BUILDING BY SAME AND AT ONCE REPORT ANY DIFFERENCE. FOR BUILDING LINE AND OTHER RESTRICTIONS NOT SHOWN HEREON REFER TO YOUR CONTRACT, DEED, TITLE INSURANCE POLICY AND ZONING ORDINANCE. BASIS OF BEARINGS SHOWN HEREON HAVE BEEN ASSUMED.

"THIS PROFESSIONAL SERVICE CONFORMS TO THE CURRENT ILLINOIS MINIMUM STANDARDS FOR TOPOGRAPHIC SURVEYS."

DATE	REVISION	MARK
REVISION SCHEDULE		
SHEET: 4 of 7		
DATE: JULY 12, 2022		
SCALE: ONE INCH = THIRTY FEET		
ORDER NO.: 19-16630 "A"		
ORDERED BY: HIGH SCHOOL DISTRICT 200		
TOPOGRAPHIC SURVEY Prepared by MARCHESE AND SONS, Inc. <i>land - marine - construction surveys</i> Design Firm No. 184-002782 10 Monaco Drive Roselle, Illinois 60172 Phone: (630) 894-5680 FAX: (630) 894-8869		

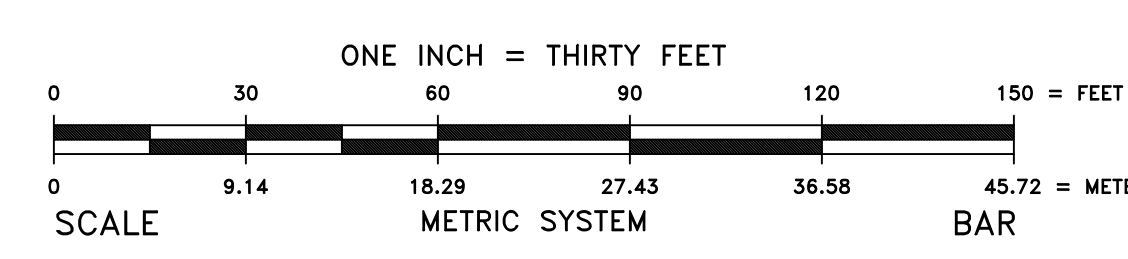
DATE PLOTTED: 07/12/2022 10:00 AM



LEGEND

- = AREA LIGHT (AL)
- = CATCH BASIN (CB)
- = CONCRETE PARKING BUMPER
- = CURB DRAIN (CD)
- = FIRE HYDRANT (FH)
- = GAS METER (GM)
- = HANDICAPPED PARKING SPACE
- = MANHOLE COVER (MH)
- = MONITOR WELL (MW)
- = OVERHEAD WIRES (OHW)
- = PIPE BOLLARD (PB)
- = SIGN (S)
- = STREET LIGHT STANDARD (SLS)
- = TRAFFIC CONTROL LIGHT (TCL)
- = WATER VALVE (WV)
- = WOOD SERVICE POLE (WSP)
- = TREE
- = EVERGREEN TREE
- = PROPERTY BOUNDARY
- = PARCEL LINES
- = EASEMENTS

North



NOTE: UNDERGROUND UTILITIES SHOWN HEREON, HAVE BEEN PLOTTED WITH THE AID OF AVAILABLE RECORDS. FOR LOCATIONS OF UNDERGROUND UTILITY MAINS, PLEASE CONTACT J.U.L.I.E. BY CALLING 811 OR 1-800-892-0123.

COMPARE ALL POINT BEFORE BUILDING BY SAME AND AT ONCE REPORT ANY DIFFERENCE. FOR BUILDING LINE AND OTHER RESTRICTIONS NOT SHOWN HEREON REFER TO YOUR CONTRACT, DEED, TITLE INSURANCE POLICY AND ZONING ORDINANCE. BASIS OF BEARINGS SHOWN HEREON HAVE BEEN ASSUMED.

"THIS PROFESSIONAL SERVICE CONFORMS TO THE CURRENT ILLINOIS MINIMUM STANDARDS FOR TOPOGRAPHIC SURVEYS."

DATE	REVISION	MARK

REVISION SCHEDULE

SHEET: 4 of 7

DATE: JULY 12, 2022

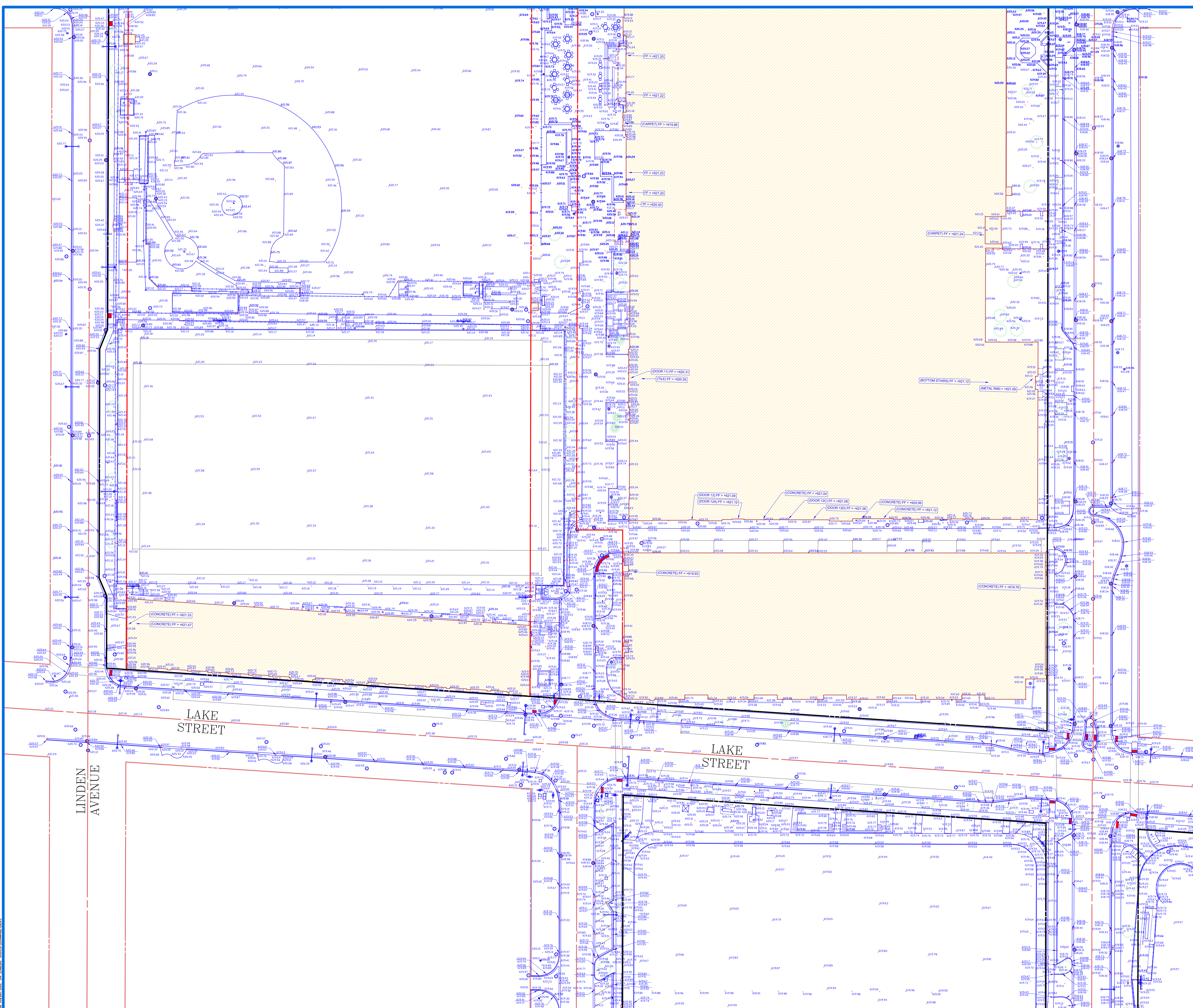
SCALE: ONE INCH = THIRTY FEET

ORDER NO.: 19-16630 "A"

ORDERED BY: HIGH SCHOOL DISTRICT 200

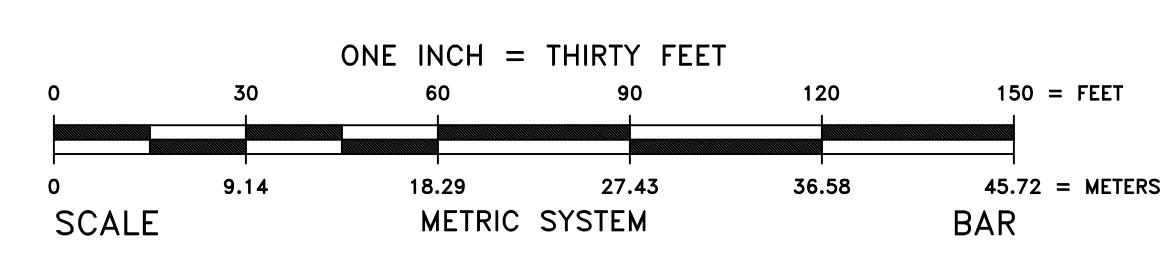
TOPOGRAPHIC SURVEY
 Prepared by
MARCHESE AND SONS, Inc.
land - marine - construction surveys
 Design Firm No. 184-002782
 10 Monaco Drive Roselle, Illinois 60172 Phone: (630) 894-5680 FAX: (630) 894-8869

DATE PLOTTED: 07/12/2022 10:00 AM



- LEGEND**
- = AREA LIGHT (AL)
 - = CATCH BASIN (CB)
 - = CONCRETE PARKING BUMPER
 - ▣ = CURB DRAIN (CD)
 - ◆ = FIRE HYDRANT (FH)
 - ⊕ = GAS METER (GM)
 - ♿ = HANDICAPPED PARKING SPACE
 - = MANHOLE COVER (MH)
 - = MONITOR WELL (MW)
 - = OVERHEAD WIRES (OHW)
 - = PIPE BOLLARD (PB)
 - = SIGN (S)
 - = STREET LIGHT STANDARD (SLS)
 - = TRAFFIC CONTROL LIGHT (TCL)
 - = WATER VALVE (WV)
 - = WOOD SERVICE POLE (WSP)
 - = TREE
 - = EVERGREEN TREE
 - = PROPERTY BOUNDARY
 - = PARCEL LINES
 - = EASEMENTS

North



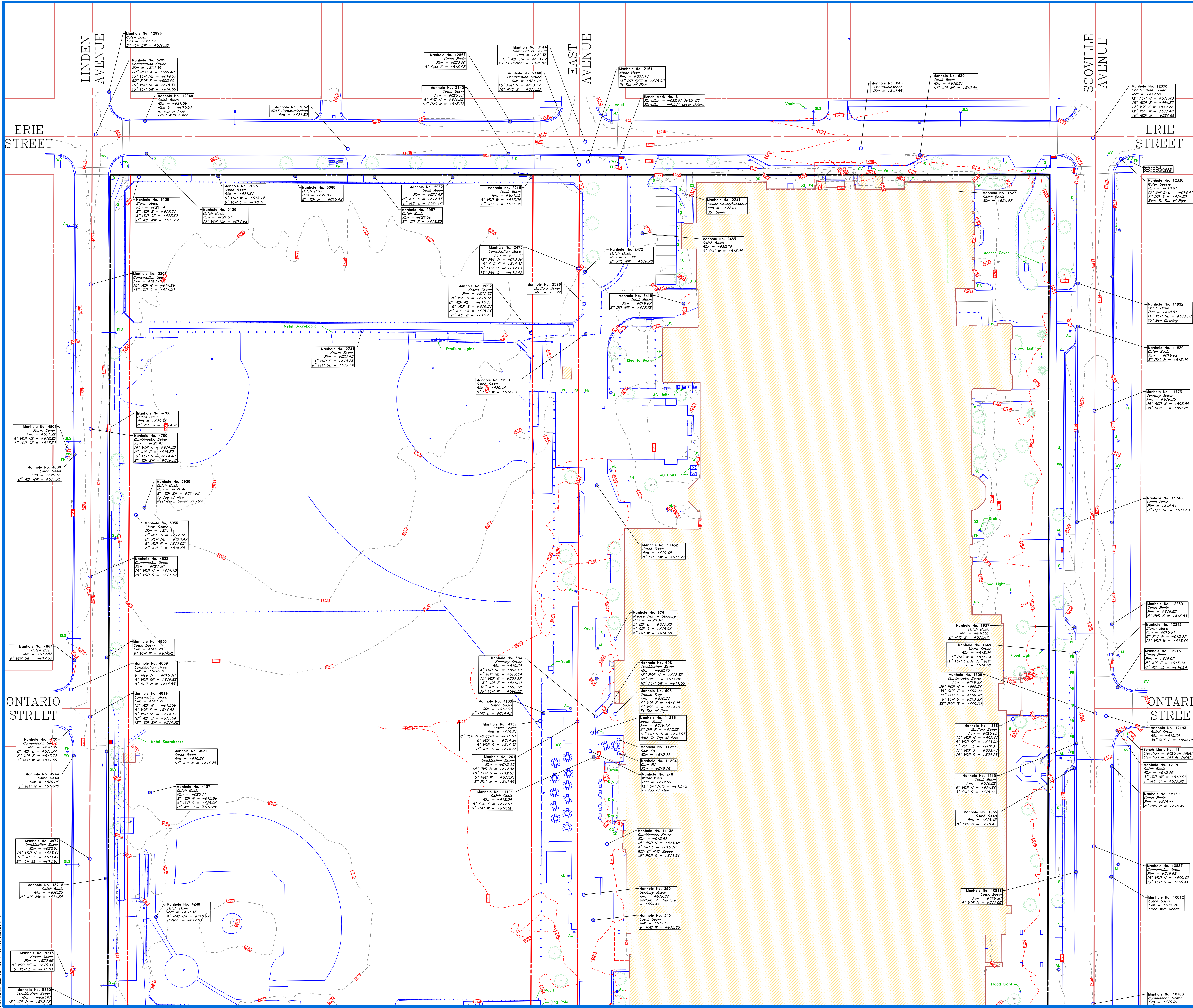
NOTE: UNDERGROUND UTILITIES SHOWN HEREON, HAVE BEEN PLOTTED WITH THE AID OF AVAILABLE RECORDS. FOR LOCATIONS OF UNDERGROUND UTILITY MAINS, PLEASE CONTACT J.U.L.I.E. BY CALLING 811 OR 1-800-892-0123.

COMPARE ALL POINT BEFORE BUILDING BY SAME AND AT ONCE REPORT ANY DIFFERENCE. FOR BUILDING LINE AND OTHER RESTRICTIONS NOT SHOWN HEREON REFER TO YOUR CONTRACT (DEED), TITLE INSURANCE POLICY AND ZONING ORDINANCE. BASIS OF BEARINGS SHOWN HEREON HAVE BEEN ASSUMED.

"THIS PROFESSIONAL SERVICE CONFORMS TO THE CURRENT ILLINOIS MINIMUM STANDARDS FOR TOPOGRAPHIC SURVEYS."

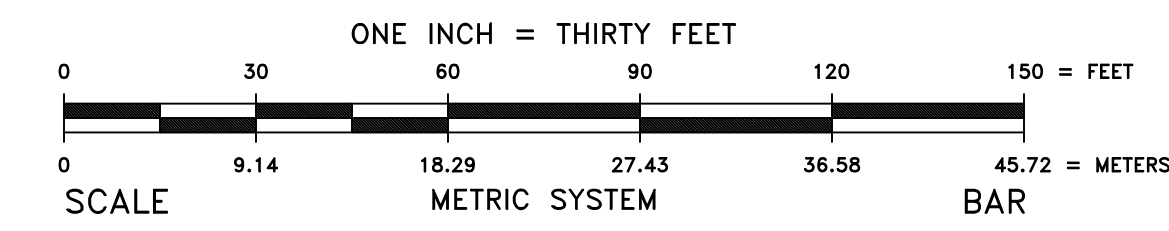
DATE	REVISION	MARK
REVISION SCHEDULE		
SHEET: 5 of 7		
DATE: JULY 12, 2022		
SCALE: ONE INCH = THIRTY FEET		
ORDER NO.: 19-16630 "A"		
ORDERED BY: HIGH SCHOOL DISTRICT 200		
TOPOGRAPHIC SURVEY Prepared By MARCHESE AND SONS, Inc. <i>land - marine - construction surveys</i> Design Firm No. 184-002782 10 Monaco Drive Roselle, Illinois 60172 Phone: (630) 894-5680 FAX: (630) 894-8869		

DATE PLOTTED: 08/01/2022 10:00 AM



LEGEND

- = AREA LIGHT (AL)
- = CATCH BASIN (CB)
- = CONCRETE PARKING BUMPER
- = CURB DRAIN (CD)
- = FIRE HYDRANT (FH)
- = GAS METER (GM)
- = HANDICAPPED PARKING SPACE
- = MANHOLE COVER (MH)
- = MONITOR WELLS (MW)
- = OVERHEAD WIRES (OHW)
- = PIPE BOLLARD (PB)
- = SIGN (S)
- = STREET LIGHT STANDARD (SLS)
- = TRAFFIC CONTROL LIGHT (TCL)
- = WATER VALVE (WV)
- = WOOD SERVICE POLE (WSP)
- = TREE
- = EVERGREEN TREE
- = PROPERTY BOUNDARY
- = PARCEL LINES
- = EASEMENTS



NOTE: UNDERGROUND UTILITIES SHOWN HEREON, HAVE BEEN PLOTTED WITH THE AID OF AVAILABLE RECORDS. FOR LOCATIONS OF UNDERGROUND UTILITY MAINS, PLEASE CONTACT J.U.L.I.E. BY CALLING 811 OR 1-800-892-0123.

COMPARE ALL POINT BEFORE BUILDING BY SAME AND AT ONCE REPORT ANY DIFFERENCE. FOR BUILDING LINE AND OTHER RESTRICTIONS NOT SHOWN HEREON REFER TO YOUR CONTRACT, DEED, TITLE INSURANCE POLICY AND ZONING ORDINANCE. BASIS OF BEARINGS SHOWN HEREON HAVE BEEN ASSUMED.

"THIS PROFESSIONAL SERVICE CONFORMS TO THE CURRENT ILLINOIS MINIMUM STANDARDS FOR TOPOGRAPHIC SURVEYS."

DATE	REVISION	MARK

REVISION SCHEDULE

SHEET: 6 of 7

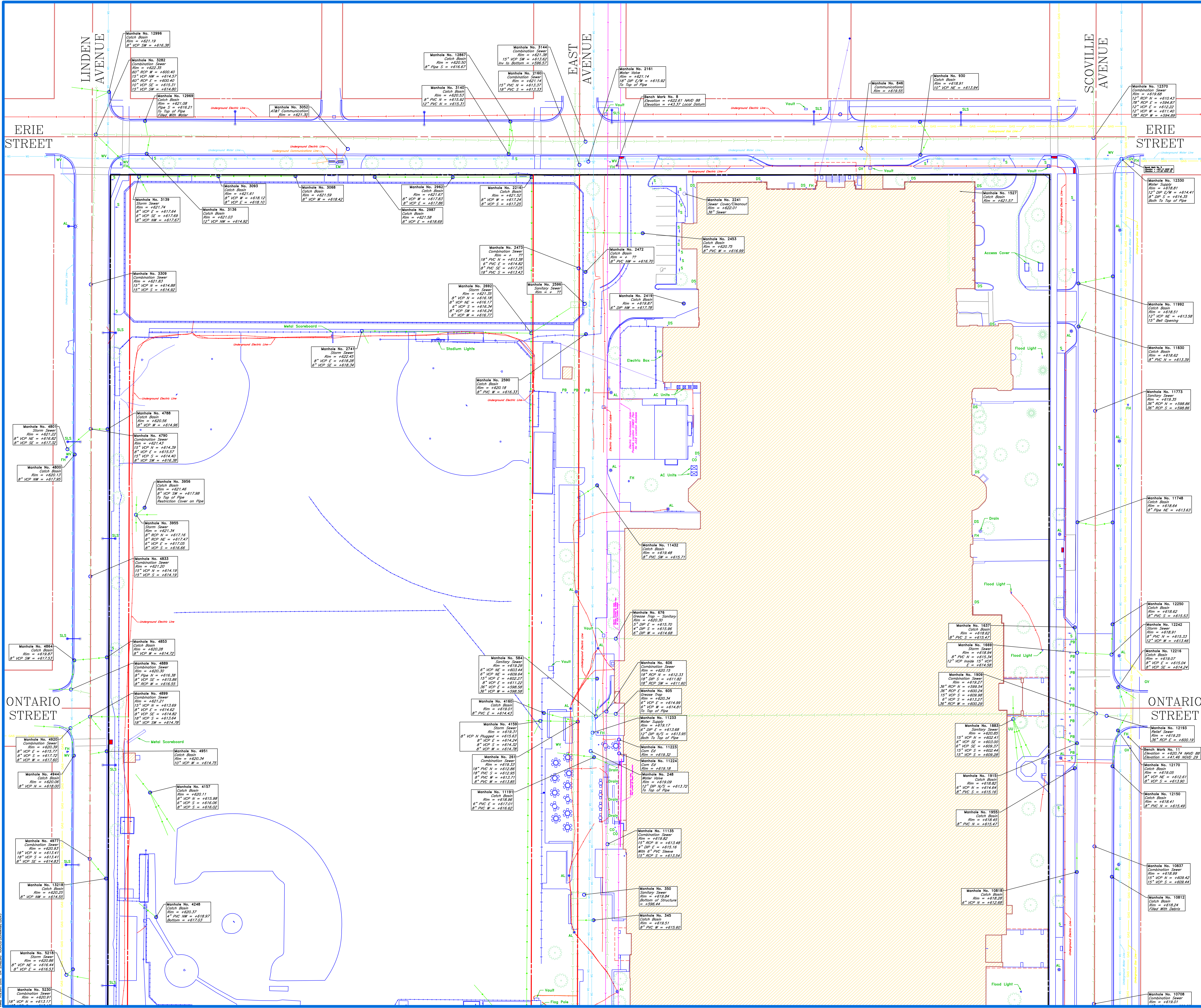
DATE: JULY 12, 2022

SCALE: ONE INCH = THIRTY FEET

ORDER NO.: 19-16630 "A"

ORDERED BY: HIGH SCHOOL DISTRICT 200

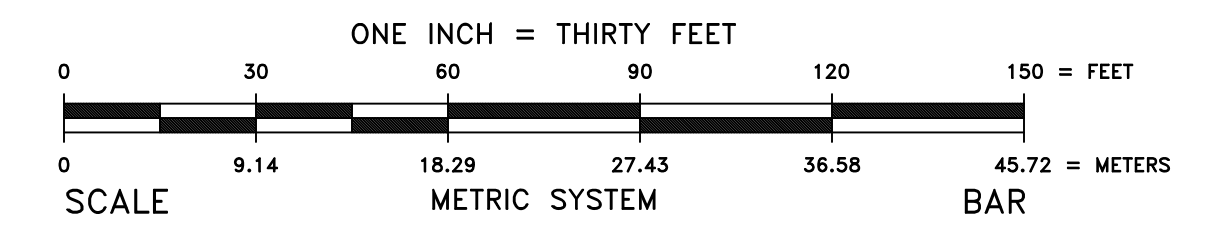
TOPOGRAPHIC SURVEY
 Prepared by
MARCHESE AND SONS, Inc.
land - marine - construction surveys
 Design Firm No. 184-002762
 10 Monaco Drive Roselle, Illinois 60172 Phone: (630) 894-5680 FAX: (630) 894-8869



LEGEND

- AREA LIGHT (AL)
- CATCH BASIN (CB)
- ▭ CONCRETE PARKING BUMPER
- ▭ CURB DRAIN (CD)
- FIRE HYDRANT (FH)
- GAS METER (GM)
- HANDICAPPED PARKING SPACE
- MANHOLE COVER (MH)
- MONITOR WELL (MW)
- OVERHEAD WIRES (OHW)
- PIPE BOLLARD (PB)
- SIGN (S)
- STREET LIGHT STANDARD (SLS)
- TRAFFIC CONTROL LIGHT (TCL)
- WATER VALVE (WV)
- WOOD SERVICE POLE (WSP)
- TREE
- EVERGREEN TREE
- ▭ PROPERTY BOUNDARY
- ▭ PARCEL LINES
- ▭ EASEMENTS

North



NOTE: UNDERGROUND UTILITIES SHOWN HEREON, HAVE BEEN PLOTTED WITH THE AID OF AVAILABLE RECORDS. FOR LOCATIONS OF UNDERGROUND UTILITY MAINS, PLEASE CONTACT J.U.L.I.E. BY CALLING 811 OR 1-800-892-0123.

COMPARE ALL POINT BEFORE BUILDING BY SAME AND AT ONCE REPORT ANY DIFFERENCE. FOR BUILDING LINE AND OTHER RESTRICTIONS NOT SHOWN HEREON REFER TO YOUR CONTRACT, DEED, TITLE INSURANCE POLICY AND ZONING ORDINANCE. BASIS OF BEARINGS SHOWN HEREON HAVE BEEN ASSUMED.

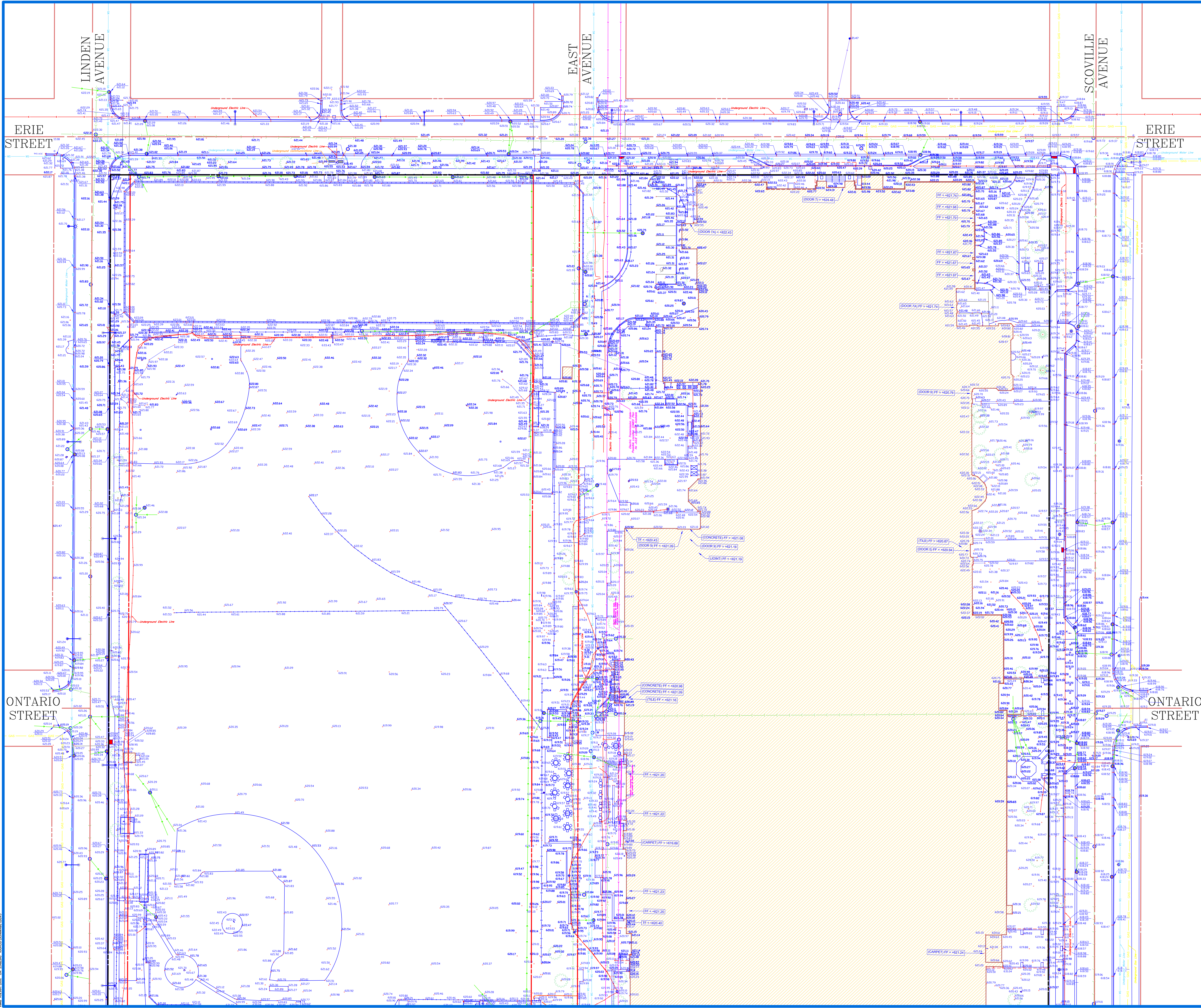
"THIS PROFESSIONAL SERVICE CONFORMS TO THE CURRENT ILLINOIS MINIMUM STANDARDS FOR TOPOGRAPHIC SURVEYS."

DATE	REVISION	MARK
REVISION SCHEDULE		

SHEET: 6 of 7
DATE: JULY 12, 2022
SCALE: ONE INCH = THIRTY FEET
ORDER NO.: 19-16630 "A"
ORDERED BY: HIGH SCHOOL DISTRICT 200

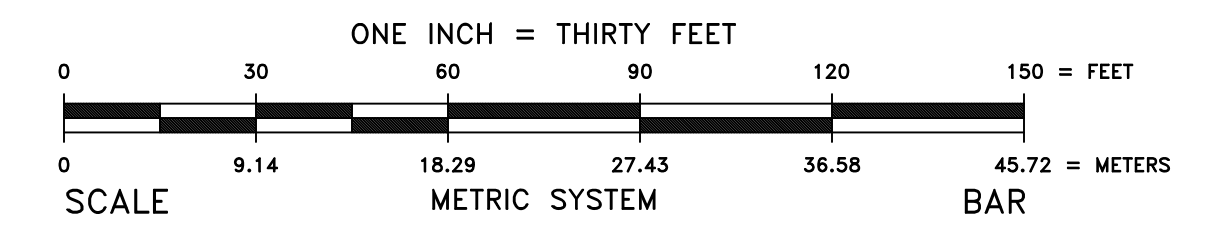
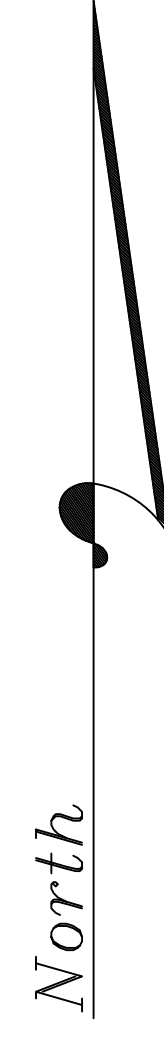
TOPOGRAPHIC SURVEY
Prepared By
MARCHESE AND SONS, Inc.
land - marine - construction surveys
Design Firm No. 184-002762
10 Monaco Drive Roselle, Illinois 60172 Phone: (630) 894-5680 FAX: (630) 894-8869

DATE PLOTTED: 07/12/2022 10:00:00 AM



LEGEND

- = AREA LIGHT (AL)
- = CATCH BASIN (CB)
- ▭ = CONCRETE PARKING BUMPER
- ▭ = CURB DRAIN (CD)
- ⊕ = FIRE HYDRANT (FH)
- ⊕ = GAS METER (GM)
- ♿ = HANDICAPPED PARKING SPACE
- = MANHOLE COVER (MH)
- = MONITOR WELL (MW)
- = OVERHEAD WIRES (OHW)
- ⊕ = PIPE BOLLARD (PB)
- ⊕ = SIGN (S)
- = STREET LIGHT STANDARD (SLS)
- = TRAFFIC CONTROL LIGHT (TCL)
- = WATER WELL (WW)
- ⊕ = WOOD SERVICE POLE (WSP)
- = TREE
- = EVERGREEN TREE
- = PROPERTY BOUNDARY
- = PARCEL LINES
- = EASEMENTS



NOTE: UNDERGROUND UTILITIES SHOWN HEREON, HAVE BEEN PLOTTED WITH THE AID OF AVAILABLE RECORDS. FOR LOCATIONS OF UNDERGROUND UTILITY MAINS, PLEASE CONTACT J.U.L.I.E. BY CALLING 811 OR 1-800-892-0123.

COMPARE ALL POINT BEFORE BUILDING BY SAME AND AT ONCE REPORT ANY DIFFERENCE. FOR BUILDING LINE AND OTHER RESTRICTIONS NOT SHOWN HEREON REFER TO YOUR CONTRACT, DEED, TITLE INSURANCE POLICY AND ZONING ORDINANCE. BASIS OF BEARINGS SHOWN HEREON HAVE BEEN ASSUMED.

"THIS PROFESSIONAL SERVICE CONFORMS TO THE CURRENT ILLINOIS MINIMUM STANDARDS FOR TOPOGRAPHIC SURVEYS."

DATE	REVISION	MARK
REVISION SCHEDULE		
SHEET: 7 of 7		
DATE : JULY 12, 2022		
SCALE : ONE INCH = THIRTY FEET		
ORDER NO.: 19-16630 "A"		
ORDERED BY : HIGH SCHOOL DISTRICT 200		
TOPOGRAPHIC SURVEY <i>Performed By</i> MARCHESE AND SONS, Inc. <i>Design Firm No. 184-002762</i> <i>land - marine - construction surveys</i> 10 Monaco Drive Roselle, Illinois 60172 Phone : (630) 894-5680 FAX : (630) 894-8869		

JULIE