



October 23, 2020

**COVID-19 Status Report
Oak Park Village Board of Trustees**

To: Village President and Village Board of Trustees

Fr: Cara Pavlicek, Village Manager

The memo is a means to share a brief summary of information regarding Village of Oak Park operational activities in response to COVID-19. In most cases, formal public guidance or employee guidance has been publicly disseminated via the Village website or Village social media channels.

New Public Health Guidance

The Village of Oak Park Department of Public Health received notification of the following new COVID-19 cases; since last reported:

<u>Date</u>	<u># of Cases</u>	<u>Age of Cases</u>
October 22 (Thursday)	10	<20 to 70s
October 23 (Friday)	11	<20 to 70s

Excluding individuals for which street addresses are not yet determined, the State of Illinois reports a total of eight hundred fifty-nine (859) total Oak Park COVID-19 cases. It is important to note that as patient tracking and case follow-up occurs, individuals listed within the number of Oak Park cases reported may change depending on residency confirmation.

The Oak Park Department of Public Health is notified of positive tests as established by state and local public health protocol. Because of privacy laws, no additional information can be released about the individuals. It is noted, that privacy precludes location information regarding individuals tested to anyone other than Public Health Officials and First Responders.

The Oak Park Department of Public Health is working closely with officials from the Illinois Department of Public Health (IDPH), investigating and notifying anyone who may have had exposure to the individual who tested positive for COVID-19. Local public health officials, hospitals and first responders are following protocols consistent with the latest guidance from the Centers for Disease Control and Prevention (CDC).

Cases related to Long-Term Care and Assisted Living Facilities

Public Health Director Charley reports updates the chart below, including two new staff member cases are reported at the Oak Park Oasis, 625 N Harlem.

Also, the thirty-second (32) death of an Oak Park resident believed to be related to the COVID-19 coronavirus has been reported. The fatality is a 102 year old female residing at a long-term care facility. Director Charley expressed his sincere condolences to the resident’s friends and families for the loss of their loved one.

Facility Name	# of Resident Cases	# of Resident Deaths	# of Staff Cases
Belmont Village of Oak Park	2	3	6
Berkeley Nursing & Rehab Center	4	3	1
Brookdale Oak Park	8	1	14
Oak Park Arms	6	1	4
Oasis of Oak Park	23	12	8

County Level Criteria and Metrics

Public Health Director Charley has reported that the Illinois Department of Public Health (IDPH) continually is monitoring key indicators to identify early but significant increases of COVID-19 transmission in Illinois, potentially signifying resurgence in each Illinois county. Oak Park is part of Suburban Cook County and currently considered “BLUE” which indicates that the county is experiencing overall stable COVID-19 metrics.

However, during the past week, Oak Park has seen significant growth in COVID-19 rates and the Public Health Director notes the current positivity rate for the Cook region is 7.3% and has been increasing steadily recently. Today, Oak Park’s seven day rolling average for confirmed cases is 10 – one week ago, it was half that at 5 confirmed daily cases.

In the event, the Cook County region experiences three consecutive days of positivity rate at or above 8%, it is possible that as early as Wednesday, October 28, the Cook County region and Oak Park could be classified as “ORANGE” which is considered a warning level and trigger a ten-day period of evaluation of multiple resurgence criteria and metrics prior to tier 1 mitigation requirements being imposed by the State in suburban Cook County, Region 10, including Oak Park. These new mitigation requirements will directly affect bars, restaurants and meetings and/or social gatherings. The imposed mitigation measures will likely include such requirements as no indoor bar/restaurant service, bars and restaurants closing at 11:00 pm and limiting social gatherings to 25 guests.

Everyone is reminded to follow all COVID-19 safety measures such as social distancing, hand-washing and the use of face coverings and limit the size of any gathering.

Public Health Data

Public Health Director Charley has shared the following data related to COVID-19.

“New cases per 100,000 People”. This metric looks at the number of recent COVID-19 cases per 100,000 people to describe the potential number of people who are currently ill and may be infectious. This is the number of new cases reported by IDPH in the previous week. Calculated as a rate = [Village of Oak Park case count for 7 days] / [Village population] x100,000.

- Oak Park rate: 134/100,000
- Cook County rate: 188/100,000 10/11 through 10/17
- Target for County-level data: Cases for the week are fewer than 10 or the rate is fewer than 50 cases per 100,000 people
- Warning for County-level data: New case rate is greater than 50 cases per 100,000 people

All Cases through 10/23/2020

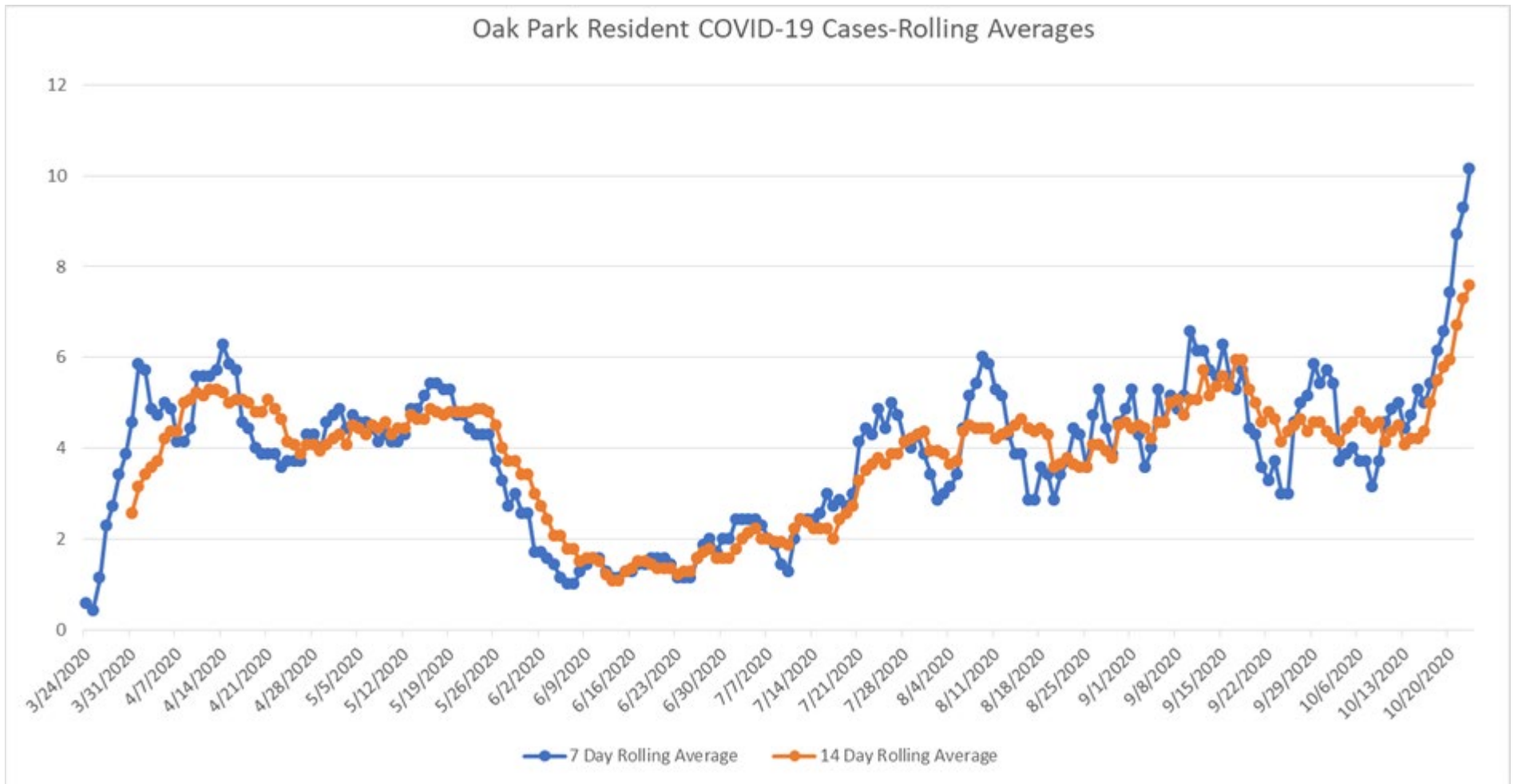
Age Range	Total	% of Cases
0-4	15	1.7%
4-13	30	3.5%
14-19	87	10.1%
20-29	159	18.5%
30-39	137	15.9%
40-49	134	15.6%
50-59	127	14.8%
60-69	79	9.2%
70-79	58	6.8%
80-89	26	3.0%
90-99	7	0.8%
Total	859	

Number and percent of cases prior to July 1 and July 1 and after.

Age Range	<07/01/20	% of Cases
0-4	3	0.9%
5-13	4	1.2%
14-19	6	1.7%
20-29	50	14.5%
30-39	57	16.5%
40-49	59	17.1%
50-59	58	16.8%
60-69	44	12.8%
70-79	34	9.9%
80-89	23	6.7%
90-99	7	2.0%
Total	345	

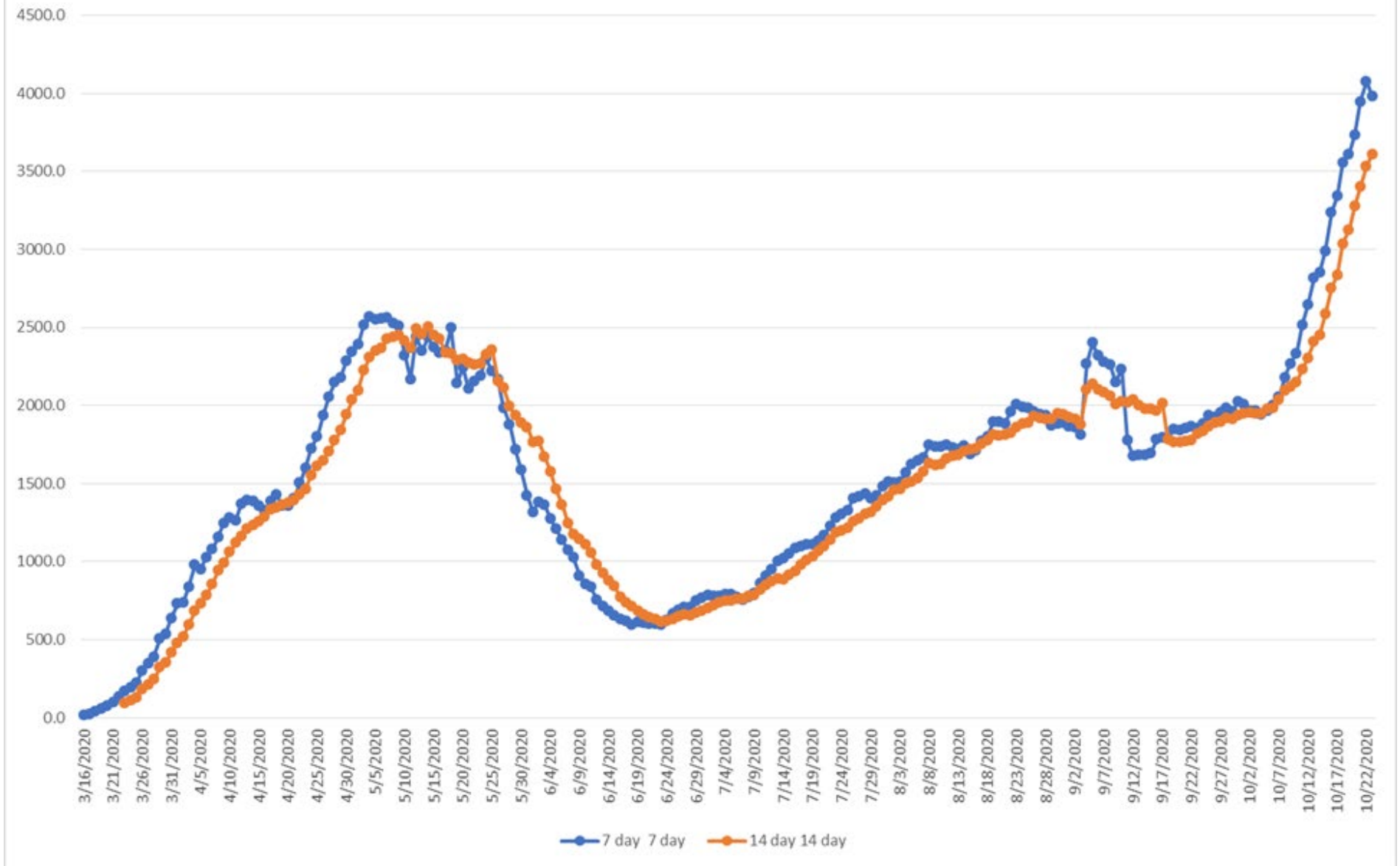
Age Range	>=07/01/20	% of Cases
0-4	12	2.3%
5-13	26	5.1%
14-19	81	15.8%
20-29	109	21.2%
30-39	80	15.6%
40-49	75	14.6%
50-59	69	13.4%
60-69	35	6.8%
70-79	24	4.7%
80-89	3	0.6%
90-99	0	0.0%
Total	514	

Age Range	% of Cases <07/01/20	% Cases >=07/01/2020	Calculated Difference	% difference
0-4	0.9%	2.3%	1.5%	91.4
5-13	1.2%	5.1%	3.9%	125.4
14-19	1.7%	15.8%	14.0%	160.2
20-29	14.5%	21.2%	6.7%	37.6
30-39	16.5%	15.6%	-1.0%	-6.0
40-49	17.1%	14.6%	-2.5%	-15.8
50-59	16.8%	13.4%	-3.4%	-22.4
60-69	12.8%	6.8%	-5.9%	-60.8
70-79	9.9%	4.7%	-5.2%	-71.4
80-89	6.7%	0.6%	-6.1%	-167.8
90-99	2.0%	0.0%	-2.0%	-200.0



Oak Park: 7 & 14 Day Rolling Averages: 7 day is 10 and 14 day 7.5

State of Illinois-COVID-19 Cases-Rolling Averages



State of Illinois: 7 & 14 Day Rolling Averages: 7 day is 3,980 and 14 day 3,609

10/23/2020