

Dementia Friendly Community Kickoff Event

- **Welcome and Overview**
- **Dementia Friendly America/Dementia Friendly Illinois – Dr. Raj C. Shah**
- **Panel of Local Leaders**
- **Panel of “Lived Experience”**
- **How to Meet DFA Readiness and Recognition Criteria**
- **Break-Out Group Sessions**
- **First Action Team Meeting – November 6th at 2:00 p.m.**

Dementia Friendly America/ Dementia Friendly Illinois



Dementia
Friendly
America.®

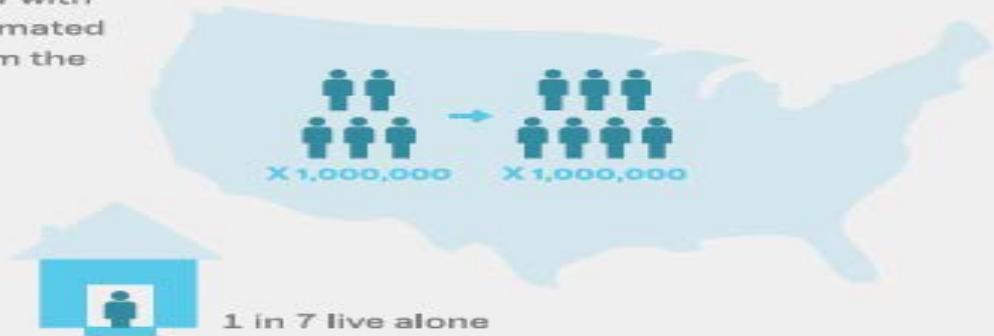
The Growing Need

Impact on persons with disease and caregivers

By 2025, the number of people age 65 and older with Alzheimer's disease and other dementias is estimated to reach 7.1 million — a 40 percent increase from the 5.1 million age 65 and older affected in 2015¹



Nearly 60% of people with dementia live in their own community homes



Caregivers and families

In 2014 caregivers provided 17.9 billion hours of unpaid care, averaging 22 hours per week and valued at \$217.7 billion annually

The physical and emotional impact of dementia caregiving is estimated to have resulted in \$9.7 billion in health care costs in the United States in 2014

85%

of all unpaid help provided to those with dementia comes from family members



Business

\$34 billion annually is lost in revenue/productivity due to caregiving responsibilities²



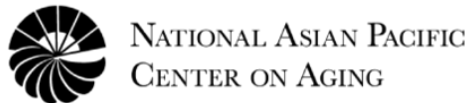
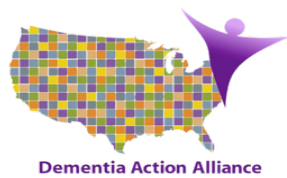
Cost to U.S. Society

- Total (estimated) payments in 2015 for Alzheimer's disease and related dementias: \$226 billion

Response to the Need: Dementia Friendly Community



DFA National Participants



ABA | Bank of America | CFPB | Eli Lilly | The Global CEO Initiative | The IACP
NACo | World Young Leaders

Federal Liaisons: ACL, ASPE, CDC, HRSA, IHS, SS55A

Organizing to Meet the Goal: Web-based Tools and Resources

**Communities where all people
can live, age and thrive**

[LEARN MORE](#)



The Dementia Friendly America tools and resources help communities work toward dementia friendliness.

[Access Our Tools & Resources](#)



The Dementia Friendly America initiative is on a mission to catalyze a nationwide movement to foster dementia friendliness.

[Discover More About This Initiative](#)



Communities across the country are working to support those with cognitive impairment and their care partners. Is yours ready?

[Learn How To Join Us On The Map](#)

Our website includes sector guides, provider tools, a community toolkit and other guidance for communities working towards becoming dementia friendly.

Alignment with Age-Friendly



Age and Dementia Friendly Communities

Since age is the greatest risk factor for dementia, communities working towards age-friendly resources may want to consider adding dementia friendly elements to their efforts. The list below, shows dementia friendly elements that communities may want to consider adding to their age-friendly efforts

Age Friendly	Dementia Friendly	Features
✓		The city is clean and pleasant, with enforced regulations.
	✓	The environment is familiar (the functions of buildings are obvious) and distinctive (urban and building form is varied).
	✓	The physical environment is easy to navigate and includes a variety of landmarks to aid wayfinding.
✓		A spectrum of quality housing options, including support for aging in place, is available for older people as their needs change over time.
	✓	A range of quality housing options, including memory care services and supports, exists for people with dementia at various stages of the disease.
✓		A wide-variety of affordable, convenient and accessible activities is offered to older adults and their companions.
	✓	People with dementia and their caregivers have access to organized activities designed specifically for their needs.
✓		Public transport is reliable, frequent, safe and affordable; serves all city areas; and has priority seating for older adults.
	✓	Transport does not require passengers to handle money, and supportive assistance is available along the way to help passengers with dementia travel successfully
✓		Drivers (public transport, taxis, other services) are courteous and sensitive to older riders.
	✓	Drivers are trained to recognize passengers with dementia and how to help them.
✓		Roads are well-maintained, well-lit, and well-signed, and priority parking and drop-off spots are readily available.
	✓	Transportation services for people with dementia are well-advertised and promoted as supportive.
✓		Older people are valued and respected by the community
	✓	Community is dementia-aware and puts forth a spirit of support; people with dementia, including those from seldom-heard communities, are free from stigma.
✓		Older people receive services and products adapted to their needs and preferences.

RESEARCH REPORT

MARCH 2016

Better Together: A Comparative Analysis of Age-Friendly and Dementia Friendly Communities

Natalie Turner and Lydia Morken

Community Web-Based Resource



Taking an All Sectors Approach

Every part of community has a unique role in contributing to dementia friendliness



Dementia Friendly Essentials



Banks and Financial Services



Neighbors and Community Members



Legal and Advance Planning Services



Government, Community, and Mobility Planning



Health Care Throughout the Continuum



Independent Living



Communities of Faith



Businesses



Government: Emergency Planning and Response



Memory Loss Supports and Services



Additional Guide Resources

Example Sector Guide



Dementia-Friendly Financial Services

Financial services professionals may note early symptoms of dementia in clients such as difficulty managing finances. Dementia-friendly practices can help to balance and protect client independence and interests from problems such as unpaid expenses, squandered resources, avoidable guardianship, and financial abuse, neglect, or exploitation.

Dementia-friendly business is good business and will retain existing clients and attract new ones. Access training at Home Instead Business Training.⁹



Ready to implement dementia-friendly practices?
Follow the steps:

1

Prepare

- Recognize signs of dementia related to money management and signs of financial abuse or harm.
- Develop proactive procedures and guidelines to address financial challenges related to dementia.

2

Learn

- Learn to use dementia-friendly communication skills.
- Know local services that help people with dementia and their caregivers.

3

Respond

- Appoint champions at the senior level to sustain overall initiative and within branches and call centers as “go-to resources.”
- Provide dementia-friendly products, services, and customer service practices.
- Spread dementia-friendly principles throughout the industry and community.

- Business
- Banks and financial
- Community-based supports
- Faith communities
- Health and long term care
- Legal and advance planning
- Local government (planning, emergency response, law enforcement)
- Neighbor and community members

Dementia Friendly Illinois: Rationale

Building dementia friendly communities is of significant importance to the Illinois families and persons living with or at risk for dementia.



Dementia Friendly Illinois: Rationale

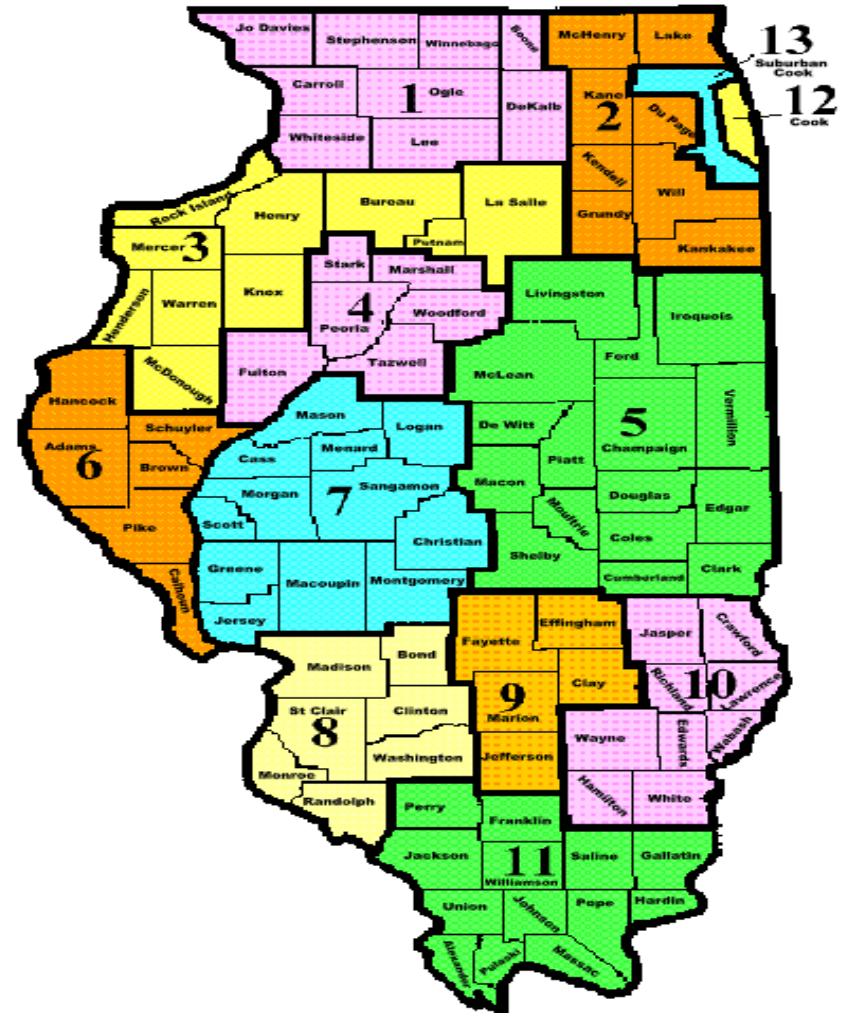
- Approximately 230,000 people in Illinois have dementia due to Alzheimer's disease.
- By 2025 the number will increase to 260,000 people.
- Each person with dementia has multiple informal caregivers so another 588,000 Illinois residents are impacted by dementia due to Alzheimer's.

Dementia Friendly Illinois: Rationale

- Every one of these individuals has to navigate through their communities.
- If they do not feel supported by their community, they start becoming isolated.
- Isolation leads to worsening well-being along with poor physical and mental health.

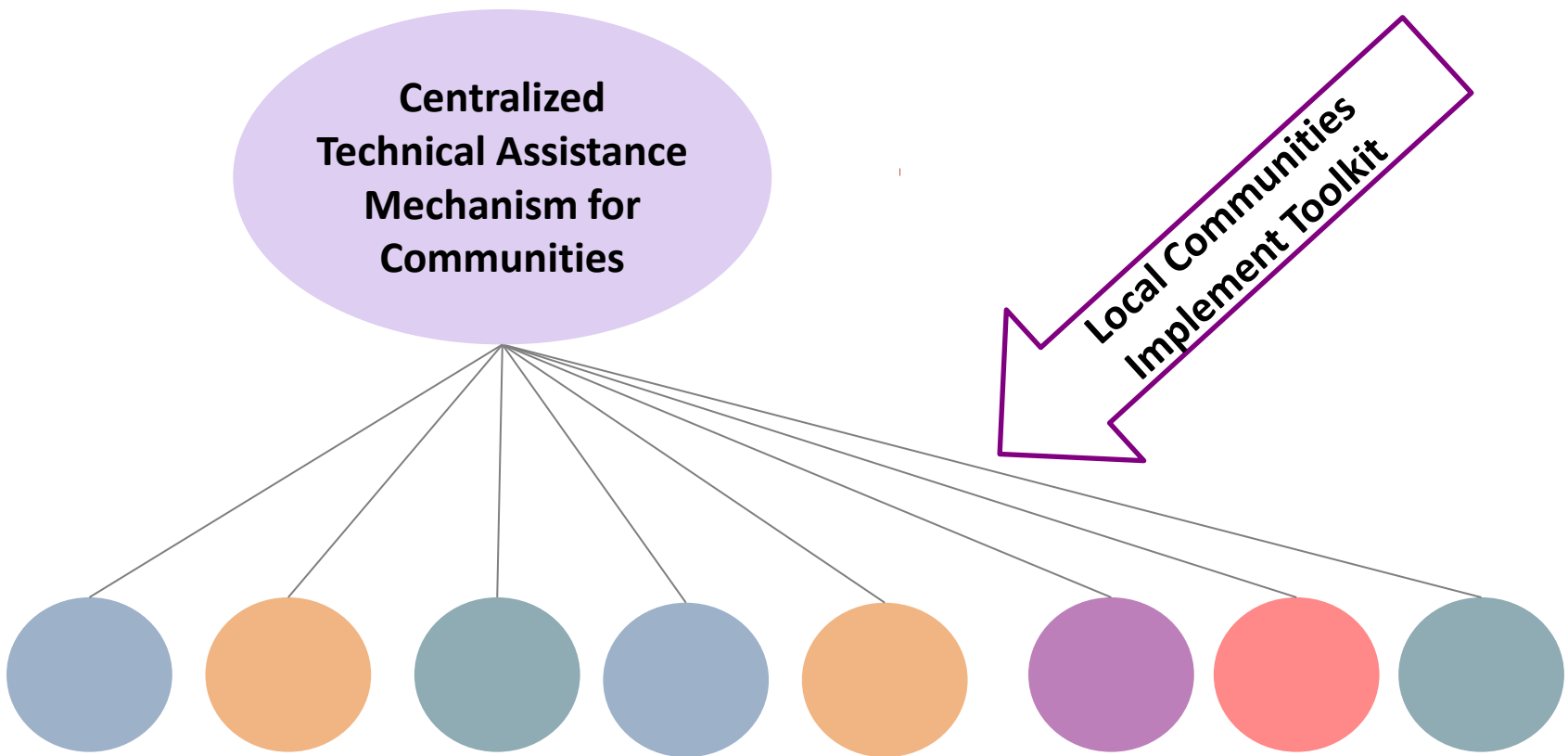
Dementia Friendly Illinois: Goal

To support the recognition of at least one community in each State Planning Service Area as being part of Dementia Friendly America.

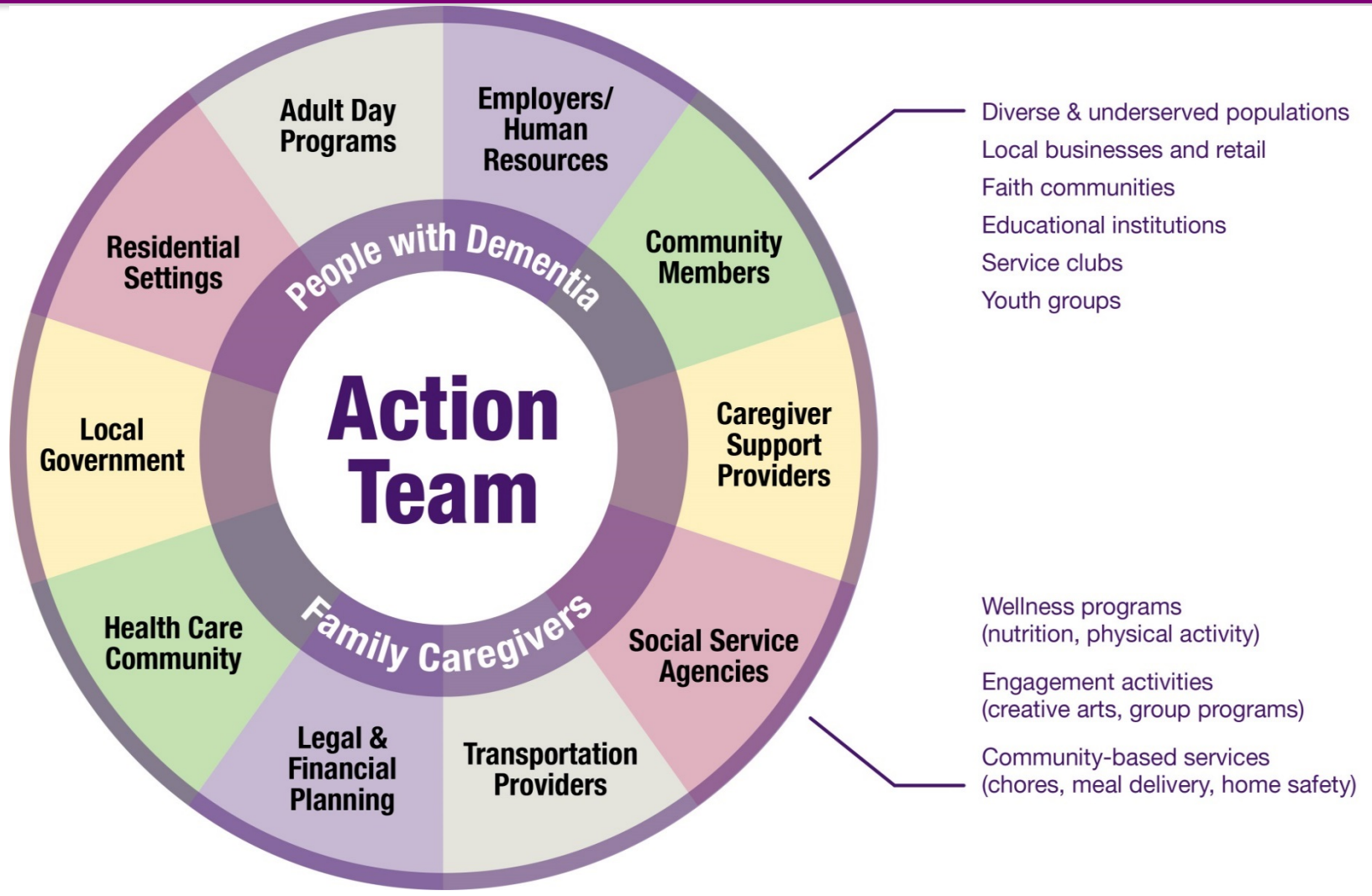


Dementia Friendly Illinois: Approach

Local community activation and toolkit implementation



Dementia Friendly Illinois: The Action Team



Gauging Progress



Community Dementia Friendly Metrics

	Clinical Providers	Home and Community Services	Business Retail/Employers	Legal/Financial Planning
Increased awareness of signs and how to effectively interact <ul style="list-style-type: none"> • Training/understanding on signs of dementia • Training on how to respond effectively based on different professional lenses 	X	X	X	X
Adoption of DF environmental changes (indoor/outdoor) <ul style="list-style-type: none"> • Clear signage • Easy to access and navigate, e.g. wide aisles/clear way finders • Places to sit and rest • High contrast in surfaces with good lighting • Matte finish floors/solid crosswalk lines and even pavement • Designated quiet spaces and enclosed areas • Weather protective shelters and seats for waiting • Easily read maps/guides and appropriate voice prompts/announcements 	X	X	X	X
Adoption of staff and workforce training <ul style="list-style-type: none"> • Dementia specific training on disease • Training on difficult situations and how to prompt • Training on when/how to seek help 	X	X	X	
Adoption of DF responsive systems and processes <ul style="list-style-type: none"> • Sector specialized processes for cognitive impairment • In-person call routing options • Assistive technologies if appropriate • Special times and adapted programs for people with dementia 	X	X	X	X

For more information...



Website: www.ilbrainhealth.org

Contact: info@ilbrainhealth.org



@DFA_IL

Panel of Local Leaders

Anan Abu-Taleb, Mayor, Village of Oak Park

Dr. Raj C. Shah, Associate Professor, Rush University Medical College, Co-Director of the Center for Community Health Equity

Clarmarie Keenan, Supervisor, Oak Park Township

Lance Taylor, Chairperson, Oak Park Aging in Place Commission

Oak Park Demographics

➤ **Total Population in 2017: 52,229**

- 39 = Median Age
- 8.5% = 65 and older (4,439)
- 1.7% = 85 and older (888)
- 65 and Older Living Alone (Approximately 1,001)

➤ **Living with Dementia**

- 65 and older (Approximately 786)
- 85 and older (Approximately 304)

How To Meet DFA Readiness and Recognition Criteria

1. Hold today's Community Meeting
2. Form an Action Team.
3. Connecting Across Sectors.
4. Inclusion and Leadership of People Living with Dementia.
5. Champion Organization and Coordination Capacity.
6. Adoption and Communication of Dementia Friendly Practices and Change Goals.
7. Progress Tracking and Sharing.

Break-Out Group Sessions

Select a Recorder/Reporter to Take Notes

1. Why is Dementia Friendly Oak Park important?
2. What impact does and will dementia have here and in our surrounding communities?
3. Given this information and data, what do we do now and where do we go from here?

Break-Out Group Reports

Report Out Main Observations

Sign Up Card!

If you're interested in joining the Dementia Friendly Oak Park efforts, please fill-out an interest card!

Thank You!

Join Us For the First Action Team Meeting

November 6th at 2p.m.

Oak Park Village Hall

For more information contact:

Tammie Grossman, tgrossman@oak-park.us

Maureen McCarthy, maureen.mccarthy@pdop.org

Pamela Mahn, pmahn@oakparktownship.org

Rob Simmons, rsimmons@oppl.org