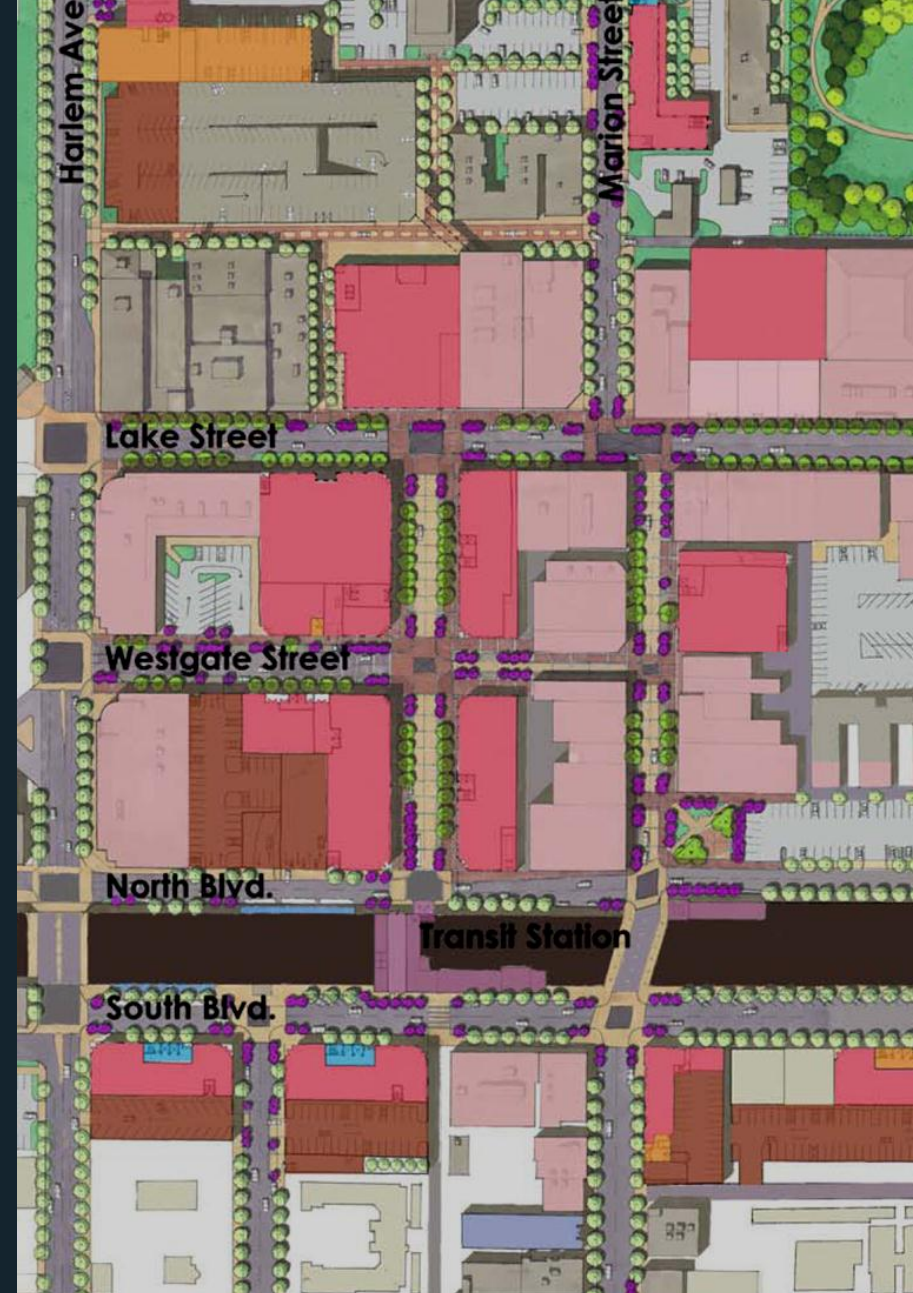


# Greater Downtown Oak Park: Streetscape Planning and Design

Village Board Presentation – March 7, 2011



# PROJECT DESIGN TEAM

- **The Lakota Group**

Urban Planning, Streetscape and  
Landscape Architecture

LAKOTA

- **T.Y. Lin**

Transportation | Complete  
Streets Planning

TY·LIN INTERNATIONAL

- **Terra Engineering**

Civil Engineering



- **Village Staff**

- **Streetscape Design  
Committee**

# STREETSCAPE DESIGN COMMITTEE

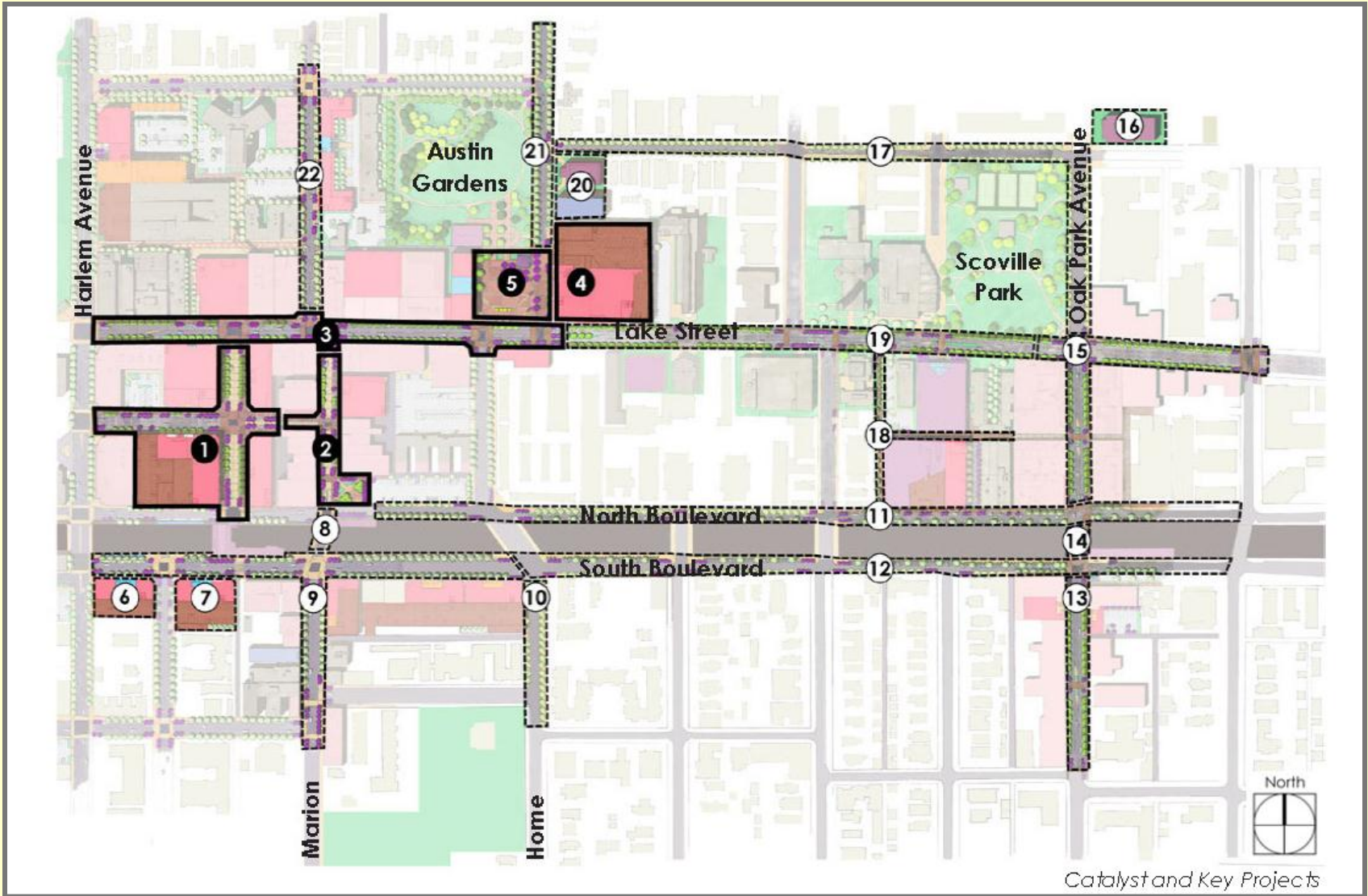
- **Nick Gambino**, Cucina Paradiso
- **Laura Haussman**, Energy & Environment Commission
- **Peter Hugh**, High Lighting Design
- **Bob Loro**, Loro Auto Works
- **Julia Nash**, Flybird
- **Tony Quinn**, Historic Preservation Commission
- **Mary Jo Schuler**, Marion Street Cheese Market
- **Bernie Woytek**, Community Design Commission

# PLANNING AND DESIGN PROCESS

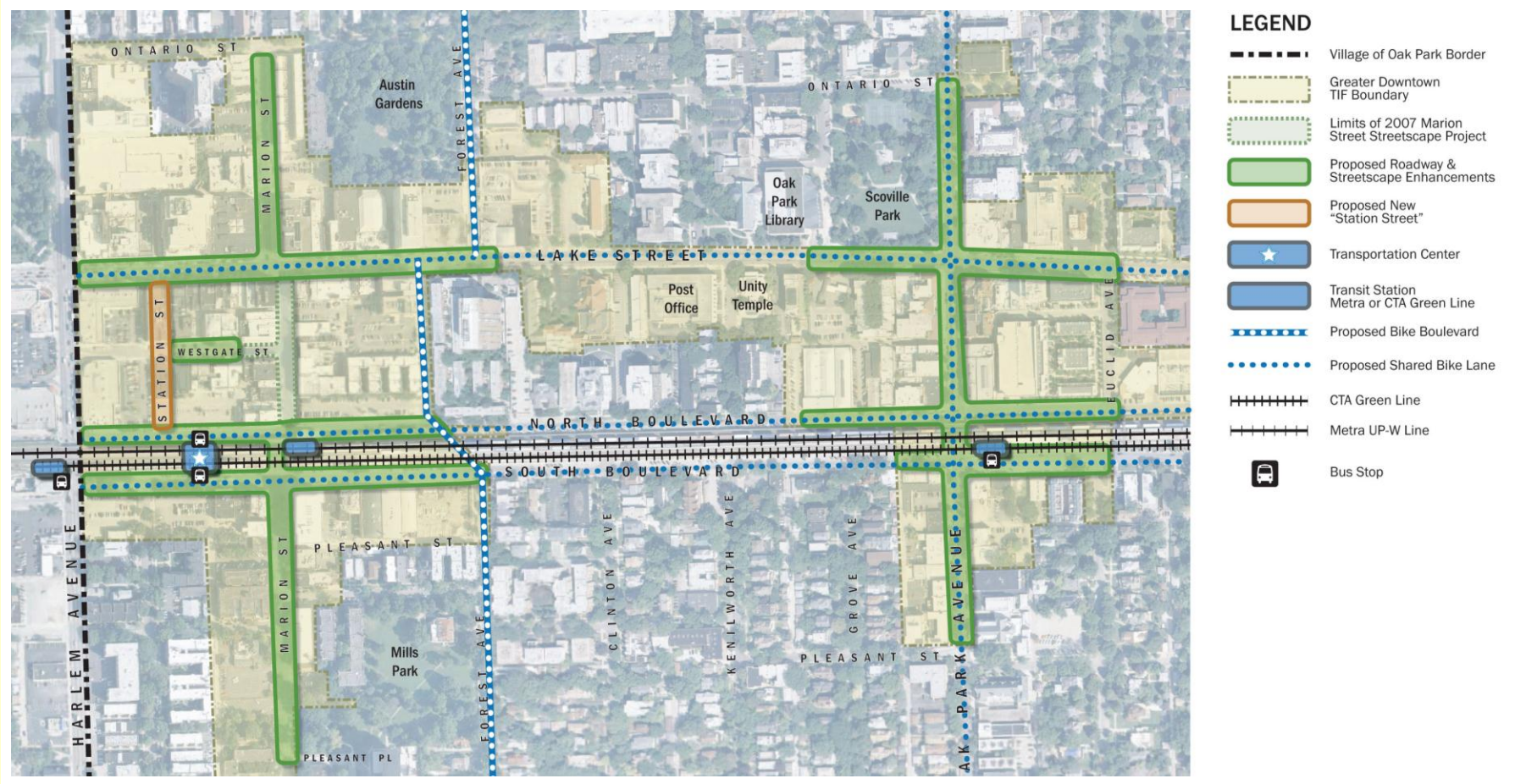
## Greater Downtown Master Plan Initiative

- Building Upon Marion Street Process | Implementation Strategy
- “Design Committee” Planning & Design Process
  - Individual interviews and focus group sessions
  - 8 Weekly team meetings to make design decisions with discussions focusing on:
    - *Necessary underground infrastructure needs*
    - *Essential Streetscape Elements*
    - *High Impact or Target Areas*
    - *General Layouts | Treatments | Opportunities & Constraints*

# GREATER DOWNTOWN OAK PARK: MASTER PLAN



# GREATER DOWNTOWN OAK PARK: STREETScape PROGRAM



# TARGET | STUDY AREAS

- **South Marion Street**

South Boulevard to Pleasant Avenue

- **North Oak Park Avenue**

Lake Street to North Boulevard

- **South Oak Park Avenue**

South Boulevard to Pleasant Avenue

**INSERT AERIAL  
WITH TARGET  
AREAS  
HIGHLIGHTED  
ONLY**

## PROJECT GOALS

- **To extend the new streetscape program throughout the greater Downtown Area.**
- **To effectively and efficiently coordinate needed underground infrastructure improvements with above ground streetscape enhancements.**
- **Improve Greater Downtown Business District aesthetics.**
- **Enhance and improve bicycle and pedestrian facilities.**



# GUIDING PRINCIPLES

## Enhance and Improve ‘Mobility’

- Complete Streets Components
- Pedestrian Friendly
- Transit Supportive Character

## Support Economic Development Initiatives

- Stimulate Private Investment
- Enhance, Strengthen Business Viability
- Increase and Support Tourism Growth

## Maintain and Secure Fiscal Sustainability

- Attract & Retain New Business | Residents
- Enhance & Support Increased Tax Base
- Institute Effective Lifecycle Strategies of Public Infrastructure

# STREETSCAPE FAMILY OF ELEMENTS

- **Continuity of “Streetscape Family of Elements”**
- **With Modifications**
- **Existing Family of Elements**
- **Alternative Materials & Methods**
  - Sustainability
- **Maintenance & Durability**
  - “Life-cycle Strategy

# STREETSCAPE FAMILY OF ELEMENTS

## Pedestrian Paving



# STREETSCAPE FAMILY OF ELEMENTS

## Street Paving



# STREETSCAPE FAMILY OF ELEMENTS

## Street Paving: Alternatives

**INSERT  
ALTERNATIVE  
PAVING MATERIAL  
IMAGE**



# STREETSCAPE FAMILY OF ELEMENTS

## Granite Curb



# STREETSCAPE FAMILY OF ELEMENTS

## Pedestrian Lighting and Lighting Features



# STREETSCAPE FAMILY OF ELEMENTS

## Pedestrian Lighting and Lighting Features: Alternatives

**INSERT  
ALTERNATIVE  
LIGHTING  
IMAGE**

**INSERT  
ALTERNATIVE  
LIGHTING  
IMAGE**



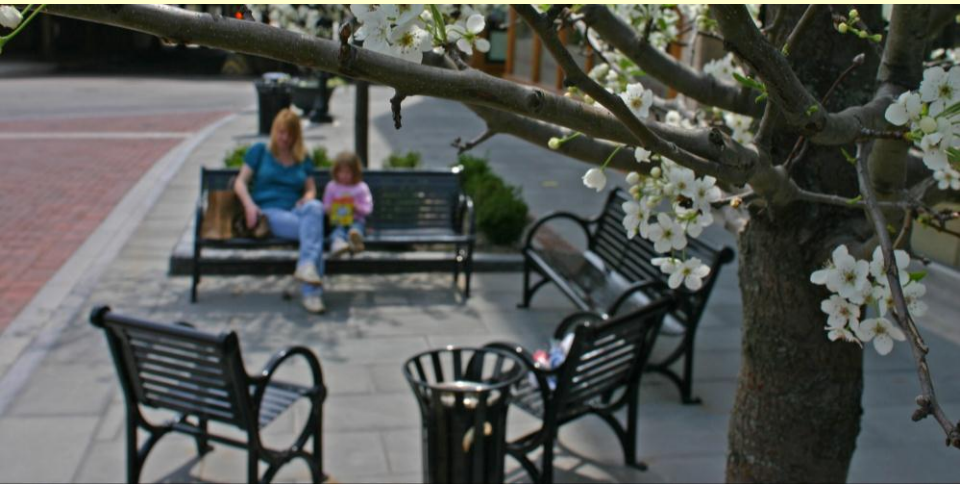
# STREETSCAPE FAMILY OF ELEMENTS

## Planters



# STREETSCAPE FAMILY OF ELEMENTS

## Seating Opportunities



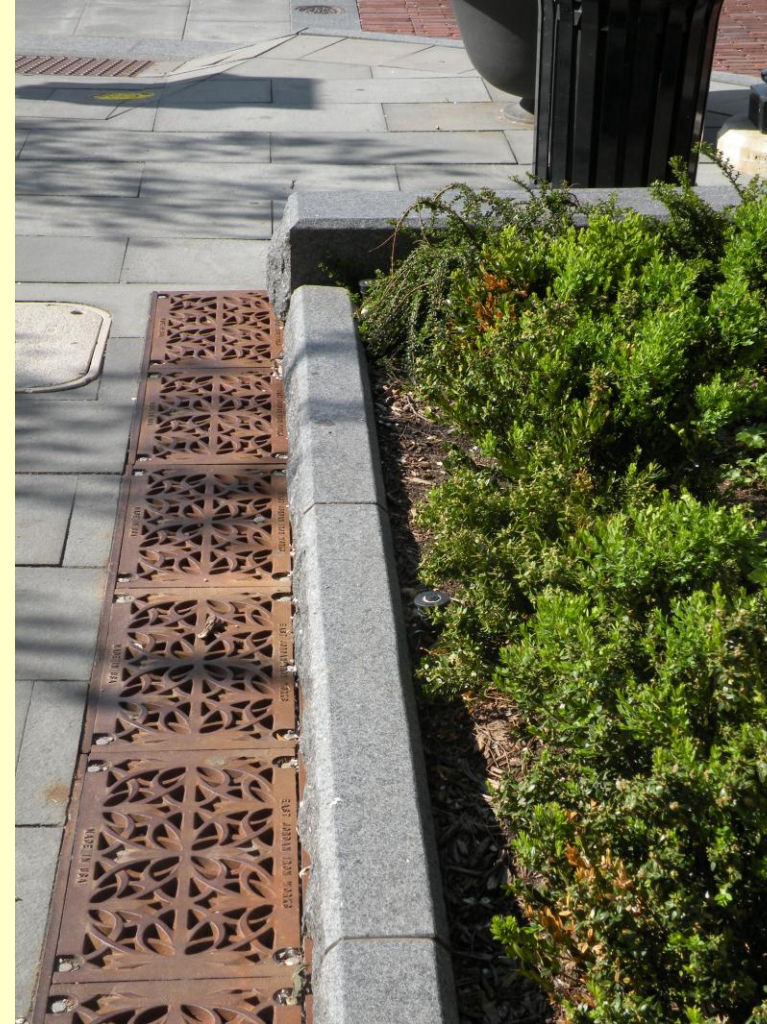
# STREETSCAPE FAMILY OF ELEMENTS

Trash Receptacle | Bench



# STREETSCAPE FAMILY OF ELEMENTS

Tree Grate | Trench Grate



# STREETSCAPE FAMILY OF ELEMENTS

## Bike Racks



# STREETSCAPE FAMILY OF ELEMENTS

## Bike Racks: Alternatives

**INSERT  
ALTERNATIVE BIKE  
RACKS  
IMAGE**

**INSERT  
ALTERNATIVE BIKE  
RACKS  
IMAGE**

# STREETSCAPE FAMILY OF ELEMENTS

## Speed Table

**INSERT SPEED  
TABLE  
IMAGE**

# STREETSCAPE FAMILY OF ELEMENTS

## Signage

**INSERT SIGNAGE  
IMAGE**

**INSERT SIGNAGE  
IMAGE**



TARGET | STUDY AREAS

# SOUTH MARION STREET: Existing Conditions



**INSERT EXISTING  
CONDITIONS PHOTO**

**INSERT EXISTING  
CONDITIONS PHOTO**

**\*Targeted Underground Utility Replacement  
Needed**

# SOUTH MARION STREET: Existing Conditions



## On-Street Parking Spaces

Existing: 25 Spaces

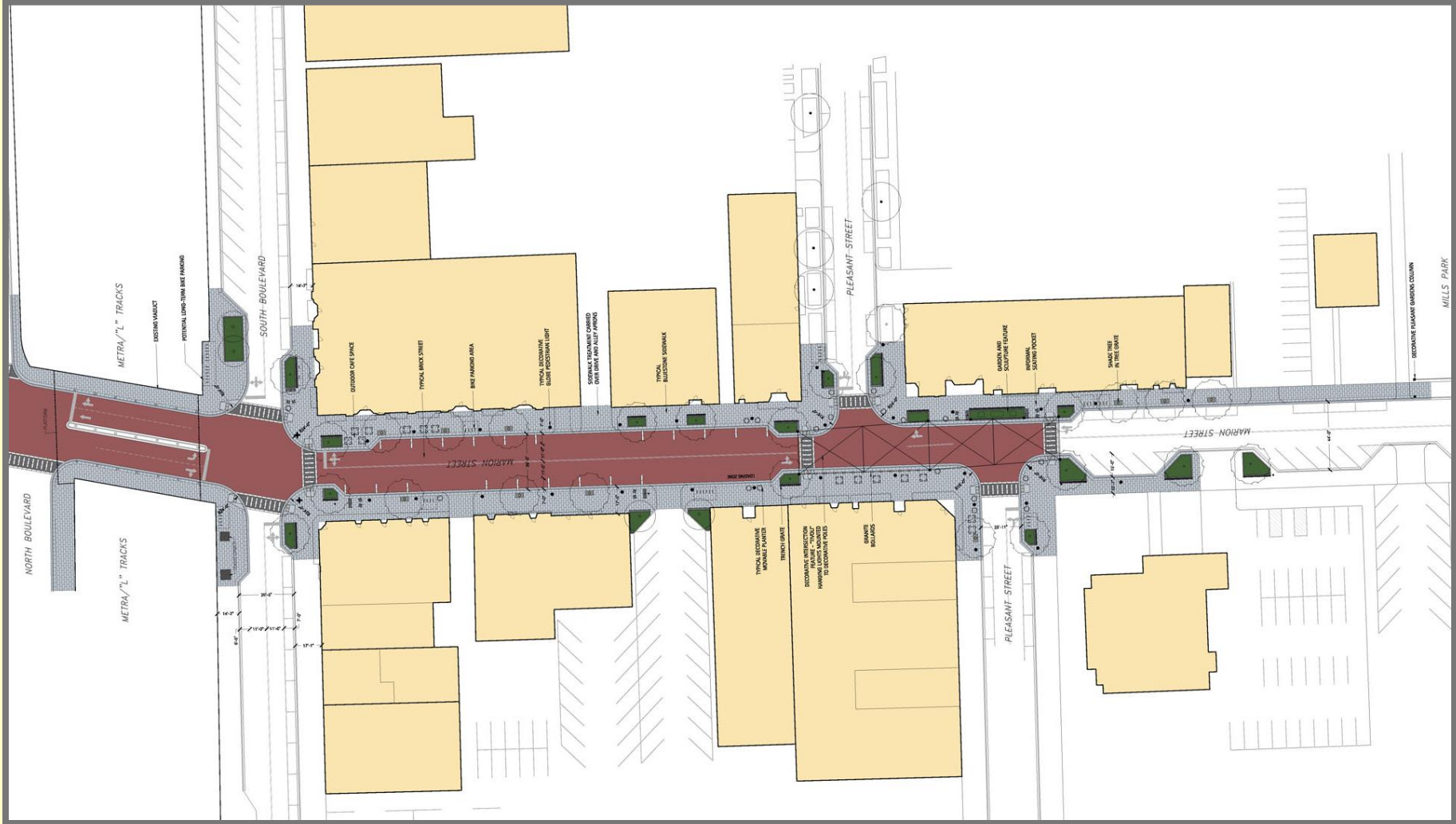
Proposed: 25 Spaces

## Street Trees

Existing: 28 Trees

Proposed: 30 Trees

# SOUTH MARION STREET: STREETSCAPE PLAN



North Marion Length: \_\_\_\_\_

# SOUTH MARION STREET: GUIDING VISION



# NORTH OAK PARK AVENUE: EXISTING CONDITIONS

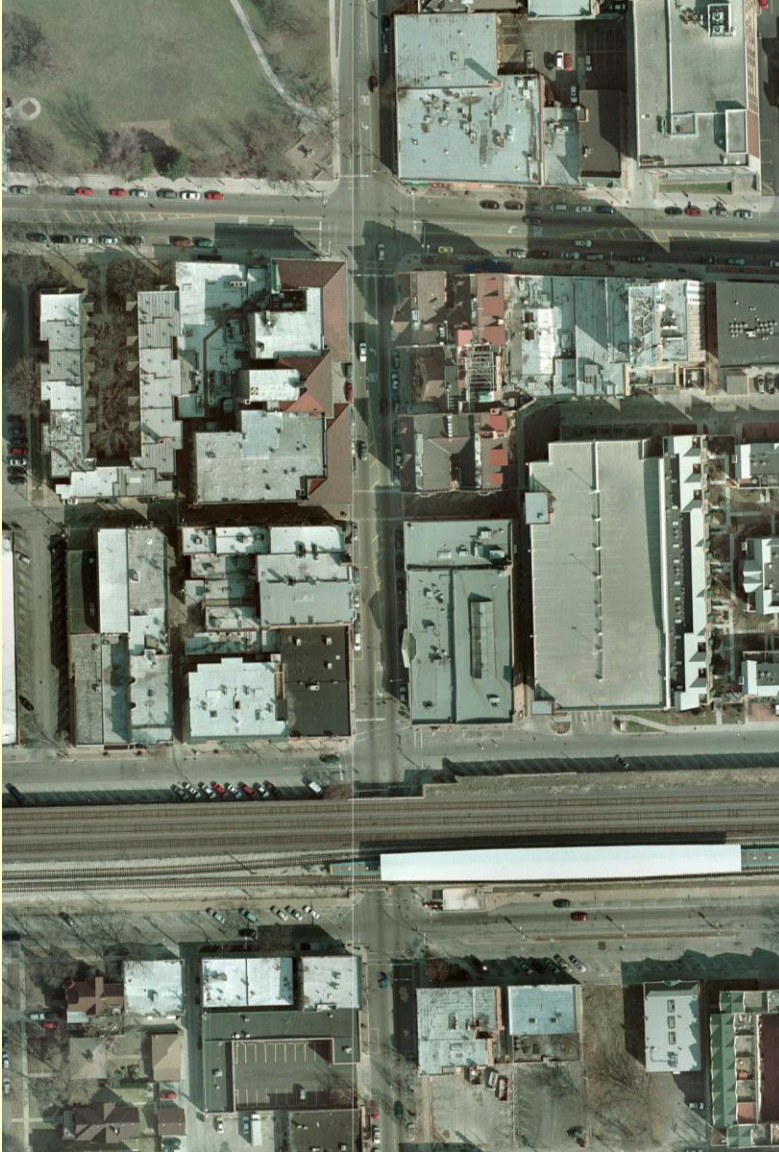


**INSERT EXISTING  
CONDITIONS PHOTO**

**INSERT EXISTING  
CONDITIONS PHOTO**

**\*Targeted Underground Utility Replacement  
Needed**

# NORTH OAK PARK AVENUE: EXISTING CONDITIONS



## On-Street Parking Spaces

Existing: 28 Spaces

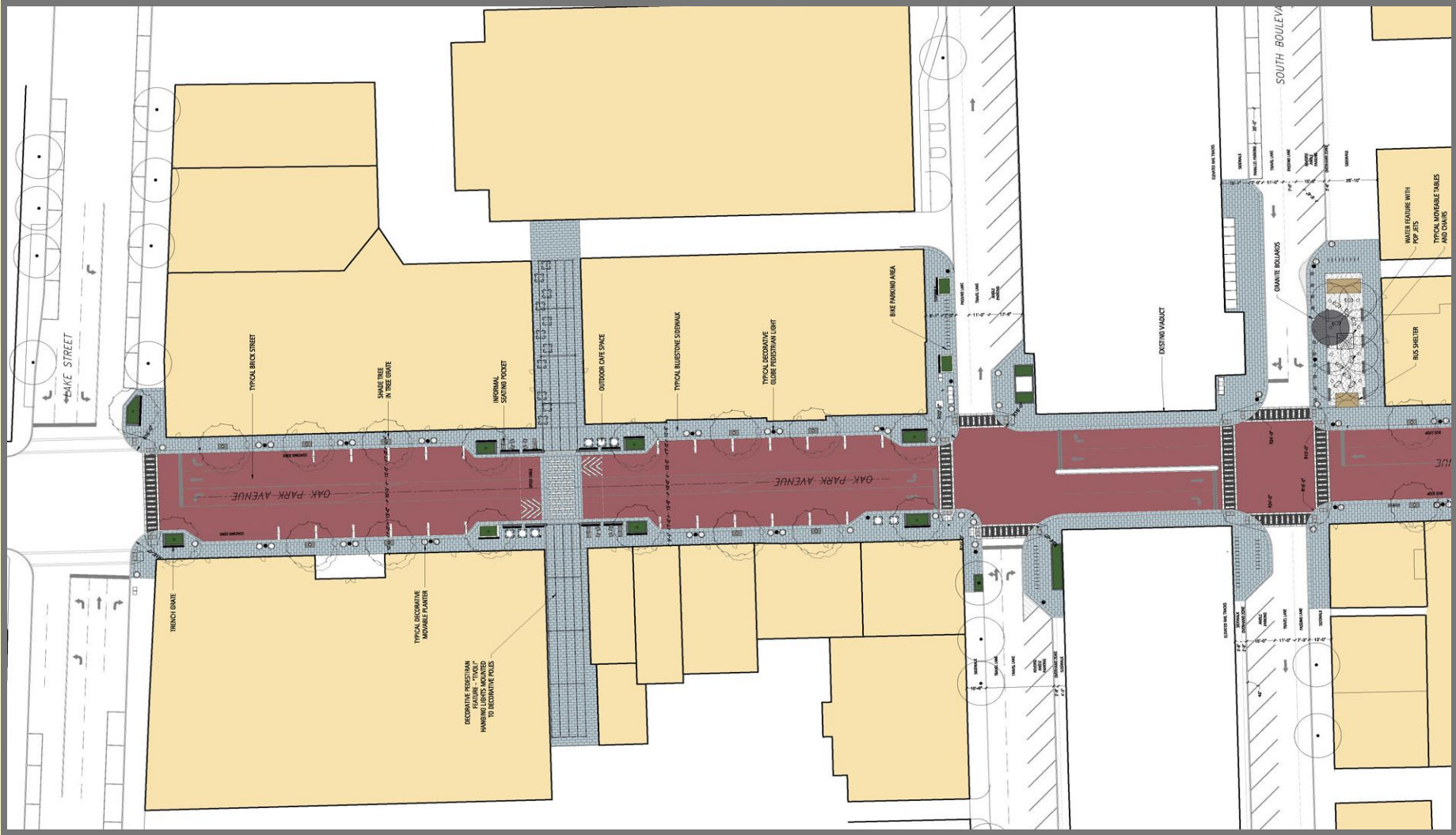
Proposed: 20 Spaces

## Street Trees

Existing: 7 Trees

Proposed: 19 Trees

# NORTH OAK PARK AVENUE: STREETSCAPE PLAN



North Marion Length: \_\_\_\_\_



# NORTH OAK PARK AVENUE: GUIDING VISION



# SOUTH OAK PARK AVENUE: EXISTING CONDITIONS



**INSERT EXISTING  
CONDITIONS PHOTO**

**INSERT EXISTING  
CONDITIONS PHOTO**

# SOUTH OAK PARK AVENUE: EXISTING CONDITIONS



## On-Street Parking Spaces

Existing: 33 Spaces

Proposed: 28 Spaces

## Street Trees

Existing: 22 Trees

Proposed: 28 Trees

# SOUTH OAK PARK AVENUE: STREETSCAPE PLAN

**INSERT RENDERED  
CONCEPTUAL SITE PLAN**

# SOUTH OAK PARK AVENUE: GUIDING VISION



# IMPACT ZONES

# IMPACT ZONE: MARION STREET/PLEASANT INTERSECTION



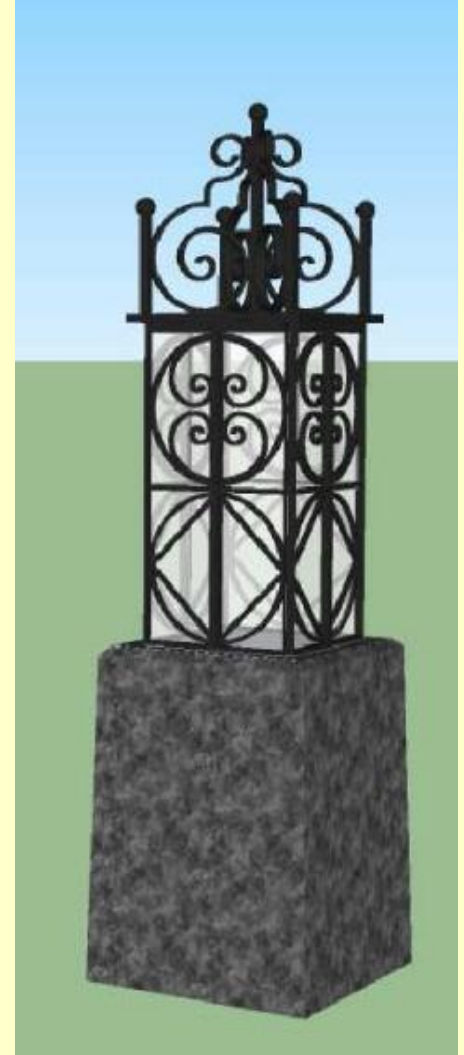
# IMPACT ZONE: MARION STREET/PLEASANT INTERSECTION

An architectural rendering of a streetscape. In the foreground, a grey car is partially visible on the left. A large, leafy tree stands in a green-paved planter box. To the right, a person is sitting on a dark bench. In the background, a building with string lights is visible, and several silhouettes of people are walking on the sidewalk. The sky is blue.

**REPLACE WITH TILLROCK SKETCH**



# IMPACT ZONE: MARION STREET/PLEASANT INTERSECTION

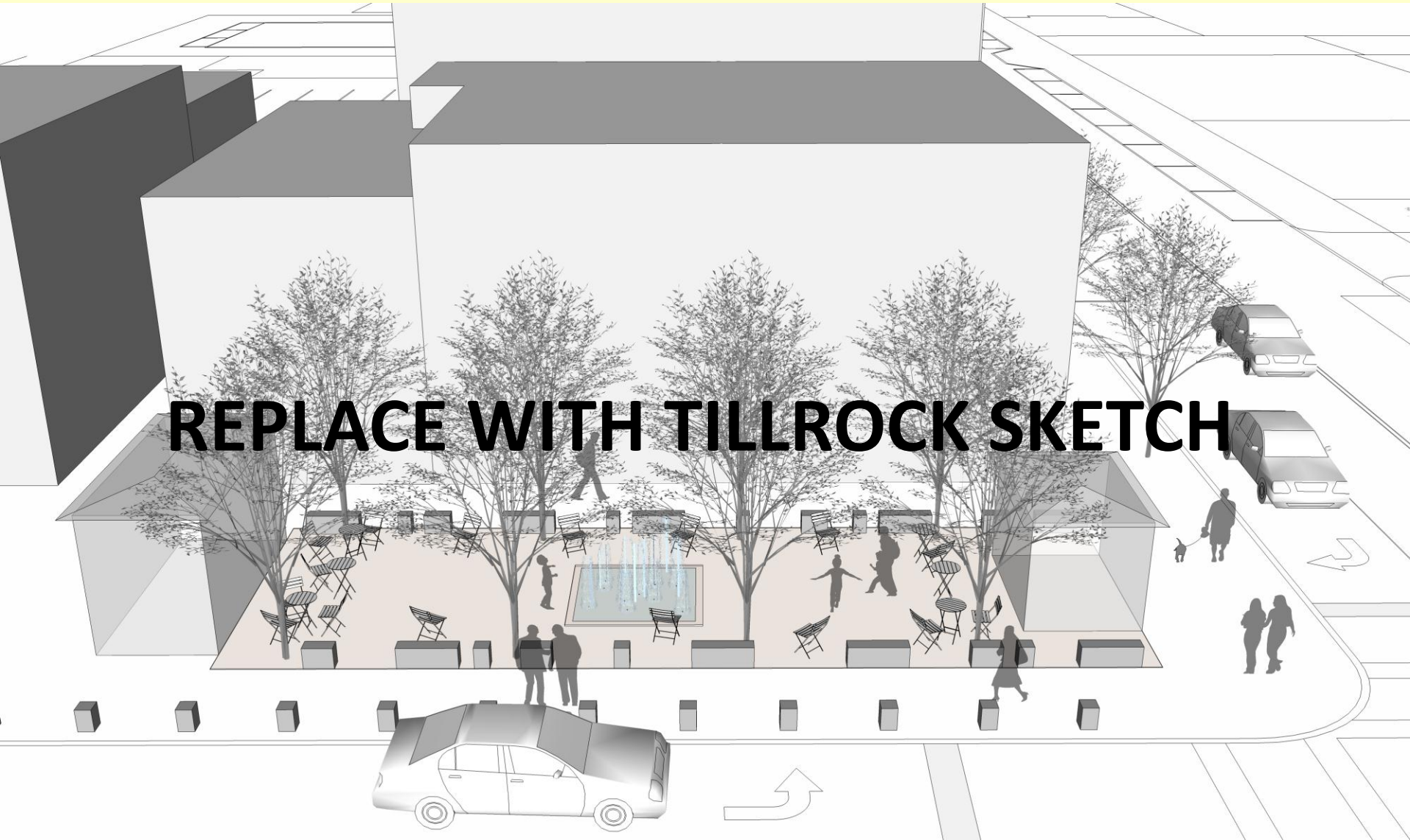


# IMPACT ZONE: OAK PARK AVE/SOUTH BOULEVARD PLAZA



# IMPACT ZONE: OAK PARK AVE/SOUTH BOULEVARD PLAZA

**REPLACE WITH TILLROCK SKETCH**



# IMPACT ZONE: OAK PARK AVE/SOUTH BOULEVARD PLAZA



**INSERT REFERENCE  
PHOTO**

# IMPACT ZONE: HUNTER COURT | MID-BLOCK CROSSING



VILLAGE OF OAK PARK

Downtown Streetscape: Planning and Design

# IMPACT ZONE: HUNTER COURT | MID-BLOCK CROSSING

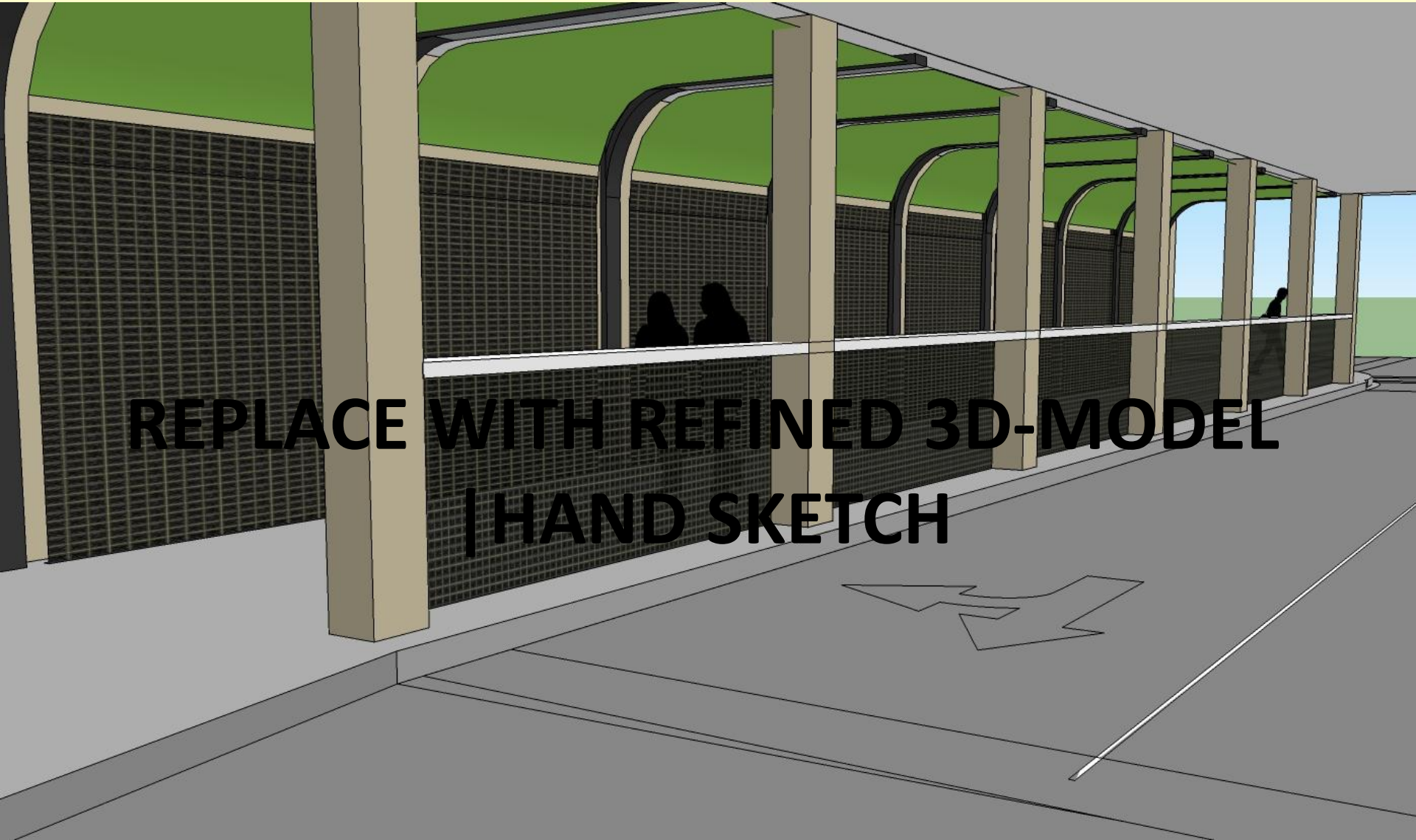


REPLACE WITH TILLROCK SKETCH

The image is a black and white architectural rendering of a streetscape. It features a central pedestrian crossing with a decorative, ornate archway spanning across it. The archway is supported by two tall, slender poles. On either side of the crossing, there are several streetlights with multiple globes. The background shows a building facade with large windows. In the foreground, there are silhouettes of people walking and sitting on benches. The overall scene is a detailed urban design sketch.

UNIQUE ELEMENTS

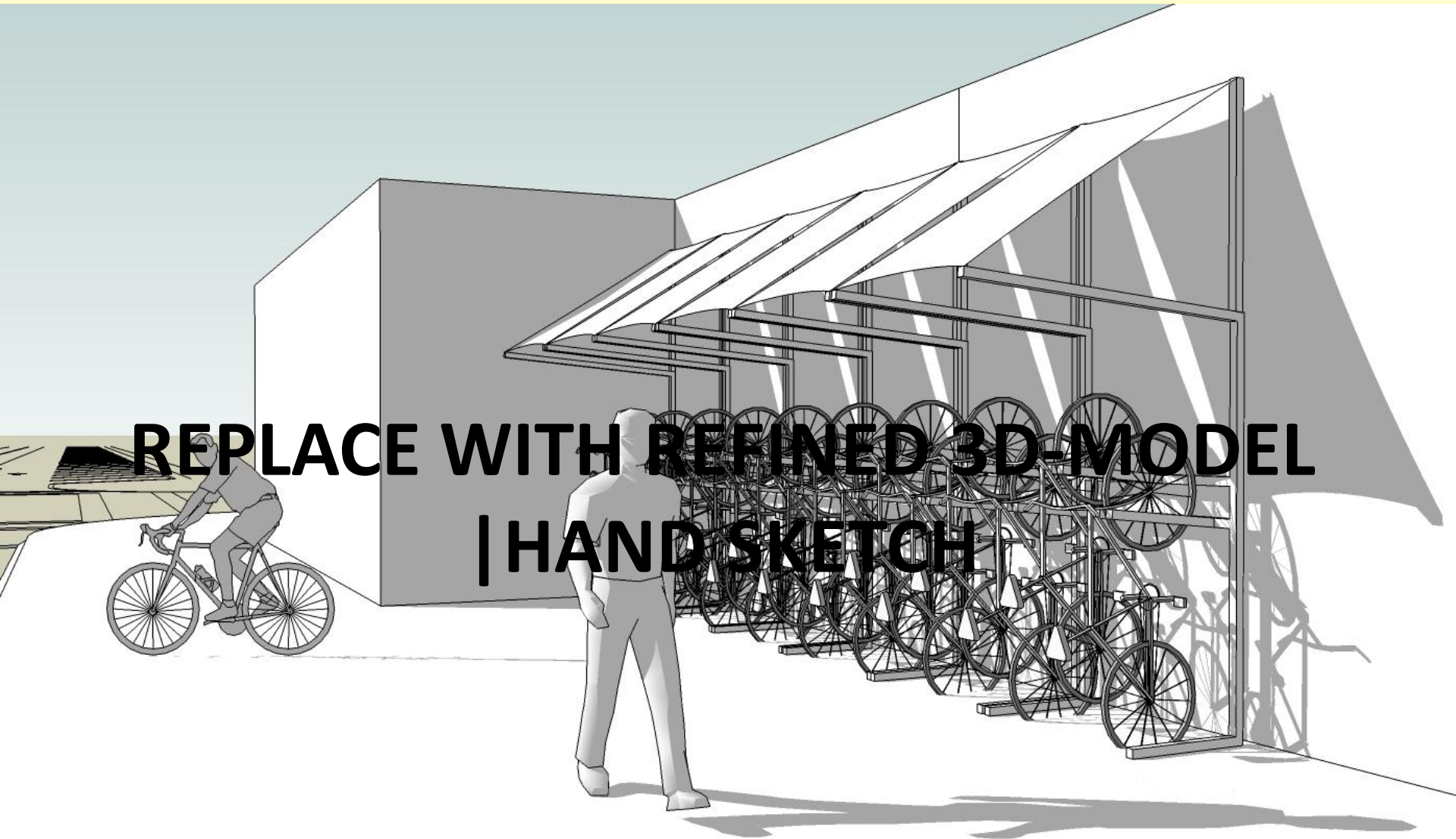
## UNIQUE ELEMENTS: VIADUCT



**REPLACE WITH REFINED 3D-MODEL  
| HAND SKETCH**



# UNIQUE ELEMENTS: BIKE PARKING



**REPLACE WITH REFINED 3D-MODEL  
| HAND SKETCH**

# ADDITIONAL FUNCTIONAL STREETSCAPE COMPONENTS

- Irrigation/Drainage
- Landscape Lighting
- Electrical Connections
- Seasonal Lighting

# ADDITIONAL SUSTAINABLE STREETScape COMPONENTS

- Improved walk-ability | bike-ability
- Durability | life-cycle of materials
- LED | Induction Lighting

QUESTIONS OR COMMENTS