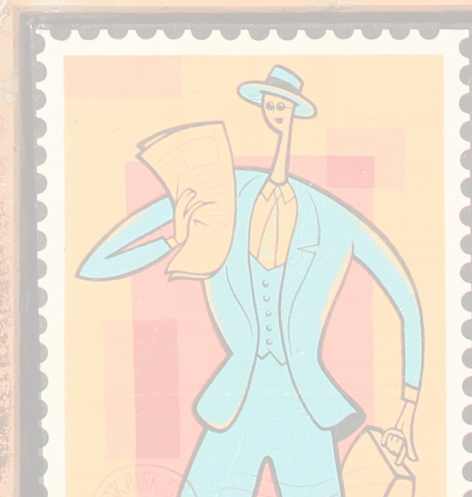
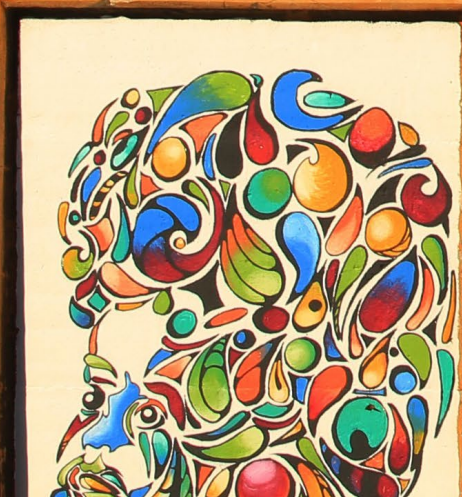




Climate Ready Oak Park & EEC

Plan Adopted August 1, 2022



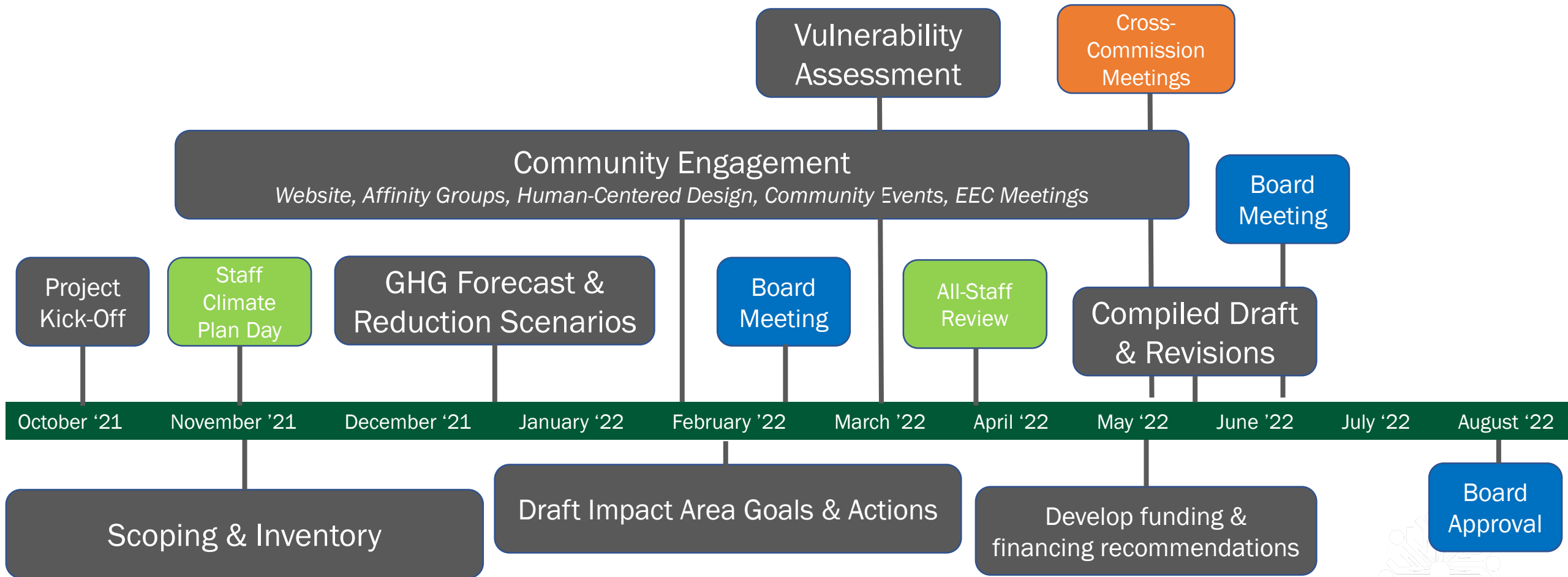


What is Climate Ready Oak Park?

a comprehensive and long-range plan that provides an aspirational vision, concrete commitments and goals, and detailed actions to become a more sustainable and resilient community



The Process



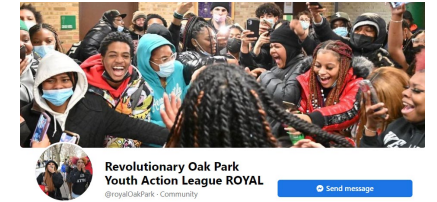
The Partners



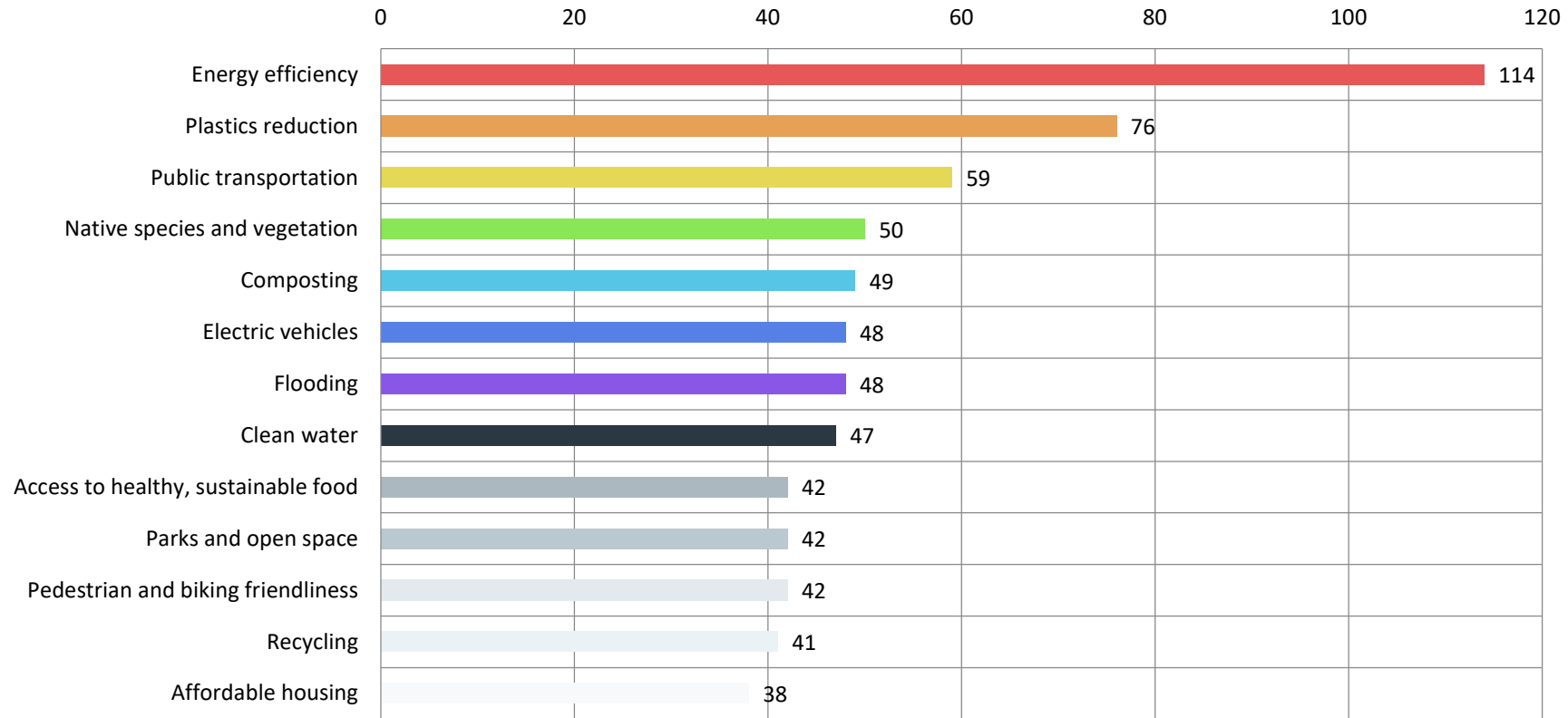
SUBURBAN UNITY ALLIANCE



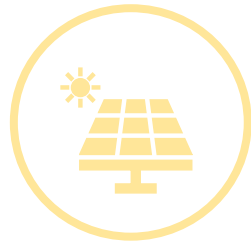
Black residents of Oak Park



What are your priorities for combating climate change in Oak Park? (up to 3)



The Structure: Impact Areas



Energy Use in
Buildings & Housing



Transportation



Extreme Weather &
Resiliency



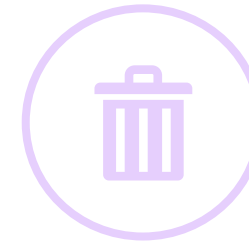
Community Health &
Environmental Quality



Sustainable Economic
Development



Healthy & Sustainable
Food



Waste Reduction



Parks, Plants, &
Biodiversity

The Structure

Climate Ready Oak Park is organized by **Impact Area**.

Each **Impact Area** contains 1-7 overarching **goals**.

Each **goal** contains specific, implementation **actions** with a timeline, cost range, and lead implementor.



The Vulnerability Assessment: Climate Vulnerability Index

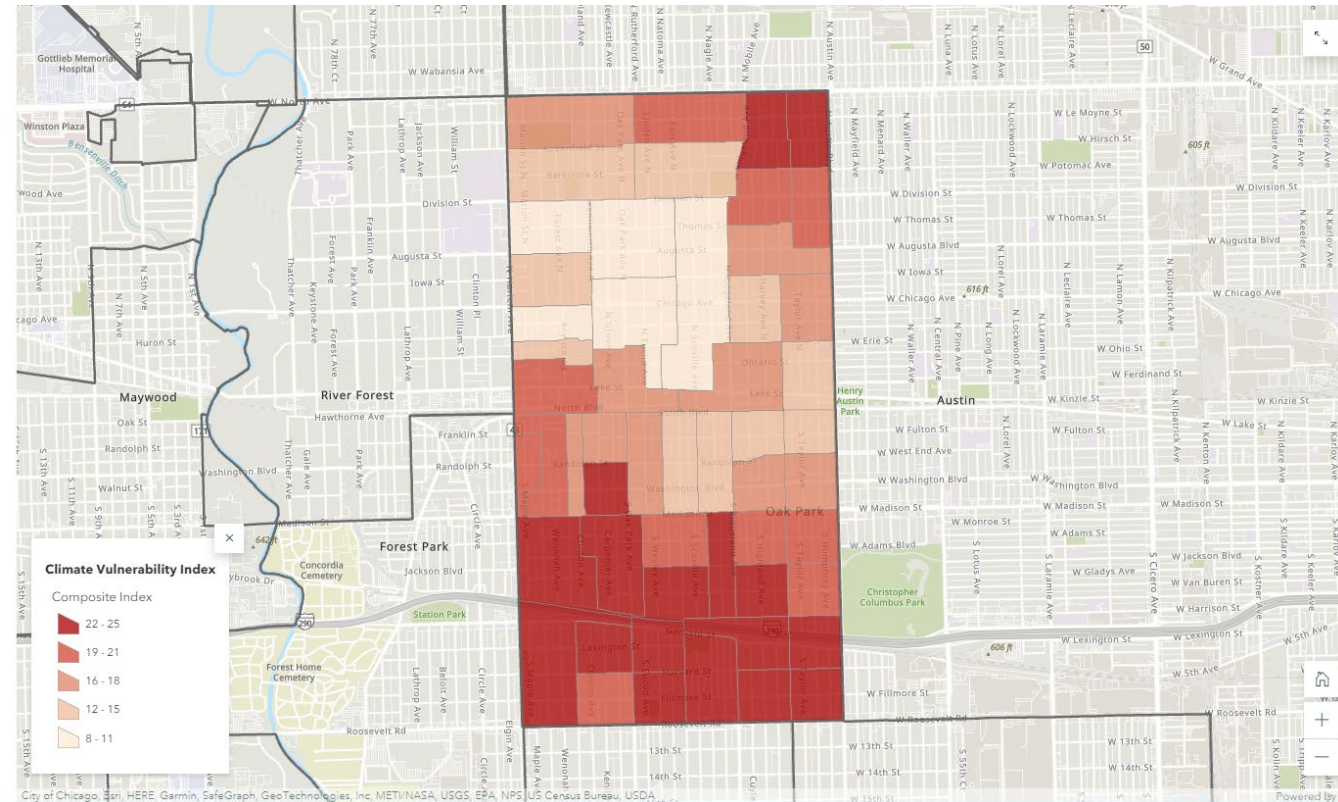
Climate Vulnerability Index (CVI): Composite

Key Points

- Each of the previous climate datasets was combined into the Climate Vulnerability Index (CVI).
- The areas shown as darkest red have a higher combined climate vulnerability. These areas are the northeast corner of the village, and south of Madison Street.
- The areas shown as lightest red have a lower combined climate vulnerability. The areas are concentrated mainly in north-central Oak Park.

This analysis combines several of the climate and environmental variables to create a combined summary of the places in Oak Park most vulnerable to all the hazards assessed.

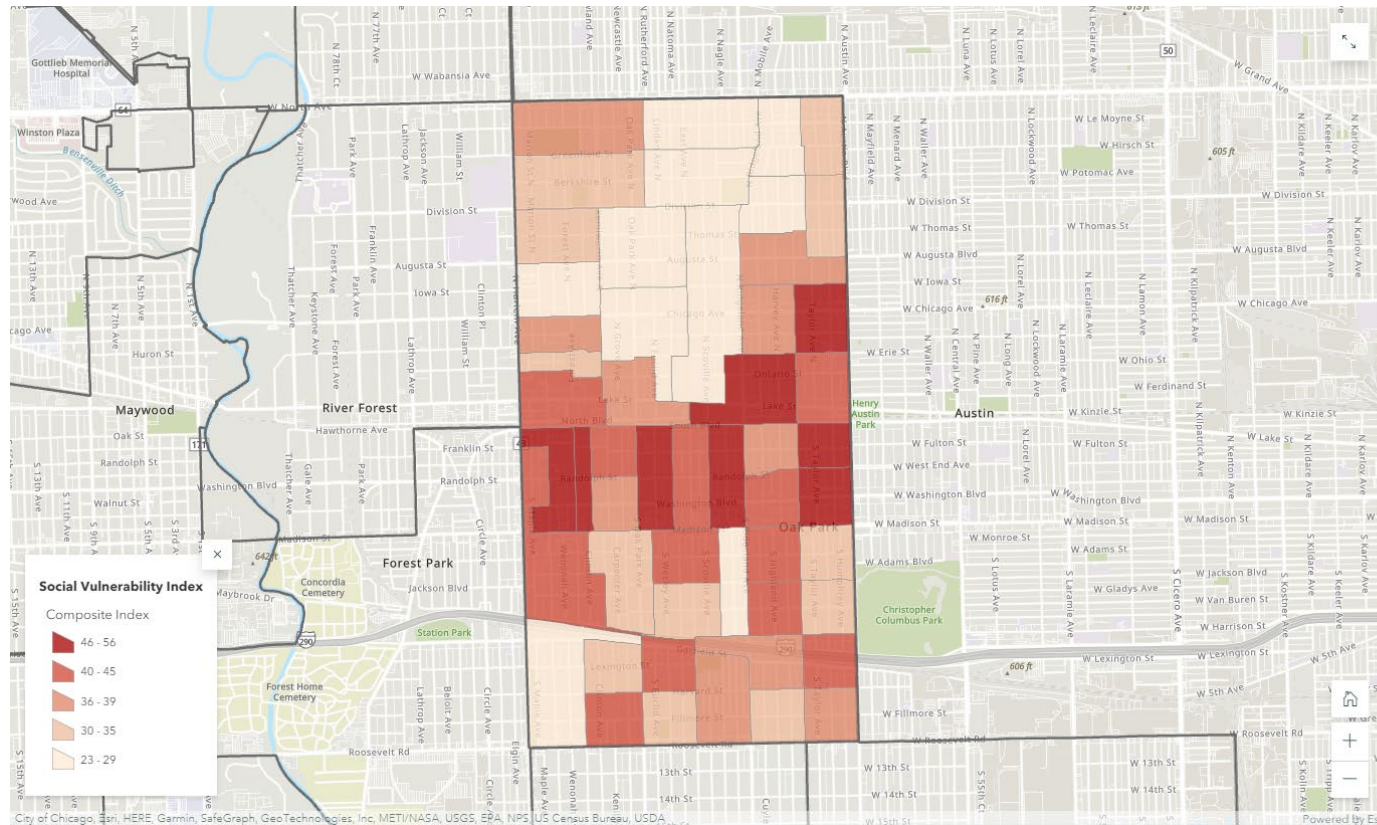
Each factor is ranked on a 1-5 index using natural breaks, then each score is added together to create a composite (PM2.5 and Ozone include values of 1-2 and 1,



[Existing Conditions & Vulnerability Assessment \(arcgis.com\)](https://arcgis.com)



The Vulnerability Assessment: Social Vulnerability Index



Social Vulnerability Index (SVI): Composite

Each of the previous social datasets was combined into the Social Vulnerability Index (SVI).

This analysis combines several of the socio-economic variables to create a summary of the places in Oak Park where people live who may be at greater risk of impacts from climate and environmental hazards.

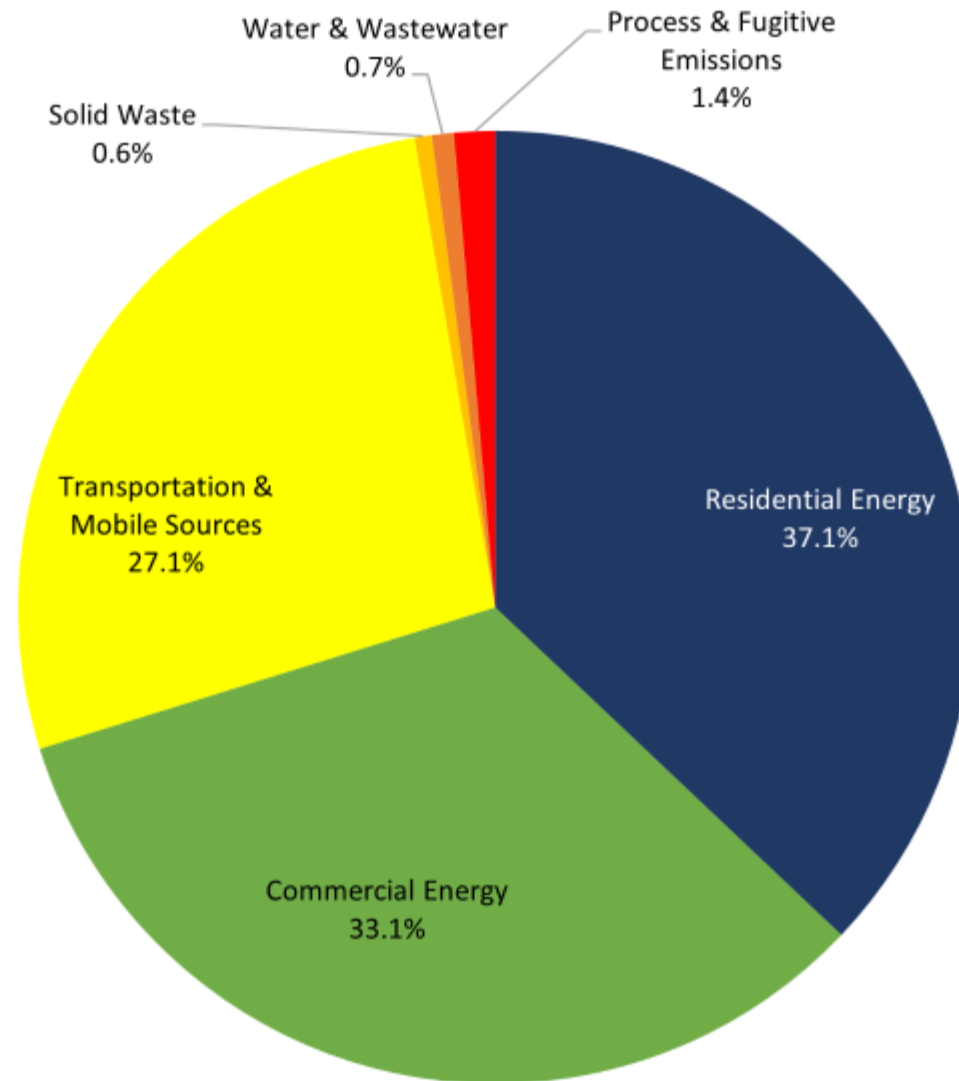
Each factor is ranked on a 1-5 index using natural breaks, then each score is added together to create a composite:

- % Households below Poverty Level
- % Individuals 65+
- % Households with Children Under 5
- % Households with a Disability
- % Building Age of Renter Occupied Housing <1940
- % Non-White (Including all Hispanic or Latino regardless of race)
- % in Front-line Occupations
- % Lacking Personal Vehicle Access

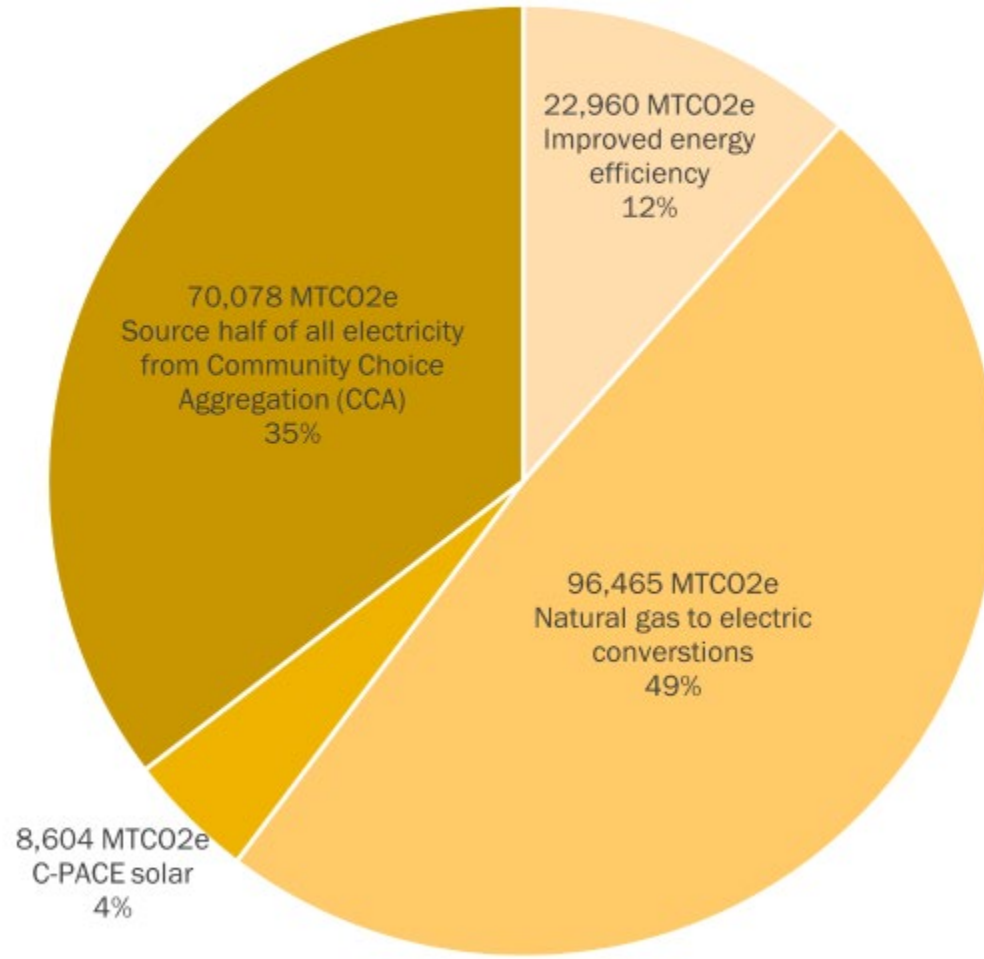
[Existing Conditions & Vulnerability Assessment \(arcgis.com\)](https://arcgis.com)



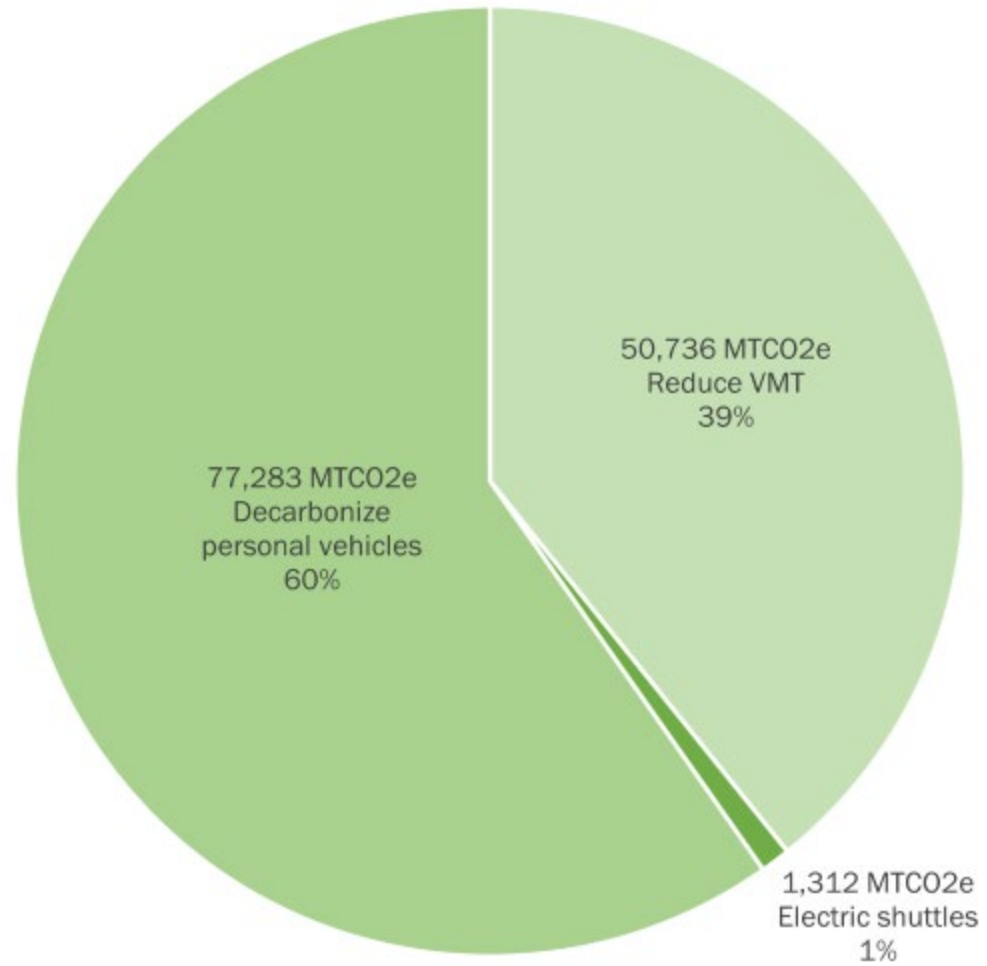
2019 Oak Park GHG Emissions by Category



2030 Emissions Reduction Scenario Estimate: Energy Use in Buildings & Housing



2030 Emissions Reduction Scenario Estimate: Transportation Actions



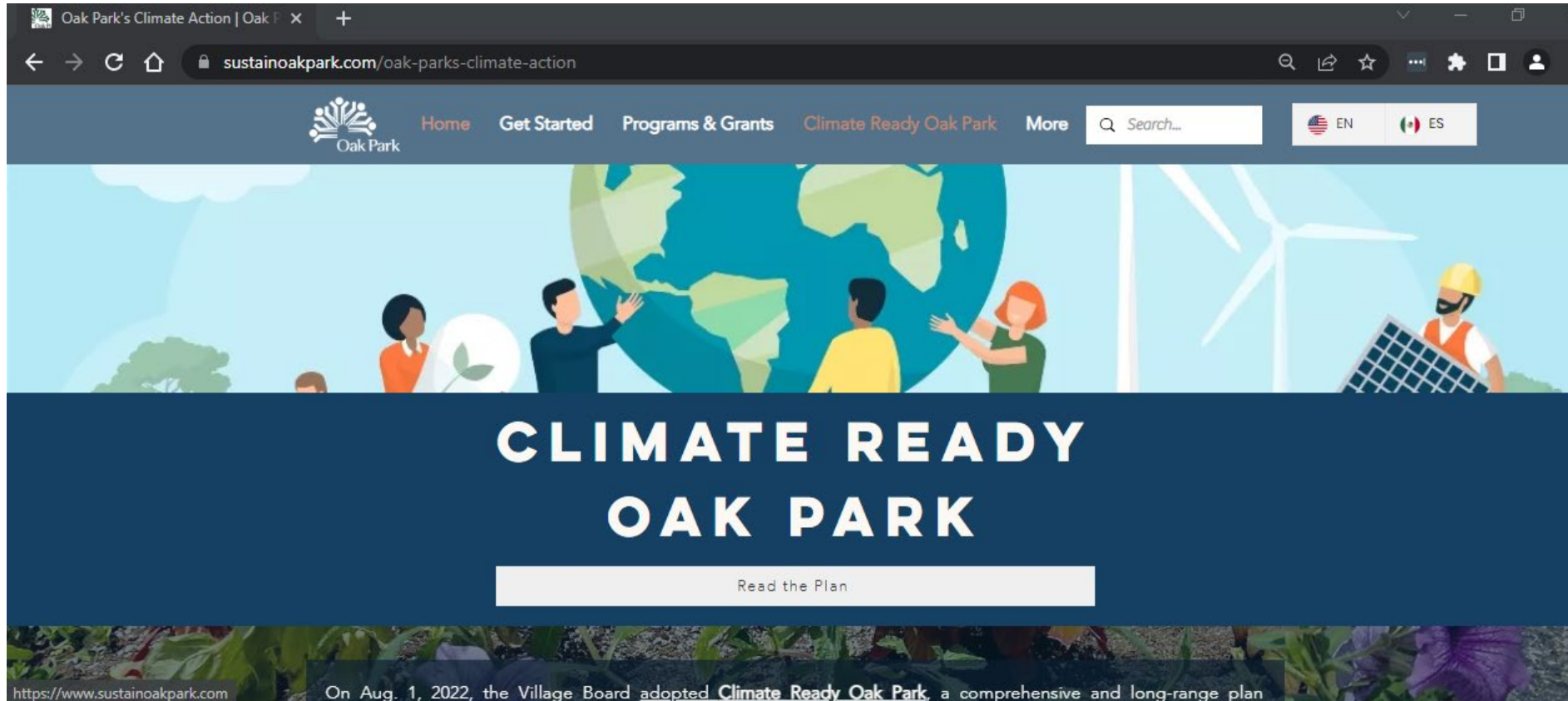


The Goals

- *Decrease community-wide greenhouse gas emissions by **60% by 2030**, relative to 2019 emission levels.*
- *Achieve **community-wide net zero greenhouse gas emissions by 2050**.*
- *Establish **30% of Oak Park's land as green infrastructure or enhanced park management** for native plants, wildlife, and people.*
- *Direct **40% of public climate and sustainability dollars to the most vulnerable** and impacted community members.*
- ***Partner with frontline organizations** and the most impacted community members to create climate and sustainability policies and programs.*



The Public-Facing Platform



www.oak-park.us/climateplan



EEC Charter

2-21-2: DUTIES:

The Commission shall advise the Board of Trustees with regard to the following: **energy-related matters of concern** to the Village; **methods of promoting** energy efficiency and energy conservation for the Village government and Village residents; the best methods of maintaining an environment beneficial to the Village and as free from **pollution** as is practical and is reasonable; methods to promote recycling and **reduce waste** in the Village; **and solid waste management-related matters generally** in the Village. (Ord. 1997-0-32, 8-4-97)



Work Plan Opportunities

Energy, Pollution, Waste:

1. Policy working group
2. Program Design working group / beta testing
3. Communications strategy / amplification
4. Community engagement strategy / ambassador
5. Community event planning / tabling





Climate Plan Implementation:

Energy Use in Buildings & Housing Goals

Vision: Oak Park's buildings are powered by locally-generated renewable energy. New developments are built sustainably, and most older buildings are preserved and renovated to be carbon neutral. Renewable energy is accessible and affordable to all within the community. Sufficient high-quality, permanently affordable, sustainable housing is available. All community members have access to quality, affordable, energy efficient housing support during times of transition or need. Historic and cultural assets are protected, inclusive of all backgrounds, and acknowledge historical inequities.

Total Cost Range:
 \$\$\$ = \$1.5 Million+
 \$\$\$ = \$500,000-1.5 Million
 \$ = Under \$500,000

Impact:
 ● = Very High ● = High ● = Moderate
 ○ = Low ○ = None

Impact Areas and Co-Benefits

	GOAL	LEADERS	PRIORITY LEVEL	COSTS TO VILLAGE	COSTS TO COMMUNITY	Impact Areas and Co-Benefits							
						Energy Use in Buildings & Housing	Transportation	Extreme Weather & Resiliency	Community Health & Environmental Quality	Sustainable Economic Development	Healthy & Sustainable Food	Waste Reduction	Parks, Plants, & Biodiversity
Energy Use in Buildings & Housing	Advance Equity in Buildings & Housing	Taxing Bodies Village of Oak Park	High	\$	\$\$	●	○	○	○	○	○	○	○
	Establish Energy Efficiency Reach Codes for New Buildings and Major Renovations	Government Taxing Bodies Village of Oak Park	Low	\$	\$\$\$	●	○	○	○	○	○	○	○
	Establish Energy Goals for Existing Buildings	Businesses Community/All Government Institutions	High	\$	\$\$\$	●	○	○	○	○	○	○	○
	Establish Programs to Support Building Decarbonization	Commercial/Businesses Community Groups Government Institutions Village of Oak Park	High	\$\$\$	\$	●	○	○	○	○	○	○	○
	Expand Community Purchasing of Renewable Energy	Community Groups Government Institutions Village of Oak Park	High	\$\$\$	\$	●	○	○	○	○	○	○	○
	Preserve the Embodied Energy & Heritage of Existing Buildings	Community Groups Village of Oak Park	Low	\$\$	\$	●	○	○	○	○	○	○	○



Building Energy Actions: 2023

No.	Action
AE01	Conduct an Equity Impact Analysis, authentic community engagement, and user-centered design for Village housing and building assistance programs funded by public dollars.
AE03	Dedicate at least 40 percent of Community Choice Aggregation revenue to clean energy and climate retrofits for highly vulnerable community members.
EE01	Establish and implement an energy stretch code for new construction and major renovations that requires enhanced building system performance, electrification, and readiness for on-site solar energy and electric vehicle (EV) charging.
EE02	Adopt enhanced building performance standards for energy, water, waste, and resiliency, for developments receiving Village funding or approval, as allowed by State statute. Include priority criteria to reduce building emissions and energy use and incorporate into capital planning, operations, and maintenance decisions



Building Energy Actions: 2023

No.	Action
EN03	Set a goal to transition natural gas units in all existing buildings across the Village to electric units. Include language in all projects with Village involvement or funds addressing building energy use
EN04	Invest in socially and environmentally responsible IT technology. Offset data storage using nature-based carbon sequestration
BD06	Implement an enhanced "one-stop shop" program to provide coordinated energy, resiliency, and health housing retrofits for highly vulnerable community members. Include terms to maintain permanent affordability.
BD08	Pursue funding to study the feasibility of district heat/geothermal energy networks to replace gas heat on a neighborhood- or community-wide basis.



Climate Plan Implementation:

Community Health & Environmental Quality

Vision: Community members have equitable access to affordable and sufficient clean air, land, and drinking water. Drinking water infrastructure, from water treatment plant to tap, is free of harmful contamination. Healthy homes and neighborhoods support a high quality of life for people of all ages, abilities, and backgrounds.

Total Cost Range:
 \$\$\$ = \$1.5 Million+
 \$\$ = \$500,000-1.5 Million
 \$ = Under \$500,000

Impact:
 ● = Very High ● = High ● = Moderate
 ○ = Low ○ = None

Impact Areas and Co-Benefits

GOAL	LEADERS	PRIORITY LEVEL	COSTS TO VILLAGE	COSTS TO COMMUNITY	Impact Areas and Co-Benefits								
					Energy Use in Buildings & Housing	Transportation	Extreme Weather & Resiliency	Community Health & Environmental Quality	Sustainable Economic Development	Healthy & Sustainable Food	Waste Reduction	Parks, Plants, & Biodiversity	
Advance Equity in Community Health	Taxing Bodies	High	\$	\$	○	○	○	●	○	○	○	○	
Improve Air Quality	Community/All Government Village of Oak Park	Low	\$	\$	○	○	○	●	○	○	○	○	
Reduce Noise Impacts	Taxing Bodies Village of Oak Park	Low	\$	\$\$\$	○	○	○	●	○	○	○	○	
Conserve & Protect Clean Drinking Water	Businesses Community/All Government Institutions Taxing Bodies Village of Oak Park	Low	\$\$	\$\$\$	○	○	○	●	○	○	○	○	



Health & EQ Actions: 2023

No.	Action
CH01	Conduct an Equity Impact Analysis, authentic community engagement, and user-centered design, for environmental health and drinking water programs funded by public dollars.
CH02	Coordinate with the Oak Park IPLAN to support public health services and programs related to climate resiliency and sustainability.
NI03	Implement a policy and program to transition lawn care to use quiet, zero-emissions equipment.
DW06	Identify options to create an equitable and affordable full lead service line replacement program for low- and moderate-income residents.
DW07	Identify options to adopt a progressive water/sewer rate structure and water conservation program that increases affordability for lower-income residents.



Climate Plan Implementation:

Waste Reduction

Vision: Oak Park is zero-waste community with a circular economy. All community members (institutions, business, and residents) can afford & access high-quality waste-diversion services in or near their home, place of work, and recreational destinations. Disposable, non-biodegradable products are limited in Oak Park based on needs rather than convenience.

Total Cost Range:
 \$\$\$ = \$1.5 Million+
 \$\$ = \$500,000-1.5 Million
 \$ = Under \$500,000

Impact:
 ● = Very High ● = High ● = Moderate
 ○ = Low ○ = None

Impact Areas and Co-Benefits

GOAL	LEADERS	PRIORITY LEVEL	COSTS TO VILLAGE	COSTS TO COMMUNITY	Impact Areas and Co-Benefits								
					Energy Use in Buildings & Housing	Transportation	Extreme Weather & Resiliency	Community Health & Environmental Quality	Sustainable Economic Development	Healthy & Sustainable Food	Waste Reduction	Parks, Plants, & Biodiversity	
Advance Equity in Waste Reduction	Taxing Bodies Village of Oak Park	High	\$	\$	○	○	○	○	○	○	○	●	○
Expand Waste Goals & Data	Government Institutions Taxing Bodies Village of Oak Park	Low	\$	\$	○	○	○	○	○	○	○	●	○
Encourage Zero-Waste Practices	Community/All Government Village of Oak Park	Low	\$	\$	○	○	○	○	○	○	○	●	○
Reduce Plastics & Packaging Waste	Businesses Government Village of Oak Park	Low	\$	\$	○	○	○	○	○	○	○	●	○
Reduce Organic Waste	Businesses Government Village of Oak Park	Low	\$	\$	○	○	○	○	○	○	○	●	○
Reduce Hazardous Materials Waste	Taxing Bodies Village of Oak Park	Low	\$\$	\$	○	○	○	○	○	○	○	●	○
Reduce Building Construction Waste	Commercial/Businesses Village of Oak Park	Low	\$	\$	○	○	○	○	○	○	○	●	○



Waste Reduction Actions: 2023

No.	Action
WR01	Conduct an Equity Impact Analysis, authentic community engagement, and user-centered design, for waste management and procurement policies and programs funded by public dollars.
WR03	Identify options to change waste programs to a progressive rate structure that increases affordability for lower-income residents.
WG03	Include a priority criterion to reduce waste into capital planning, operations, and maintenance decisions and set a percent goal for waste reduction community-wide.
PP02	Expand the Retail Single Use Bag ordinance to include all retail establishments. Review the current fee structure.



Climate Plan Implementation:

Climate Plan Administration

Total Cost Range:
 \$\$\$ = \$1.5 Million+
 \$\$ = \$500,000-1.5 Million
 \$ = Under \$500,000

	GOAL	LEADERS	PRIORITY LEVEL	COSTS TO VILLAGE	COSTS TO COMMUNITY
Climate Plan Administration	Share Implementation Responsibilities & Benefits	Community/All Taxing Bodies	High	\$	\$
	Activate Community	Community/All Government	High	\$	\$
	Connect Resources	Community/All Taxing Bodies	Low	\$	\$
	Change Systems	Community/All	Low	\$	\$
	Monitor & Update	Village of Oak Park	Low	\$\$	\$



CROP Implementation Actions: 2023

No.	Action
AC01	Celebrate an annual Earth Day to May Day multi-day festival, with collaboration across organizations, community groups, and local artists to recognize and encourage sustainable action.
AC02	Launch a local arts and social media initiative to communicate climate science and inspire action across community groups.
CR02	Update communications to point toward resources for institutions, businesses, and community groups interested in deepening their commitment to sustainability.
CS01	Implement and participate in advocacy campaigns for local, state and federal climate action policies and programs that further sustainability, climate action, and resiliency.



Climate Plan Implementation:

Transportation

Vision: Oak Park's transportation is safe, accessible to people with disabilities, and reliable. All destinations in Oak Park can be reached sustainably and affordably without pollution. All community members have access to carbon neutral, minimal-pollution transportation options, regardless of living situation or income. Community members enjoy choosing public transportation or active options, like cycling, for local trips and daily commutes. Local government proudly uses carbon neutral vehicles. Local freight deliveries are zero-emission and managed to minimize pollution. Pedestrian and cyclist deaths are eliminated.

Total Cost Range:
 \$\$\$ = \$1.5 Million+
 \$\$ = \$500,000-1.5 Million
 \$ = Under \$500,000

Impact:
 ● = Very High ● = High ● = Moderate
 ○ = Low ○ = None

Impact Areas and Co-Benefits

	GOAL	LEADERS	PRIORITY LEVEL	COSTS TO VILLAGE	COSTS TO COMMUNITY	Energy Use in Buildings & Housing	Transportation	Extreme Weather & Resiliency	Community Health & Environmental Quality	Sustainable Economic Development	Healthy & Sustainable Food	Waste Reduction	Parks, Plants, & Biodiversity
Transportation	Advance Equity in Transportation	Community Groups Taxing Bodies Village of Oak Park	High	\$	\$	○	●	○	○	○	○	○	○
	Establish Emissions Reduction Goals for Transportation Systems	Taxing Bodies Village of Oak Park	High	\$\$	\$	○	●	○	○	○	○	○	○
	Shift from Personal Vehicles to Active Transportation and Transit	Businesses Community/All Community Groups Government Institutions Taxing Bodies Village of Oak Park	High	\$\$\$	\$	○	●	○	○	○	○	○	○
	Launch Vehicle Decarbonization Programs	Community Groups Government Institutions Village of Oak Park	High	\$\$\$	\$\$\$	○	●	○	○	○	○	○	○



Climate Plan Implementation:

Extreme Weather & Resiliency

Vision: When extreme weather hits Oak Park, the community is prepared to adapt and respond. Weather impacts are diminished through a combination of neighborhood-wide green infrastructure, resilient building techniques, and community support systems. All community members have safe shelter that provides for their needs. Emergency information is widely communicated, ensuring that it reaches people with disabilities, older adults and children, those who speak another language, and those experiencing resource or home insecurity. Income, race, ethnicity, age, ability, occupation, and place of residence do not predict a higher risk of danger or cost from extreme weather in Oak Park.

Total Cost Range:
 \$\$\$ = \$1.5 Million+
 \$\$ = \$500,000-1.5 Million
 \$ = Under \$500,000

Impact:
 ● = Very High ● = High ● = Moderate
 ○ = Low ○ = None

Impact Areas and Co-Benefits

	GOAL	LEADERS	PRIORITY LEVEL	COSTS TO VILLAGE	COSTS TO COMMUNITY	Impact Areas and Co-Benefits									
						Energy Use in Buildings & Housing	Transportation	Extreme Weather & Resiliency	Community Health & Environmental Quality	Sustainable Economic Development	Healthy & Sustainable Food	Waste Reduction	Parks, Plants, & Biodiversity		
Extreme Weather & Resiliency	Advance Equity in Climate Resilience	Community/All Government Taxing Bodies	High	\$\$	\$\$	○	○	●	◐	◑	○	○	○		
	Establish Climate Resiliency Goals & Data	Community/All Taxing Bodies Village of Oak Park	Low	\$\$	\$	◐	◑	●	◐	○	○	○	◑		
	Establish Climate Resiliency Codes & Policies	Community Groups Government Institutions Village of Oak Park	Low	\$	\$	◐	○	●	◐	○	○	◐	◑		
	Develop Dedicated Revenue Streams for Community Resiliency Projects	Taxing Bodies Village of Oak Park	High	\$	\$	○	○	●	○	◑	○	○	◑		
	Increase Investment in Green Infrastructure & Other Resiliency Projects	Community/All Government Institutions Taxing Bodies Village of Oak Park	High	\$\$\$	\$\$\$	◐	◑	●	○	◑	○	○	◑		



Climate Plan Implementation:

Healthy & Sustainable Food

Vision: Oak Park has a zero-carbon, circular food system that eliminates food insecurity and relies heavily on food both grown and processed within the region. Food supply in the Village contributes to positive health conditions for community members.

Total Cost Range:
 \$\$\$ = \$1.5 Million+
 \$\$\$ = \$500,000-1.5 Million
 \$\$\$ = Under \$500,000

Impact:
 ● = Very High ● = High ● = Moderate
 ○ = Low ○ = None

Impact Areas and Co-Benefits

GOAL	LEADERS	PRIORITY LEVEL	COSTS TO VILLAGE	COSTS TO COMMUNITY	Energy Use in Buildings & Housing	Transportation	Extreme Weather & Resiliency	Community Health & Environmental Quality	Sustainable Economic Development	Healthy & Sustainable Food	Waste Reduction	Parks, Plants, & Biodiversity
					○	○	○	○	○	○	○	○
Healthy & Sustainable Food	Advance Equity in Food	Community Groups Taxing Bodies	High	\$\$\$	\$\$\$	○	○	○	○	○	○	○
	Support Neighborhood Food Production	Community/All Community Groups Government Institutions Village of Oak Park	Low	\$\$\$	\$\$\$	○	○	○	○	○	○	○
	Increase Investment in Local Food	Community Groups Institutions Taxing Bodies Village of Oak Park	Low	\$\$\$	\$\$\$	○	○	○	○	○	○	○
	Reduce Food Waste & Environmental Impacts	Community/All Community Groups Government Village of Oak Park	Low	\$\$\$	\$\$\$	○	○	○	○	○	○	○



Climate Plan Implementation:

Sustainable Economic Development

Vision: The local economy provides green job opportunities, living wages for workers, and is continuously strengthened for future generations. The environment in Oak Park does not adversely expose workers to climate hazards. Municipal and private revenue streams are sustainable and equitable. Economic development efforts support a local and regional green economy.

Total Cost Range:
 \$\$\$ = \$1.5 Million+
 \$\$\$ = \$500,000-1.5 Million
 \$ = Under \$500,000

Impact:
 ● = Very High ● = High ● = Moderate
 ○ = Low ○ = None

GOAL	LEADERS	PRIORITY LEVEL	COSTS TO VILLAGE	COSTS TO COMMUNITY	Impact Areas and Co-Benefits									
					Energy Use in Buildings & Housing	Transportation	Extreme Weather & Resiliency	Community Health & Environmental Quality	Sustainable Economic Development	Healthy & Sustainable Food	Waste Reduction	Parks, Plants, & Biodiversity		
Sustainable Economic Development	Advance Equity in Sustainable Development	Businesses Government Institutions	High	\$	\$	○	○	○	○	●	○	○	○	
	Expand Universal Access to Green Jobs that Provide a Livable Wage Across the Village	Commercial/Businesses Government Institutions Village of Oak Park	Low	\$\$	\$\$\$	○	○	○	○	●	○	○	○	
	Align Village Resources to Further Sustainable Economic Development	Commercial/Businesses Government Institutions	Low	\$\$\$	\$	○	○	○	○	●	○	○	○	
	Promote Sustainable Businesses and Business Practices	Commercial/Businesses Community/All Government Taxing Bodies	Low	\$	\$	○	○	○	○	●	○	○	○	

