

Vision Zero is both the commitment and the approach to eliminating death and serious injury from traffic crashes. The Village of Oak Park is taking a comprehensive approach to Vision Zero, leaning on feedback from the community and analysis of local crash trends to understand key issues and opportunities related to traffic safety.

SO FAR, OUR TEAM HAS...

- Formed and consulted a community-based steering committee
- Held a community walking tour to discuss location-based concerns
- Conducted an online survey with over **400 responses**
- Hosted a public open house to gather feedback from nearly **100 residents**
- Met with stakeholders at the Oak Park Police Department, Public Works Department, Fire Department, and Public Health Department
- Discussed traffic safety with OPRF High School students and senior residents



WHAT WE'VE HEARD:

62%

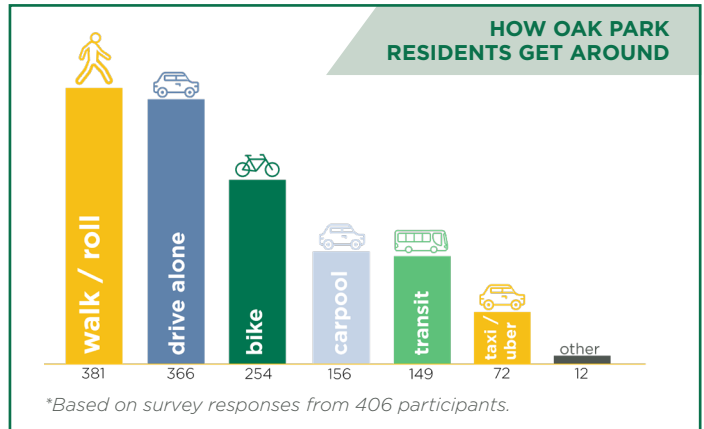
of survey respondents walk or bike in Oak Park **every day**

90%

of survey respondents walk or bike **weekly**

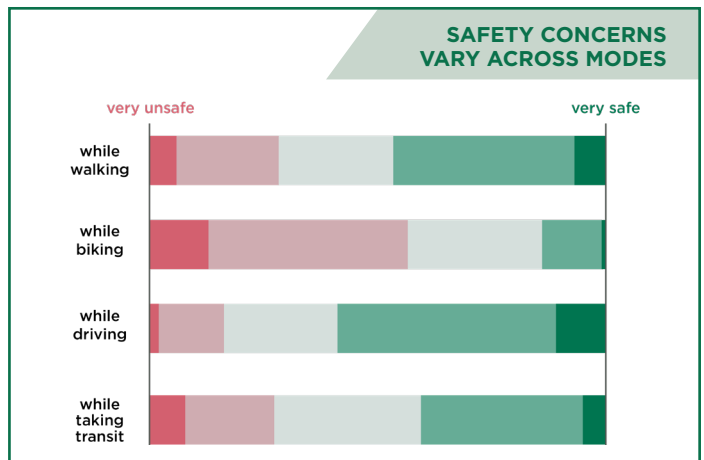
Residents change their travel patterns based on...

- Peak traffic times
- Certain streets and intersections
- Lighting levels and visibility
- Lack of enforcement and accountability
- Inadequate bike & pedestrian infrastructure



RESIDENTS' KEY DESIRES

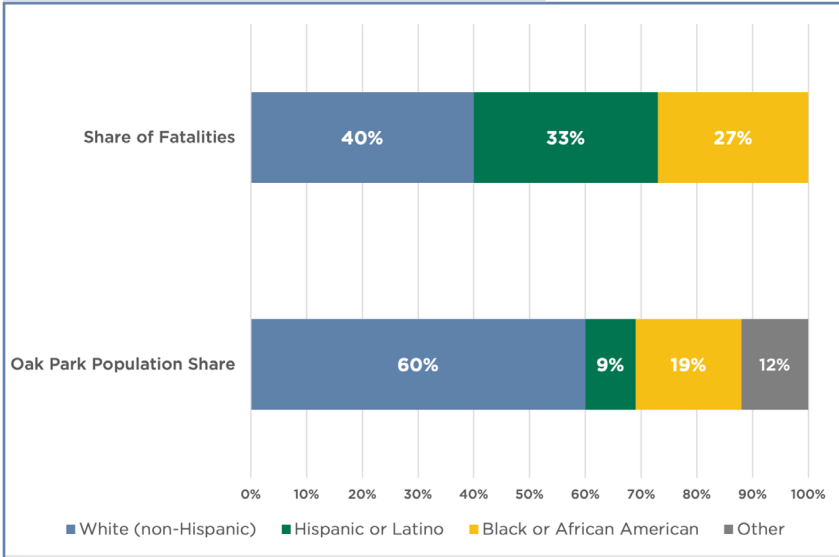
- Bike & pedestrian infrastructure**
- Traffic enforcement**
- Improvements to traffic controls**
(such as stop signs & signals)
- Traffic calming street infrastructure**
(such as bump outs, speed humps, etc.)



WHAT WE'VE LEARNED FROM CRASH DATA

EQUITY ANALYSIS

Impacts of fatal crashes by race compared with Oak Park's racial demographics.



Black and Hispanic Oak Park residents are more likely to be impacted by fatal and serious injury crashes when compared to white residents.

Illinois Department of Transportation (IDOT) crash data, 2018-2022.



The Vision Zero project is continuing into the summer of 2024 with upcoming engagement opportunities.

Check out the project website for more information about the Vision Zero action plan and events.

68%

of all **fatal and serious injury crashes** over the last five years were caused by...



failure to yield



disobeying traffic signals



failure to reduce speed

When involved in a traffic crash, fatality or severe injury is...

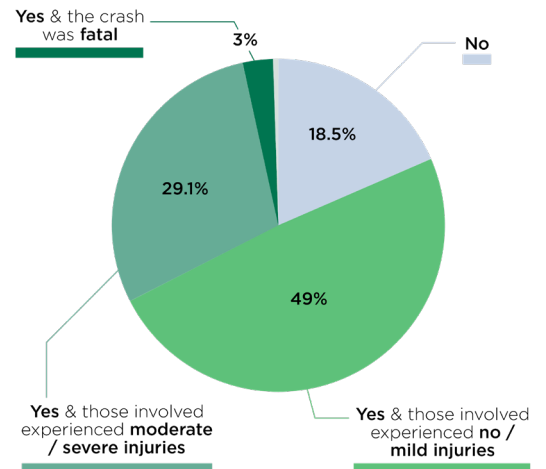
15x

more likely for **pedestrians**

12x

more likely for **cyclists**

RESIDENTS' EXPERIENCES WITH TRAFFIC CRASHES



Based on survey responses.